



COLLEGE OF BUSINESS
AND ECONOMICS

College of Business and Economics **Undergraduate Brochure**

Undergraduate Studies
Intake 2026

Work hard and unlock your potential and future!



Our Future. Reimagined.

Our Legacy: Building a Diverse and Inclusive Institution

Celebrating 20 Years of Excellence and Innovation

Born out of the integration of **Rand Afrikaans University (RAU)**, **Technikon Witwatersrand (TWR)**, and **portions of Vista University**, UJ was founded on the principles of inclusivity and transformation. This merger was a bold step in South African higher education, ensuring that students from all backgrounds could access quality education in an environment that values diversity and innovation.

Since its establishment in 2005, the University of Johannesburg (UJ) has stood as a symbol of progress, innovation, and transformation in the higher education landscape. Over the last two decades, UJ has redefined what it means to be a world-class African university, achieving milestones that have placed it at the forefront of academia, research, and community impact nationally and globally.

College of Business and Economics

Undergraduate Studies Intake 2026

Warm greetings from the College of Business and Economics, or fondly known as the CBE, at the University of Johannesburg. In a blink of an eye, the whole world changed from the fourth industrial revolution, or 4IR, and digital technology that influences many aspects of people's daily lives and functions to the snowballing of Artificial Intelligence, AI, from manufacturing robots, self-driving cars, smart assistants to automated financial investing and marketing chatbots, to name a few, are here to stay.

The University of Johannesburg, or UJ, is at the forefront of innovation and future learning. The College of Business and Economics is also excelling in the 4IR, AI creative and innovative game plan to educate a workforce that is fit for the future.

In doing so, we develop critical thinkers and problem solvers who address business, economic and societal challenges. This means that we seek ways to use technology and innovation to be better informed, healthier, safer, behave better, connect faster, learn and research, and develop leaders for the industry who believe in sustainability and merit the impact of behaviour on society and the environment. Our lecturers use creative and innovative digital teaching methods as well as real-world examples and case studies to prepare students for the world of work.

The CBE houses a wide variety of qualifications in an extensive range of business and economic education opportunities. These qualifications vary from extended diplomas and degrees, diplomas to BA and BCom Degrees followed by postgraduate qualifications after completion of your undergraduate studies.

Our programmes are offered over three campuses, namely: the Auckland Park Kingsway Campus – referred to in short as APK, Auckland Park Bunting Road Campus – or APB and the Soweto Campus –SWC.

We look forward to welcoming you to the CBE family.

CBE Purpose Statement

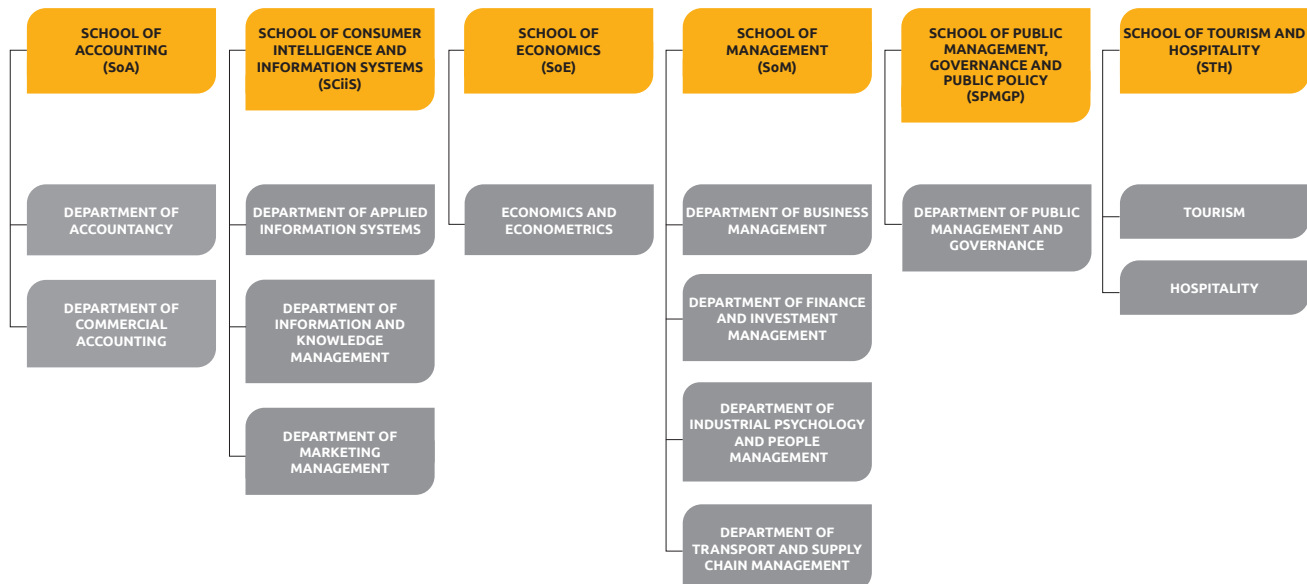
We develop critical thinkers and problem solvers who address business, economics and societal challenges.

CBE Goals

- To streamline teaching and learning excellence and improve student success.
- To increase people excellence through attracting, developing and promoting the right talents and people wellbeing.
- To increase research excellence in output, impact and NRF rated researchers.
- To achieve financial sustainability.
- To increase and improve sustainable relations, collaborations and partnerships.

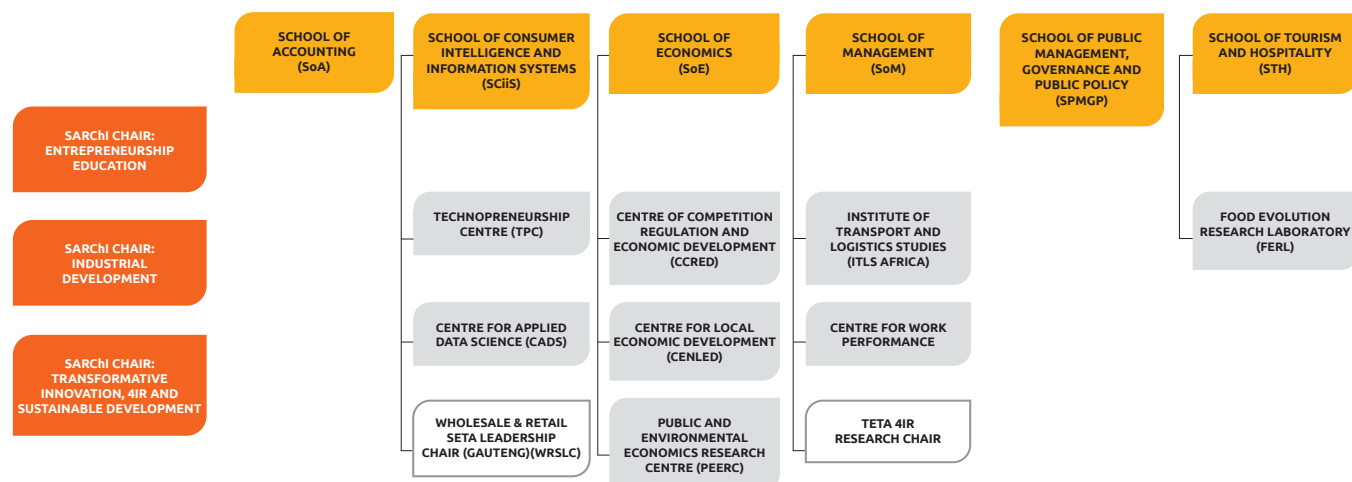
Academic Departments @ a Glance

6 Schools ➡ 10 Departments ➡ 3 Academic Entities



Research Hubs @ a Glance

➡ 3 SARChI Chairs ➡ 6 Schools ➡ 6 Research Centres ➡ 2 Research Chairs ➡ 1 Institute ➡ 1 Research Laboratory



The College of Business and Economics programmes are globally recognised. The College offers substantial and well-established programmes serving both the private and public sector, contributing to UJ's vision of promoting Pan-Africanism and societal impact. To be considered for selection for a programme, an applicant is required to comply with the programme's minimum admission criteria based on either the National Senior Certificate (NSC), the National Certificate (Vocational) (NC(V)), National Senior Certificate for Adults (NASCA) or Amended Senior Certificate (SC(a)).

Due to ongoing programme reviews and external approval of new programmes there may be changes in diploma and degree programmes in terms of range and mix of qualifications, curricula and admission requirements.

When applying to study at the COLLEGE OF BUSINESS AND ECONOMICS please keep the following IMPORTANT information in mind:

Applications

- All undergraduate programmes **applications close on Friday, 31 October 2025 @ 12:00.**
- Apply at www.uj.ac.za/apply and select online web application.
- Applicants may only apply for two study choices. These study choices may not be amended once they have been chosen.
- If you received a conditional selected letter, your matric results would determine your final admission into the UJ programme you have applied for.
- Only applicants applying for the 2026 academic year will be ranked in January based on their final grade 12 performance and based on the class space available.
- The right to add/withdraw or in any way change any part of any regulation without prior notification, remains vested in the University of Johannesburg.
- **Compliance with the minimum requirements does not guarantee the applicant a place** as the University has a specific number of places, as approved by the Department of Higher Education and Training, for new undergraduate first years.

Programmes

- All programmes are presented in English only.
- All the programmes require English grade 12.
- Many programmes only accept Mathematics grade 12.
- There are some programmes that accept either Mathematics or Mathematical Literacy grade 12.
- Technical Mathematics is equivalent to Mathematics.
- Life Orientation is **NOT** acknowledged and included in the calculation of the Admission Points Score (APS).
- The BCom (Accounting) degree (B34A5Q) and BCom (Accounting) Extended Degree (B34AEQ) does not provide direct access to the Postgraduate Diploma in Accounting Science. However, students who complete the BCom (Accounting) and BCom (Accounting) Extended programme, may apply for a bridging programme (subject to space, admission requirements and the continued future offering of this programme). Upon completion of this bridging programme and compliance with specific performance requirements, candidates may then apply for the Postgraduate Diploma in Accounting Science.
- Programmes within the CBE are presented at either the Auckland Park Bunting (APB), Auckland Park Kingsway (APK) or the Soweto Campuses (SWC).

For detailed information, please refer to the UJ Prospectus 2026 intake on www.uj.ac.za

NATIONAL & INTERNATIONAL APPLICANTS

How to determine your Admission Point Score (APS)

An Admission Point Score (APS), explained below, has been developed for the National Senior Certificate (NSC) and the Independent Examinations Board (IEB) based on the Achievement Rating of each subject. The total APS is the sum of the achievement ratings of the six school subjects. Life Orientation is not counted in the calculation of the total APS.

APS implementation rules

In order to determine the Admission Point Score (APS) the following principles are important:

- Applicants with the following results, WAEC, Diplome or Exam D'Etat, Certificado de Habilidades Literarias, Ensino Medio and Baccalaureat should be linked with the Ordinary Level (O) Grades on UJ's Student database.
- Applicants with the following results, HIGCSE, NSSC (HL), AS Level, IB (SL) and KCSE should be linked to the South African NSC (N) Grades on UJ's Student database.
- Applicants who have set for either A Level or IB (HL) should be linked to the (A) Grades on UJ's Student database.

	NATIONAL			INTERNATIONAL											
APS	NSC (IEB/SACA/ISC)	SC HG (M-SCORE)	SC SG (M-SCORE)	HIGCSE/NSSC (HL)	IGCSE/NSSC (OL)	AS LEVELS	A LEVELS	IB (HL)	IB (SL)	WAEC	KCSE	Diplome/ Exam D'Etat	CHL/EM	Bacca-laureate	AHSD
10							A/A*	7							
9							B	6							
8							C	5							
7	7 (80-100%)	A		1		A/A* (7)	D	4	7		A				A
6	6 (70-79%)	B	A	2		B (6)	E	3	6		B				B
5	5 (60-69%)	C	B	3	A/A* (9-7)	C (5)		2	5	A	C	80-100%	16-20	16-20	C
4	4 (50-59%)	D	C	4	B (6-5)	D (4)		1	4	B	D	70-79%	14-15	14-15	D
3	3 (40-49%)	E	D		C (4)	E (3)			3	C	E	50-69%	10-13	10-13	
2	2 (30-39%)	F	E		D/E (3)				2	D/E	F	30-49%	8-9	8-9	
1	1 (0-29%)	G	F		F/G (2-1)				1	F/G	G	0-29%	0-7	0-7	

ABBREVIATIONS

- NSC National Senior Certificate (completed Grade 12 in and after 2008)
- SC HG Senior Certificate Higher Grade (completed Grade 12 before 2008)
- SC SG Senior Certificate Standard Grade (completed Grade 12 before 2008)
- IEB Independent Examination Board
- ISC International Secondary Certificate
- SACAI South African Comprehensive Assessment Institute
- HIGCSE Higher International General Certificate of Secondary Education
- IGCSE International General Certificate of Secondary Education
- NSSC(HL) Namibia Senior Secondary Certificate (Higher Level)
- NSSC(OL) Namibia Senior Secondary Certificate (Ordinary Level – Cambridge)
- AS Advanced Subsidiary Level (Cambridge)
- A Level Advanced Level (Cambridge)
- IB(HL) International Baccalaureate Schools (Higher Levels)
- IB(SL) International Baccalaureate Schools (Standard Levels)
- WAEC West African Examination Council
- KCSE Kenya Certificate of Secondary Education
- Diplome/Exam D'Etat Diplôme/Examen d'Etat Diplôme d'Etat or/ou d'études du cycle secondaire
- CHL/EM Certificado de Habilidades Literarias (Mozambique) / Ensino Medio (Angola)
- Baccalaureate Gabonese School Leaving
- AHSD American High School Diploma

Points are awarded for the six symbols on your Grade 11 or Grade 12 report. See example below.

School Subjects	Marks	APS
First language (language of teaching and learning)	65%	5
Additional recognised language	71%	6
Mathematics or Mathematical Literacy	61%	5
Accounting	68%	5
History	81%	7
Geography	86%	7
Total		35

** Life Orientation is not counted in the calculation of the total APS

ADMISSION REQUIREMENTS

Admission requirements for candidates with National Senior Certificates (NSC)

DEGREE PROGRAMMES

PROGRAMME	Qualification Code	Minimum APS	English	Mathematics	Mathematical Literacy	Technical Mathematics	CAREER	CAMPUS
Bachelor Degrees (3 years)								
ACCOUNTING (CA)	B34CAQ	33	4 (50%+)	5 (60%+)	Not accepted	Not accepted	Chartered Accountant – CA (SA).	APK
HOSPITALITY MANAGEMENT	B34HNQ	26 with Maths/Tech Maths OR 28 with Mathematical Literacy	5 (60%+)	4 (50%+)	5 (60%+)	4 (50%+)	This degree serves the needs of students who aspire to move into leadership positions in the Hospitality Industry i.e. General Manager, Financial Manager amongst other positions in the industry.	APB
HUMAN RESOURCE MANAGEMENT	B34HRQ	28 with Maths/Tech Maths OR 28 with Mathematical Literacy	4 (50%+)	4 (50%+)	5 (60%+)	4 (50%+)	Human Resource Practitioners, HRM Personnel Manager, HRM Personnel Officer, Training Manager, Recruitment and Selection Officer. Graduates may register as HR Practitioners with the South African Board of People Practices (SABPP) to encourage regulated, standardised HR practices.	APK
TOURISM DEVELOPMENT AND MANAGEMENT	B34TDQ	26 with Maths/Tech Maths OR 28 with Mathematical Literacy	5 (60%+)	3 (40%+)	4 (50%+)	3 (40%+)	Entrepreneur, Travel Agent, Tour Guide, Tour Operator, Event and Conference Organiser, Public Relations, Marketing, Leisure Activity Co-ordinator, Visa Consultant, Researcher, Academia, Teaching, Training and Lecturing, Transportation, Car Rental Agent, Development Consultant, Corporate Consulting, National, Provincial and Local Government Tourism Departments and Agencies, Technical Writer and Editor, Website Developer and Manager, Travel Blogger, Sales Co-ordinator and Manager.	APB
Bachelor of Art Degree (3 years)								
PUBLIC MANAGEMENT AND GOVERNANCE	B34PKQ / B34PSQ	26 with Maths/Tech Maths OR 28 with Mathematical Literacy	5 (60%+)	3 (40%+)	5 (60%+)	3 (40%+)	Public Managers in State Departments, Provincial Departments and Municipalities, Public, Private and NGO Sector, Administrative and Managerial Positions.	APK / SWC

PROGRAMME	Qualification Code	Minimum APS	English	Mathematics	Mathematical Literacy	Technical Mathematics	CAREER	CAMPUS
Bachelor of Commerce Degree (3 years)								
ACCOUNTING	B34A5Q	28	4 (50%+)	4 (50%+)	Not Acc	Not acc	Financial Manager, Accountant, Internal Auditor, Tax Consultant.	APK
BUSINESS MANAGEMENT	B34BMQ	26	4 (50%+)	4 (50%+)	Not accepted	4 (50%+)	Training Manager, HRD Manager, Employment Relations Manager, Product Development Manager, Branch Manager, General Manager, Change Facilitator, Management Consultant, Entrepreneur, Business Innovator.	SWC
ECONOMICS AND ECONOMETRICS	B3N14Q	28	4 (50%+)	4 (50%+)	Not accepted	Not accepted	Economist, Econometrician, Economic Analyst, Forecaster, Economic Planner.	APK
ENTREPRENEURIAL MANAGEMENT	B1CEMQ	26	4 (50%+)	4 (50%+)	Not accepted	4 (50%+)	Business Owner, Marketing Manager, Manager, Consultant, Business Manager, Financial Manager.	APK
FINANCE	B34F5Q	28	4 (50%+)	4 (50%+)	Not accepted	Not accepted	Financial Manager, Stockbroker, Accountant, Financial Consultant, Investment Advisor.	APK
INDUSTRIAL PSYCHOLOGY	B34IPQ	26	4 (50%+)	4 (50%+)	Not accepted	4 (50%+)	Specialist HR Practitioners dealing with the problems or challenges arising from employees' relationship within the work environment.	APK
INFORMATION MANAGEMENT	B34IMQ	26 with Maths/Tech Maths OR 28 with Mathematical Literacy	4 (50%+)	4 (50%+)	6 (70%+)	4 (50%+)	Information Manager, Knowledge Manager, Researcher, Competitive Intelligence Officer, Records Manager.	APK
INFORMATION SYSTEMS	B1CISQ	26	4 (50%+)	4 (50%+)	Not accepted	4 (50%+)	IT Project Manager, Business Analyst, IT Manager, Business Intelligence Expert, Chief Information Officer, Database Administrator, Systems Analyst, IT Consultant.	APB
MARKETING MANAGEMENT	B1CMMQ	26	4 (50%+)	4 (50%+)	Not accepted	4 (50%+)	Advertising Manager, Brand Manager, Customer Relationship Manager, Marketing Manager, Marketing Researcher, Customer Services Manager, Marketing Consultant, Media Planner, Sales Manager.	APK
TRANSPORT AND LOGISTICS MANAGEMENT	B34TLQ	27	5 (60%+)	4 (50%+)	Not accepted	4 (50%+)	Logistics Manager, Consultant, Production Manager.	APK

NOTES:

- The achievement level (rating) obtained for Life Orientation is NOT included in the calculation of the Admission Points Score (APS).
- All degrees are presented in English only.
- The Bachelor of Commerce in Accounting degree programme (B34A5Q) does not provide direct access to the Postgraduate Diploma in Accounting Science. However, students who complete the Bachelor of Commerce in Accounting degree may apply for a bridging programme (subject to space, admission requirements and the continued future offering of this programme). Upon completion of this bridging programme and compliance with specific performance requirements, candidates may then apply for the Postgraduate Diploma in Accounting Science.

Admission requirements for candidates with National Senior Certificate (NSC)

EXTENDED DEGREE PROGRAMMES

Bachelor of Commerce Extended Degree (4 years)

PROGRAMME	Qualification Code	Minimum APS	English	Mathematics	Mathematical Literacy	Technical Mathematics	CAREER	CAMPUS
ACCOUNTING	B34AEQ	25 with Maths/Tech Maths OR 28 with Mathematical Literacy	4 (50%+)	3 (40%+)	6 (70%+)	Not accepted	Financial Manager, Accountant, Internal Auditor, Tax Consultant.	APK
BUSINESS MANAGEMENT	B34BEQ	25 with Maths/Tech Maths OR 28 with Mathematical Literacy	4 (50%+)	3 (40%+)	6 (70%+)	3 (40%+)	Management opportunities in various industries on first and/or middle management level, Training Manager, HRD Manager, Employment Relations Manager, Product Development Manager, Branch Manager, General Manager, Change Facilitator, Management Consultant, Entrepreneur, Business Innovator.	APK
ECONOMICS AND ECONOMETRICS	B3NE4Q	25 with Maths/Tech Maths OR 28h Mathematical Literacy	4 (50%+)	3 (40%+)	5 (70%+)	Not accepted	Economist, Econometrician, Economic Analyst, Forecaster, Economic Planner	APK
FINANCE	B34FEQ	25 with Maths/Tech Maths OR 28 with Mathematical Literacy	4 (50%+)	3 (40%+)	6 (70%+)	Not accepted	Financial Manager, Stockbroker, Accountant, Financial Consultant, Investment Advisor.	APK

NOTES:

- The achievement level (rating) obtained for Life Orientation is NOT included in the calculation of the Admission Points Score (APS).
- All extended degrees are presented in English only.
- Only new first time entering candidates are considered for admission into BCom extended degree programmes.
- This means that those who previously enrolled at a Higher Education Institution, do not qualify.
- The Bachelor of Commerce in Accounting Extended Degree (B34AEQ) programme does not provide direct access to the Postgraduate Diploma in Accounting Science. However, students who complete the Bachelor of Commerce in Accounting Extended Degree, may apply for a bridging programme (subject to space, admission requirements and the continued future offering of this programme). Upon completion of this bridging programme and compliance with specific performance requirements, candidates may then apply for the Postgraduate Diploma in Accounting Science.

DIPLOMA PROGRAMMES

Diplomas (3 years)

PROGRAMME	Qualification Code	Minimum APS	English	Mathematics	Mathematical Literacy	Technical Mathematics	CAREER	CAMPUS
ACCOUNTANCY *	D3A15Q	22 with Maths/Tech Maths OR 24 with Mathematical Literacy	4 (50%+)	3 (40%+)	5 (60%+)	3 (40%+)	Accounting Technician, Bookkeeper, Cost Accountant.	SWC
BUSINESS INFORMATION TECHNOLOGY	D11401	22 with Maths/Tech Maths OR 24 with Mathematical Literacy	4 (50%+)	3 (40%+)	6 (70%+)	3 (40%+)	IT practitioners provide solutions to business problems through the application of computer-based technology and techniques.	APB
FINANCIAL SERVICES OPERATIONS *	D34F9Q	22 with Maths/Tech Maths OR 24 with Mathematical Literacy	4 (50%+)	3 (40%+)	5 (60%+)	3 (40%+)	Middle and Back Office Operations: Financial Operations Administrator, Operations Analyst, Risk and Compliance Officer.	SWC
FOOD AND BEVERAGE OPERATIONS	D34FBQ	22 with Maths/Tech Maths OR 24 with Mathematical Literacy	4 (50%+)	3 (40%+)	5 (60%+)	3 (40%+)	The successful food and beverage operations student will possess the appropriate skills at operational and supervisory levels within the food and beverage industry in South Africa or internationally. People can work in food and beverage units, private and executive catering, marketing and promotions, training or in areas of food and drinks within the industry.	APB
LOGISTICS	D34LGQ	24 with Maths/Tech Maths OR 26 with Mathematical Literacy	4 (50%+)	3 (40%+)	5 (60%+)	3 (40%+)	Purchasing Manager, Warehouse Manager.	APB
MARKETING **	D34MKQ	22 with Maths/Tech Maths OR 24 with Maths Lit	4 (50%+)	3 (40%+)	5 (60%+)	3 (40%+)	Advertising, Brand Management, Customer Relationship Manager, Marketing Manager, Marketing Researcher, Customer Services, Marketing Consulting, Media Planner and Sales Manager.	APB
PEOPLE MANAGEMENT	D34P2Q	22 with Maths/Tech Maths OR 24 with Maths Lit	4 (50%+)	3 (40%+)	5 (60%+)	3 (40%+)	People Management Practitioners dealing with employee-related issues in Organisations. Human Resource Officer, Employee Benefits Officer, Health and Wellness Official, Recruitment and Selection Official, Human Resource Researcher, Training and Development Officer, Change Facilitator, Organisational Development Practitioner.	SWC

NOTES for 3-year diplomas

- The achievement level (rating) obtained for Life Orientation is NOT included in the calculation of the Admission Points Score (APS).
- All diplomas are presented in English only.
 - A student in the College of Business and Economics who has diploma endorsement but does not meet the specific diploma entry requirements may obtain access to diploma studies in Accountancy or Financial Services Operations through the Programme in Commercial Accounting and must complete all prescribed modules of the latter programme within the first year of registration.
 - A student in the College of Business and Economics who has the Higher Certificate endorsement and has completed the Higher Certificate in Marketing and Sales with UJ's Department of Marketing Management, may gain access to the diploma in Marketing or Retail Business Management if they:
 - have completed the Higher Certificate in Marketing and Sales within the first year of registration.
 - obtained a minimum mark of 60% for each of the following modules: English 1A, English 1B,
 - Mathematics for Marketers 1A and Mathematics for Marketers 1B. Additional department selection criteria will apply.
 - Alternatively, a student who has completed the Short Learning Programmes (SLPs) Retail Management (S3M01Q) or Introduction to Retail Management (MKT010) may also gain access to the Diploma in Retail Business Management.

*** It is recommended that applicants to the Small Business Management qualification show a desire to start their own business and to become an entrepreneur.

PROGRAMME	Qualification Code	Minimum APS	English	Mathematics	Mathematical Literacy	Technical Mathematics	CAREER	CAMPUS
RETAIL BUSINESS MANAGEMENT**	D34RMQ	22 with Maths/Tech Maths OR 24 with Mathematical Literacy	4 (50%+)	3 (40%+)	5 (60%+)	3 (40%+)	Prepares the graduate for work in the retailing industry. Buyers, Store Managers, Layout Specialists, Visual Merchandisers, Product Category Managers, Sales Managers, Service Retailing, Advertising and Sales Promotion, Customer Experience Leaders, Customer Analytics, Retail Software Developers, Business Owner	APB
SMALL BUSINESS MANAGEMNT	D34SBQ	22 with Maths/Tech Maths OR 24 with Mathematical Literacy	4 (50%+)	3 (40%+)	5 (60%+)	3 (40%+)	Entrepreneur, Business Owner, Business Advisor, Business Manager, Social Entrepreneur. It is recommended that applicants to this qualification show a desire to start their own business.	SWC
TOURISM MANAGEMENT	D34TMQ	22 with Maths/Tech Maths OR 24 with Mathematical Literacy	4 (50%+)	3 (40%+)	5 (60%+)	3 (40%+)	Prepares the graduate with operational and managerial aspects to work in a variety of different tourism related sectors.	SWC
TRANSPORTATION MANAGEMENT	D34TRQ	24 with Maths/Tech Maths OR 26 with Mathematical Literacy	4 (50%+)	3 (40%+)	5 (60%+)	3 (40%+)	Transportation Manager	APB

EXTENDED DIPLOMA PROGRAMMES

Extended Diploma (4 Years)

PROGRAMME	Qualification Code	Minimum APS	English	Mathematics	Mathematical Literacy	Technical Mathematics	CAREER	CAMPUS
LOGISTICS	D34LEQ	22 with Maths/Tech Maths OR 24 with Mathematical Literacy	4 (50%+)	3 (40%+)	5 (60%+)	3 (40%+)	Purchasing Manager, Warehouse Manager	APB
PEOPLE MANAGEMENT	D34PEQ	19 with Maths/Tech Maths OR 21 with Mathematical Literacy	4 (50%+)	3 (40%+)	4 (50%+)	3 (40%+)	People Management Practitioners deal with employee-related issues in organisations. Human Resource Officer, Employee Benefits Officer, Health and Wellness Official, Recruitment and Selection Official, Human Resource Researcher, Training and Development Officer, Change Facilitator, Organisational Development Practitioner.	SWC
SMALL BUSINESS MANAGEMENT	D34SEQ	19 with Maths/Tech Maths OR 21 with Mathematical Literacy	4 (50%+)	3 (40%+)	4 (50%+)	3 (40%+)	Entrepreneur, Business Owner, Business Advisor, Business Manager, Social Entrepreneur. <i>It is recommended that applicants to this qualification show a desire to start their own business.</i>	SWC
TRANSPORTATION MANAGEMENT	D34TEQ	22 with Maths/Tech Maths OR 24 with Mathematical Literacy	4 (50%+)	3 (40%+)	5 (60%+)	3 (40%+)	Transportation Manager	APB

NOTES

- The achievement level (rating) obtained for Life Orientation is NOT included in the calculation of the Admission Points Score (APS).
- All extended diplomas are presented in English only.
- Only first time (new) entering candidates are considered for admission into the extended diploma programmes.
- This means that those who were previously enrolled at a Higher Education Institution do not qualify.

ONLINE PROGRAMMES

PROGRAMME	Qualification Code	Minimum APS	English	Mathematics	Mathematical Literacy	Technical Mathematics	CAREER	CAMPUS
BACHELOR OF COMMERCE IN ACCOUNTANCY	B34ACP	28 with Mathematics	4 (50%+)	5 (50%+)	Not accepted	Not accepted	Financial Manager, Accountant, Internal Auditor, Tax Consultant.	Online
BACHELOR OF HUMAN RESOURCE MANAGEMENT	B34HRP	28 with Maths/Tech Maths OR 28 with Mathematical Literacy	4 (50%+)	4 (50%+)	5 (60%+)	5 (50%+)	HRM Personnel Manager, HRM Personnel Officer, Training Manager, Recruitment and Selection Officer.	Online

BURSARIES

Merit Bursaries

Academic merit bursaries are awarded annually on the grounds of exceptional academic achievement. This is determined according to marks obtained in the six best subjects (excluding LO) on your senior certificate. Your final senior certificate will determine your first-year bursary. Bursaries for second- and third-year studies will be awarded according to the average obtained in the June and December University examinations.

Orange Carpet

The Orange Carpet rewards programme is a UJ initiative to further recognise top achievers. The objective of the campaign is to allow top-performing learners early conditional admission to the University as well as special benefits. To qualify for these benefits, a learner must obtain at least an Admission Point Score (APS) of 37 and above with a Level 6 or higher in all subjects in either their final Grade 11 or final Grade 12 results. Meet the specific subject requirements for the programme you are interested in and obtain a 70% and above in all relevant subjects. Final acceptance, for applicants' condition-ally admitted based on their final Grade 11 results, will be dependent on the learner maintaining these results in their final Grade 12 results.

Final admission to the Orange Carpet initiative for applicants writing final Grade 12 Other than the NSC or IEB, will be based on the discretion of the relevant faculty. This initiative begins in February and closes with all undergraduate programmes on 30 September. Submit your application without delay or call Student Marketing for any enquiries: 011 559 6680

APS (Admission Point Score)	Bursary Value
37-39	50%
40-41	75%
42	100%
Higher than 40	100% + R5485

*Please note:

Bursary values are based on a specific curriculum's tuition fees. Orange Carpet admitted status is allocated to a top achiever applicant who has a total APS of 37 calculated as follows:

- Exclude life Orientation
- Achieve a minimum of 70% in the six best subjects.
- Subjects used to calculate the total APS must include the required programme subjects.

Only prospective students who are entering for their first undergraduate studies are eligible for the Orange Carpet initiative. Prospective students who have already undertaken studies at UJ or elsewhere are not eligible for this initiative.

UJ Jenius Club

After first year registration, Orange Carpet members will become UJenius club members. To join or to keep UJenius Club membership for the 2nd, 3rd and final year of your undergraduate study, students need to have achieved a year average of 75% in the preceding year, on a full course load, and with no module below 70%. UJenius club members will qualify for the following benefits:

- A UJenius Merit bursary.
- Library privileges that are the same as those for postgraduate students.
- Exclusive invitation to prestigious events.
- Students with a consistent UJenius Club membership for a period of three years will be given preference for 'study abroad' programmes.

Leadership Bursary

The President, Vice-President, Secretary or Treasurer of a secondary school body who enrolls at the University will receive a bursary of R1 650.

Culture and Sport Bursaries

The University offers many cultural activities and sport opportunities, as well as a large number of bursaries in these fields. Sport bursaries are awarded for achievement at provincial or a higher level. Applications for sports bursaries must be submitted on the prescribed bursary application form obtainable from the Sports Bureau. Closing date for applications is 30 September. Cultural Bursaries are awarded to members of the UJ Arts & Culture groups.

Enquiries: Culture bursaries: 011 559 2034 or

Enquiries: Sport bursaries: 011 559 2252

DHET Loans and NSFAS Bursaries

Study grants vary according to family income and cover the actual costs of studies for accepted undergraduate students. Applicant for NSFAS must be done on the NSFAS website www.nsfas.org.za. Please check website for the closing date.

Enquiries:

Auckland Park Bunting Road Campus
011 559 1193 / 1250 / 1173 / 1594

Auckland Park Kingsway Campus
011 559 3642 / 3906 / 4035 / 3768 / 3575

Doornfontein Campus
011 559 6195 / 6412 / 6063

Soweto Campus
011 559 5507 / 5508
Email: nsfas@uj.ac.za

Edu-loan

Study loans are available to registered students.

Enquiries: Edu-loan Customer Services 086 055 5544

INTERNATIONAL STUDENTS

Admission for all applicants is subject to the faculty qualifications admission point score requirements. Registration of admitted international applicants is subject to compliance requirements as stipulated by the Immigration Act No.13 of 2002, the regulations made thereunder and the University's policy.

Application

Application documentation for international applicants:

- Final Grade 11 results, if currently in Grade 12 and pursuing a South African NSC or IEB curriculum, or
- Final School Leaving results
- Valid Passport or Asylum Seeker Permit or Refugee Permit or National Identity Document or Permanent Residence Certificate or ID.

To enrol for a degree programme in South Africa, applicants with international school leaving results are required to qualify for any type of Matriculation Exemption from the Matriculation Board (USAF) for admission into undergraduate degree studies.

For further information on the application process for Matriculation Exemption visit the website www.mb.usaf.ac.za.

Degree seeking applicants with the American High School Diploma are required to submit their SAT statement with Reading and Writing at a score of 610 and Mathematics at a score of 530 or a letter of admission from a recognised American university as part of their application for Matriculation Exemption.

English Proficiency Requirement

Prospective students are required to provide proof of English Proficiency where English was not used as a medium of instruction, learning or teaching. The University accepts appropriate proof of English proficiency certificates from: IELTS, TOEFL, and UJELP. Only the following will be accepted: UJELP and IELTS at an overall score of 6 and TOEFL at an average score of 80 -104 for undergraduate programmes. Alternatively, you may elect to write the University of Johannesburg English Language Programme Test (UJELP). Should you choose to write the University of Johannesburg English Language Programme Test (UJELP), contact +27 (0)11559 4265/2127 or tebogoso@uj.ac.za or UJGlobal@uj.ac.za or ujelp1@uj.ac.za.

Compulsory Study Visa

All accepted international applicants (passport holders) are required by law, upon receipt of their admission or acceptance letter, to immediately apply for a study visa in line with the Immigration Act No. 13 of 2002, Immigration Regulations. For more information please contact the University of Johannesburg, Division for Global Engagement or visit the Republic of South Africa Embassy, Consulate or Mission in your home country or visit the Republic of South Africa Department of Home Affairs website www.dha.gov.za.

University fees

All accepted international applicants who are privately or self-funded are required to pay their fees prior to or during registration as follows:

TUITION AND UJ RESIDENCE FEES

(ON CAMPUS RESIDENCE)

- An upfront payment of 40% of tuition and campus residence fees must be paid before or at registration.
- 30% of the tuition and campus residence fees must be paid by 30 April.
- 30% of the tuition and campus residence fees must be paid by 31 July.
- All sponsored (Government, Organisation or Company) international students must provide a letter confirming the sponsorship.
- Asylum Seekers, Diplomatic, Permanent and Refugee permit holders are exempted from paying an international levy.

International Levy 2026

Please note that the international levy is non-refundable and expires on 31 December of the year of registration. The international levy for the year 2026 will be published prior to registration.

How to pay

Payments to the University can be made in the form of a foreign bank payment or electronic transfer into the following account:

University of Johannesburg
FNB UJ Main Account
Account type: Cheque
Account number: 626 158 73280
Branch name: FNB Client Services
Branch code: 210-554
Swift code: FIRNZ AJJ

2025 UNDERGRADUATE STUDIES International applicants making payments at First National Bank (FNB) in South Africa should make use of the following banking details:

FNB UJ Main Account
Account type: Cheque
Account number: 626 158 73280
Branch name: FNB Client Services
Branch code: 210-554

All applicants must use their passport number as a reference. Applicants must provide the University with proof of payment from the bank where the transfer was made.

The UJ English Language Programme*

*UJELP is a Short Learning Programme for international students at the University of Johannesburg. It offers a platform for students to learn and practise the English language, as well as the academic, social and behavioural skills appropriate for academia.

Placement Tests (PT)

Students registering for UJELP must complete a Placement Test focusing on their competence in Grammar and Vocabulary, Listening, Writing and Oral presentation.

This Placement Test may be completed outside of South Africa – Phase 1 (online) or at UJ Phase 2 (on-site), to enable students to obtain their English proficiency results before registration or for visa application purposes (outside of South Africa).

By using the proficiency levels of the Common European Framework of Reference (CEFR) for languages, students are placed in the following groups: Elementary (A1 and A2), Intermediate (B1 and B2), and Advanced (C1 and C2). Should you choose to write the UJELP placement test, please contact +27 (0)11559 2127 or ujelp1@uj.ac.za for further information on payment of fees and mode of offering.

ADMISSIONS OFFICERS:

INTERNATIONAL STUDENTS

Auckland Park Kingsway Campus (APK)

Mr. Bennett Dintsi
International Admissions Officer
Tel no: +27 (0)11 559 2096
bennettd@uj.ac.za

Doornfontein Campus (DFC)

Mr. Thabang Mothebe
International Admissions Officer
Tel no: +27 (0)11 559 6510
thabangm@uj.ac.za

Auckland Park Bunting Road Campus (APB) and Soweto Campus (SWC)

Ms. Palesa Makwela
International Admissions Officer
Tel no: +27 (0)11 559 1027 or
+27 (0)11 559 5014
pmakwela@uj.ac.za

International Student Welfare and Academic Liaison Officer

Ms Shantelle Sass
Tel no: +27 (0)11 559 7780
ssass@uj.ac.za

Physical Address

University of Johannesburg
International House
Madibeng Building
Corner of Kingsway and University Road
Auckland Park
Johannesburg
South Africa

For more information visit www.uj.ac.za or the Division for Global Engagement home page: <https://www.uj.ac.za/about/global-engagement/>

CBE GENERAL ENQUIRIES

Your First Point of Contact:

AUCKLAND PARK KINGSWAY CAMPUS

Mrs Lou Nuku
Tel: 011 559 2492/3861/2475
Email: AskCBE@uj.ac.za or lnuku@uj.ac.za

Auckland Park Bunting Road Campus

Mr Mxolisi Msuthu
Tel: 011 559 1244/1348
Email: mxolisimaxwellm@uj.ac.za

Soweto Campus

Ms Otsile Sekwati
Tel: 011 559 5559
Email: otsiles@uj.ac.za

Ms Matebogo Khesuoe
Tel: 011 559 5709
Email: matebogom@uj.ac.za

CBE Website:

<http://www.uj.ac.za/cbe> I also want to include CBE social media pages, please let me know what you think.