



UNIVERSITY
OF
JOHANNESBURG

CBE
COLLEGE OF
BUSINESS AND ECONOMICS

College of Business and Economics UNDERGRADUATE STUDIES **2025 intake**

**The Future
Reimagined**

College of Business and Economics

UNDERGRADUATE STUDIES

2025 Intake

Warm greetings from the College of Business and Economics, in short CBE, at the University of Johannesburg.

In a blink of an eye, the whole world changed from the fourth industrial revolution, or 4IR, and digital technology that influences many aspects of people's daily lives and functions to the snowballing of Artificial Intelligence, AI, from manufacturing robots, self-driving cars, smart assistants to automated financial investing and marketing chatbots, to name a few, are here to stay.

The University of Johannesburg, or UJ, is at the forefront of these developments and future learning. The College of Business and Economics is also on top of the 4IR creative and innovative game plan to educate a workforce that is fit for the future.

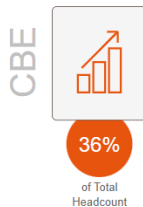
In doing so, we develop critical thinkers and problem solvers who address business, economic and societal challenges. This means that we seek ways to use technology to be better informed, to be healthier, to be safer, to behave better, to connect faster and to learn and educate more people than ever before.

Our lecturers use creative and innovative digital teaching methods as well as real-world examples and case studies to prepare students for the 21st century.

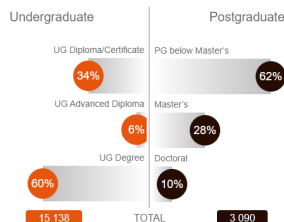
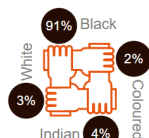
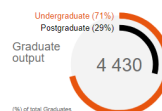
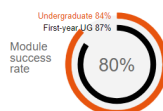
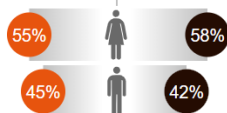
The CBE houses a wide variety of qualifications in an extensive range of commerce and economic education opportunities. These qualifications range from extended diplomas and degrees, diplomas to BA and BCom Degrees and then postgraduate qualifications after completion of your undergraduate studies.

Our programmes are offered over three campuses, namely: the Auckland Park Kingsway Campus – referred to in short as APK, Auckland Park Bunting Road Campus – or APB and the Soweto Campus –SWC.

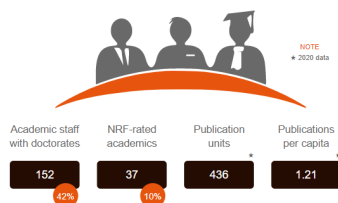
We look forward to welcoming you to the CBE family in 2025.



Undergraduate | Postgraduate



RESEARCH Indicators



The College offers substantial and well-established programmes serving both the private and public sector, contributing to UJ's vision of promoting Pan-Africanism and societal impact. In order to be considered for selection for a programme, an applicant is required to comply with the programme's minimum admission criteria based on either the National Senior Certificate (NSC), the National Certificate (Vocational) (NC(V)), National Senior Certificate for Adults (NASCA) or Amended Senior Certificate (SC(a)).

Due to ongoing programme reviews and external approval of new programmes there may be changes in diploma and degree programmes in terms of range and mix of qualifications, curricula and admission requirements.

When applying to study at the COLLEGE OF BUSINESS AND ECONOMICS please keep the following IMPORTANT information in mind:

- All programmes are presented in English only;
- All the programmes require English as a grade 12 subject;
- There are some programmes that only accept Mathematics as a grade 12 subject;
- There are some programmes where either Mathematics or Mathematical Literacy are accepted as a grade 12 subject;
- Technical Mathematics is equivalent to Mathematics;
- Life Orientation is NOT included in the calculation of the Admission Points Score (APS);
- Compliance with the minimum requirements does not guarantee the applicant a place as the University has a specific number of places, as approved by the Department of Higher Education and Training, for new undergraduate first years;
- All undergraduate programmes applications close on **Thursday, 31 October 2024 @ 12:00;**
- Apply at www.uj.ac.za/apply and select online web application;
- Applicants may only apply for two study choices. These study choices may not be amended once they have been chosen;
- If you received a conditional selected letter, your matric results will determine your final admission into the programme you have applied for;
- Only applicants applying for the 2025 academic year will be ranked in January based on their final grade 12 performance and based on the class space available;
- The right to add/withdraw or in any way change any part of any regulation without prior notification, remains vested in the University of Johannesburg;
- The BCom (Accounting) degree programme (B3A17Q) does not provide direct access to the Postgraduate Diploma in Accounting Science. However, students who complete the BCom (Accounting) degree, may enrol for a bridging programme (subject to space, admission requirements and the continued future offering of this programme). Upon completion of this bridging programme and compliance with specific performance requirements, candidates may then apply for the Postgraduate Diploma in Accounting Science;
- Programmes within the CBE are presented at either the Auckland Park Bunting, Auckland Park Kingsway or the Soweto Campuses.

For detailed information, please refer to the UJ Prospectus on www.uj.ac.za

NATIONAL & INTERNATIONAL APPLICANTS

How to determine your Admission Point Score (APS)

An Admission Point Score (APS), explained below, has been developed for the National Senior Certificate (NSC) and the Independent Examinations Board (IEB) based on the Achievement Rating of each subject. The total APS is the sum of the achievement ratings of the six school subjects. Life Orientation is not counted in the calculation of the total APS.

Rules to be implemented with this development.

In order to determine the Admission Point Score (APS) the following principles need to be taken into consideration:

- Applicants with the following results, WAEC, Diplome or Exam D'Etat, Certificado de Habilidades Literarias, Ensino Medio and Baccalaureat should be linked with the Ordinary Level (O) Grades on UJ's Student database.
- Applicants with the following results, HIGCSE, NSSC (HL), AS Level, IB (SL) and KCSE should be linked to the South African NSC (N) Grades on UJ's Student database.
- Applicants who have set for either A Level or IB (HL) should be linked to the (A) Grades on UJ's Student database.

	NATIONAL			INTERNATIONAL											
APS	NSC (IEB/SACAI /ISC)	SC HG (M-SCORE)	SC SG (M-SCORE)	HIGCSE/ NSC (HL)	IGCSE/ NSSC (OL)	AS LEVELS	A LEVELS	IB (HL)	IB (SL)	WAEC	KCSE	Diplome/ Exam D'Etat	CHL/EM	Bacca- laureate	AHSD
10							A/A*	7							
9							B	6							
8							C	5							
7	7 (80-100%)	A		1		A/A* (7)	D	4	7		A				A
6	6 (70-79%)	B	A	2		B (6)	E	3	6		B				B
5	5 (60-69%)	C	B	3	A/A* (9-7)	C (5)		2	5	A	C	80-100%	16-20	16-20	C
4	4 (50-59%)	D	C	4	B (6-5)	D (4)		1	4	B	D	70-79%	14-15	14-15	D
3	3 (40-49%)	E	D		C (4)	E (3)			3	C	E	50-69%	10-13	10-13	
2	2 (30-39%)	F	E		D/E (3)				2	D/E	F	30-49%	8-9	8-9	
1	1 (0-29%)	G	F		F/G (2-1)				1	F/G	G	0-29%	0-7	0-7	

ABBREVIATIONS

NSC	National Senior Certificate (completed Grade 12 in and after 2008)
SC HG	Senior Certificate Higher Grade (completed Grade 12 before 2008)
SC SG	Senior Certificate Standard Grade (completed Grade 12 before 2008)
IEB	Independent Examination Board
ISC	International Secondary Certificate
SACAI	South African Comprehensive Assessment Institute
HIGCSE	Higher International General Certificate of Secondary Education
IGCSE	International General Certificate of Secondary Education
NSSC(HL)	Namibia Senior Secondary Certificate (Higher Level)
NSSC(OL)	Namibia Senior Secondary Certificate (Ordinary Level – Cambridge)
AS	Advanced Subsidiary Level (Cambridge)
A Level	Advanced Level (Cambridge)
IB(HL)	International Baccalaureate Schools (Higher Levels)
IB(SL)	International Baccalaureate Schools (Standard Levels)
WAEC	West African Examination Council
KCSE	Kenya Certificate of Secondary Education
Diplome/Exam D'Etat	Diplôme/Examen d'Etat Diplôme d'Etat or/ou d'études du cycle secondaire
CHL/EM	Certificado de Habilidades Literarias (Mozambique) / Ensino Medio (Angola)
Baccalaureate	Gabonese School Leaving
AHSD	American High School Diploma

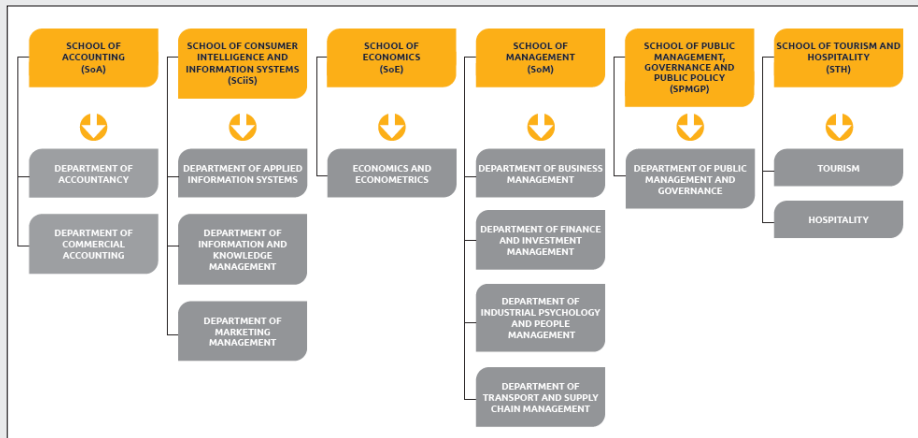
Points are awarded for the six symbols on your Grade 11 or Grade 12 report. See example below.

School Subject	Marks	APS
First language (language of teaching and learning)	65%	5
Additional recognised language	71%	6
Mathematics or Mathematical Literacy	61%	5
Accounting	68%	5
History	81%	7
Geography	86%	7
Total		35

** Life orientation is not counted in the calculation of the total APS.

CBE GLOBAL RECOGNITION

The College of Business and Economics houses six schools, thirteen departments:



Also housed in the CBE are six research centres, one institute, one research lab and three SARCHI Chairs.

The CBE has evolved into a preferred commerce education provider that has achieved global recognition for:

Shanghai Ranking

- **World Rankings:** 501-600 in the world / 5th in South Africa and 6th in Africa
- **Global Ranking of Academic Subjects (GRAS):**

Hospitality & Tourism Management: 6th in the world, 1st in South Africa and Africa

Business Administration: Top 300 in the world, 2nd in South Africa and Africa

Management: Top 300 in the world, 1st and only one ranked in South Africa and 1st in Africa

Economics: Top 400 in the world, joint 2nd in South Africa and Africa

Quacquarelli Symonds (QS)

- **World Rankings:** 306 in the world, in the Top 1% / 4th in South Africa and Africa
- **Subject Rankings:**

Hospitality & Leisure Management: Top 150 in the world, 2nd in South Africa and 2nd in Africa

Economics & Econometrics: Top 450 in the world, 4th in South Africa and joint 5th in Africa

Times Higher Education (THE)

- **World Rankings:** 401-500 in the world / 4th in South Africa and Africa
- **Subject Rankings:**

Business & Economics: Top 250 in the world, 1st in South Africa and Africa

US News & World Report's Best Global Universities Rankings (BGUR)

- **World Rankings:** 421 in the world / 5th in South Africa and 7th in Africa
- **Subject Rankings:**

Center for World University Rankings (CWUR)

- **World Rankings:** 628 in the world, in the Top 3.1% / 6th in South Africa and 7th in Africa

University Ranking by Academic Performance (URAP)

- **World Rankings:** 537 in the world / 6th in South Africa and 9th in Africa

ADMISSION REQUIREMENTS

Admission requirements for candidates with National Senior Certificate (NSC)

PROGRAMME	Qualification Code	Minimum APS	English	Mathematics	Mathematical Literacy	Technical Mathematics	CAREER	CAMPUS
-----------	--------------------	-------------	---------	-------------	-----------------------	-----------------------	--------	--------

DEGREE PROGRAMMES

Bachelor Degrees (3 years)

ACCOUNTING (CA)	B34CAQ	33	4 (50%+)	5 (60%+)	Not accepted	Not accepted	Chartered Accountant – CA (SA).	APK
HOSPITALITY MANAGEMENT	B34HNQ	26 with Maths/Tech Maths OR 28 with Mathematical Literacy	5 (60%+)	4 (50%+)	5 (60%+)	4 (50%+)	This degree serves the needs of students who aspire to move into leadership positions in the Hospitality Industry i.e. General Manager, Financial Manager amongst other positions in the industry.	APB
HUMAN RESOURCE MANAGEMENT	B34HRQ	28 with Maths/Tech Maths OR 28 with Mathematical Literacy	4 (50%+)	4 (50%+)	5 (60%+)	4 (50%+)	Human Resource Practitioners, HRM Personnel Manager, HRM Personnel Officer, Training Manager, Recruitment and Selection Officer. <i>Graduates may register as HR Practitioners with the South African Board of People Practices (SABPP) to encourage regulated, standardised HR practices.</i>	APK
TOURISM DEVELOPMENT AND MANAGEMENT	B34TDQ	26 with Maths/Tech Maths OR 28 with Mathematical Literacy	5 (60%+)	3 (40%+)	4 (50%+)	3 (40%+)	Entrepreneur, Travel Agent, Tour Guide, Tour Operator, Event and Conference Organiser, Public Relations, Marketing, Leisure Activity Co-ordinator, Visa Consultant, Researcher, Academia, Teaching, Training and Lecturing, Transportation, Car Rental Agent, Development Consultant, Corporate Consulting, National, Provincial and Local Government Tourism Departments and Agencies, Technical Writer and Editor, Website Developer and Manager, Travel Blogger, Sales Co-ordinator and Manager.	APB

Admission requirements for candidates with National Senior Certificate (NSC)

PROGRAMME	Qualification Code	Minimum APS	English	Mathematics	Mathematical Literacy	Technical Mathematics	CAREER	CAMPUS
Bachelor of Arts Degree (3 years)								
PUBLIC MANAGEMENT AND GOVERNANCE	B34PKQ / B34PSQ	26 with Maths/Tech Maths OR 28 with Mathematical Literacy	5 (60%+)	3 (40%+)	5 (60%+)	3 (40%+)	Public Managers in State Departments, Provincial Departments and Municipalities, Public, Private and NGO Sector, Administrative and Managerial Positions.	APK / SWC
Bachelor of Commerce Degree (3 years)								
ACCOUNTING	B3A17Q	28	4 (50%+)	4 (50%+)	Not accepted	Not accepted	Financial Manager, Accountant, Internal Auditor, Tax Consultant.	APK
BUSINESS MANAGEMENT	B34BMQ	26	4 (50%+)	4 (50%+)	Not accepted	4 (50%+)	Training Manager, HRD Manager, Employment Relations Manager, Product Development Manager, Branch Manager, General Manager, Change Facilitator, Management Consultant, Entrepreneur, Business Innovator.	SWC
ECONOMICS AND ECONOMETRICS	B3N14Q	28	4 (50%+)	4 (50%+)	Not accepted	Not accepted	Economist, Econometrician, Economic Analyst, Forecaster, Economic Planner.	APK
ENTREPRENEURIAL MANAGEMENT	B1CEMQ	26	4 (50%+)	4 (50%+)	Not accepted	4 (50%+)	Business Owner, Marketing Manager, Manager, Consultant, Business Manager, Financial Manager.	APK
FINANCE	B3F17Q	28	4 (50%+)	4 (50%+)	Not accepted	Not accepted	Financial Manager, Stockbroker, Accountant, Financial Consultant, Investment Advisor.	APK
INDUSTRIAL PSYCHOLOGY	B34IPQ	26	4 (50%+)	4 (50%+)	Not accepted	4 (50%+)	Specialist HR Practitioners dealing with the problems or challenges arising from employees' relationship within the work environment.	APK

PROGRAMME	Qualification Code	Minimum APS	English	Mathematics	Mathematical Literacy	Technical Mathematics	CAREER	CAMPUS
INFORMATION MANAGEMENT	B34IMQ	26 with Maths/Tech Maths OR 28 with Mathematical Literacy	4 (50%+)	4 (50%+)	6 (70%+)	4 (50%+)	Information Manager, Knowledge Manager, Researcher, Competitive Intelligence Officer, Records Manager.	APK
INFORMATION SYSTEMS	B1CISQ	26	4 (50%+)	4 (50%+)	Not accepted	4 (50%+)	IT Project Manager, Business Analyst, IT Manager, Business Intelligence Expert, Chief Information Officer, Database Administrator, Systems Analyst, IT Consultant.	APB
MARKETING MANAGEMENT	B1CMMQ	26	4 (50%+)	4 (50%+)	Not accepted	4 (50%+)	Advertising Manager, Brand Manager, Customer Relationship Manager, Marketing Manager, Marketing Researcher, Customer Services Manager, Marketing Consultant, Media Planner, Sales Manager.	APK
TRANSPORT AND LOGISTICS MANAGEMENT	B34TLQ	27	5 (60%+)	4 (50%+)	Not accepted	4 (50%+)	Logistics Manager, Consultant, Production Manager.	APK

NOTES:

- The achievement level (rating) obtained for Life Orientation is **NOT** included in the calculation of the Admission Points Score (APS).
- All degrees are presented in English only.
- The Bachelors of Commerce in Accounting degree programme (B3A17Q) does not provide direct access to the

Postgraduate Diploma in Accounting Science. However, students who complete the Bachelors of Commerce in Accounting degree, may apply for a bridging programme (subject to space, admission requirements and the continued future offering of this programme). Upon completion of this bridging programme and compliance with specific performance requirements, candidates may then apply for the Postgraduate Diploma in Accounting Science.

PROGRAMME	Qualification Code	Minimum APS	English	Mathematics	Mathematical Literacy	Technical Mathematics	CAREER	CAMPUS
-----------	--------------------	-------------	---------	-------------	-----------------------	-----------------------	--------	--------

EXTENDED DEGREE PROGRAMMES

Bachelor of Commerce Extended Degree (4 years)

ACCOUNTING	B3AE7Q	25 with Maths OR 28 with Maths Lit	4 (50%+)	3 (40%+)	6 (70%+)	Not accepted	Financial Manager, Accountant, Internal Auditor, Tax Consultant.	APK
2025 UNDERGRADUATE STUDIES								
BUSINESS MANAGEMENT	B34BEQ	25 with Maths/Tech Maths OR 28 with Maths Lit	4 (50%+)	3 (40%+)	6 (70%+)	3 (40%+)	Management opportunities in various industries on first and/or middle management level, Training Manager, HRD Manager, Employment Relations Manager, Product Development Manager, Branch Manager, General Manager, Change Facilitator, Management Consultant, Entrepreneur, Business Innovator.	APK
ECONOMICS AND ECONOMETRICS	B3NE4Q	25 with Maths OR 28 with Maths Lit	4 (50%+)	3 (40%+)	6 (70%+)	Not accepted	Economist, Econometrician, Economic Analyst, Forecaster, Economic Planner.	APK
FINANCE	B3FE7Q	25 with Maths OR 28 with Maths Lit	4 (50%+)	3 (40%+)	6 (70%+)	Not accepted	Financial Manager, Stockbroker, Accountant, Financial Consultant, Investment Advisor.	APK

PROGRAMME	Qualification Code	Minimum APS	English	Mathematics	Mathematical Literacy	Technical Mathematics	CAREER	CAMPUS
-----------	--------------------	-------------	---------	-------------	-----------------------	-----------------------	--------	--------

DIPLOMA PROGRAMMES

Diplomas (3 years)

ACCOUNTANCY *	D3A15Q	22 with Maths/Tech Maths OR 24 with Mathematical Literacy	4 (50%+)	3 (40%+)	5 (60%+)	3 (40%+)	Accounting Technician, Bookkeeper, Cost Accountant.	SWC
BUSINESS INFORMATION TECHNOLOGY	D11401	22 with Maths/Tech Maths OR 24 with Mathematical Literacy	4 (50%+)	3 (40%+)	6 (70%+)	3 (40%+)	IT practitioners provide solutions to business problems through the application of computer based technology and techniques.	APB
FINANCIAL SERVICES OPERATIONS *	D34F9Q	22 with Maths/Tech Maths OR 24 with Mathematical Literacy	4 (50%+)	3 (40%+)	5 (60%+)	3 (40%+)	Middle and Back Office Operations: Financial Operations Administrator, Operations Analyst, Risk and Compliance Officer.	SWC
FOOD AND BEVERAGE OPERATIONS	D34FBQ	22 with Maths/Tech Maths OR 24 with Mathematical Literacy	4 (50%+)	3 (40%+)	5 (60%+)	3 (40%+)	The successful food and beverage operations student will possess the appropriate skills at operational and supervisory levels within the food and beverage industry in South Africa or internationally. Persons can work in food and beverage units, private and executive catering, marketing and promotions, training or in areas of food and drinks within the industry.	APB

Admission requirements for candidates with National Senior Certificate (NSC)

PROGRAMME	Qualification Code	Minimum APS	English	Mathematics	Mathematical Literacy	Technical Mathematics	CAREER	CAMPUS
LOGISTICS	D1LOGQ	24 with Maths/Tech Maths OR 26 with Mathematical Literacy	4 (50%+)	3 (40%+)	5 (60%+)	3 (40%+)	Purchasing Manager, Warehouse Manager.	APB
MARKETING **	D34MKQ	22 with Maths/Tech Maths OR 24 with Maths Lit	4 (50%+)	3 (40%+)	5 (60%+)	3 (40%+)	Advertising, Brand Management, Customer Relationship Manager, Marketing Manager, Marketing Researcher, Customer Services, Marketing Consulting, Media Planner and Sales Manager.	APB
PEOPLE MANAGEMENT	D34P2Q	22 with Maths/Tech Maths OR 24 with Maths Lit	4 (50%+)	3 (40%+)	5 (60%+)	3 (40%+)	People Management Practitioners dealing with employee-related issues in organisations. Human Resource Officer, Employee Benefits Officer, Health and Wellness Official, Recruitment and Selection Official, Human Resource Researcher, Training and Development Officer, Change Facilitator, Organisational Development Practitioner.	SWC

NOTES for 3 year diplomas

- The achievement level (rating) obtained for Life Orientation is **NOT** included in the calculation of the Admission Points Score (APS).
- All diplomas are presented in English only.

* A student in the College of Business and Economics who has diploma endorsement but does not meet the specific diploma entry requirements may obtain access to diploma studies in Accountancy or Financial Services Operations through the Programme in Commercial Accounting and must complete all prescribed modules of the latter programme within the first year of registration.

- ** A student in the College of Business and Economics who has a the Higher Certificate endorsement and has completed the Higher Certificate in Marketing and Sales with UJ's Department of Marketing Management, may gain access to the diploma in Marketing or Retail Business Management provided that they:
- have completed the Higher Certificate in Marketing and Sales within the first year of registration;
 - obtained a minimum mark of 60% for each of the following modules: English 1A, English 1B, Mathematics for Marketers 1A and Mathematics for Marketers 1B. Additional department selection criteria will apply.
 - Alternatively, a student who has completed the Short Learning Programmes (SLPs) Retail Management (S3M01Q) or Introduction to Retail Management (MKT010) may also gain access to the Diploma in Retail Business Management.

*** It is recommended that applicants to the Small Business Management qualification show a desire to start their own business and to become an entrepreneur.

PROGRAMME	Qualification Code	Minimum APS	English	Mathematics	Mathematical Literacy	Technical Mathematics	CAREER	CAMPUS
RETAIL BUSINESS MANAGEMENT **	D34RMQ	22 with Maths/Tech Maths OR 24 with Maths Lit	4 (50%+)	3 (40%+)	5 (60%+)	3 (40%+)	Prepares the graduate for work in the retailing industry. Buyers, Store Managers, Layout Specialists, Visual Merchandisers, Product Category Managers, Sales Managers, Service Retailing, Advertising and Sales Promotion, Customer Experience Leaders, Customer Analytics, Retail Software Developers, Business Owner.	APB
SMALL BUSINESS MANAGEMENT ***	D15BMQ	22 with Maths/Tech Maths OR 24 with Maths Lit	4 (50%+)	3 (40%+)	5 (60%+)	3 (40%+)	Entrepreneur, Business Owner, Business Advisor, Business Manager, Social Entrepreneur. <i>It is recommended that applicants to this qualification show a desire to start their own business.</i>	SWC
TOURISM MANAGEMENT	D34TMQ	22 with Maths/Tech Maths OR 24 with Maths Lit	4 (50%+)	3 (40%+)	5 (60%+)	3 (40%+)	Prepares the graduate with operational and managerial aspects to work in a variety of different tourism related sectors.	APB
TRANSPORTATION MANAGEMENT	D1TRMQ	24 with Maths/Tech Maths OR 26 with Maths Lit	4 (50%+)	3 (40%+)	5 (60%+)	3 (40%+)	Transportation Manager.	APB
EXTENDED DIPLOMA PROGRAMMES								
Extended Diplomas (4 years)								
LOGISTICS	D1LOGE	22 with Maths/Tech Maths OR 24 with Maths Lit	4 (50%+)	3 (40%+)	5 (60%+)	3 (40%+)	Purchasing Manager, Warehouse Manager.	APB
PEOPLE MANAGEMENT	D34PEQ	19 with Maths/Tech Maths OR 21 with Maths Lit	4 (50%+)	3 (40%+)	4 (50%+)	3 (40%+)	People Management Practitioners deal with employee-related issues in organisations. Human Resource Officer, Employee Benefits Officer, Health and Wellness Official, Recruitment and Selection Official, Human Resource Researcher, Training and Development Officer, Change Facilitator, Organisational Development Practitioner.	SWC
SMALL BUSINESS MANAGEMENT	D1SBME	19 with Maths/Tech Maths OR 21 with Maths Lit	4 (50%+)	3 (40%+)	4 (50%+)	3 (40%+)	Entrepreneur, Business Owner, Business Advisor, Business Manager, Social Entrepreneur. <i>It is recommended that applicants to this qualification show a desire to start their own business.</i>	SWC

PROGRAMME	Qualification Code	Minimum APS	English	Mathematics	Mathematical Literacy	Technical Mathematics	CAREER	CAMPUS
TRANSPORTATION MANAGEMENT	D1TRME	22 with Maths/Tech Maths OR 24 with Maths Lit	4 (50%+)	3 (40%+)	5 (60%+)	3 (40%+)	Transportation Manager.	APB

NOTES:

- The achievement level (rating) obtained for Life Orientation is **NOT** included in the calculation of the Admission Points Score (APS).
- All extended diplomas are presented in English only.
- **Only first time (new) entering candidates are considered for admission into the extended diploma programmes.** This means that those who was previously enrolled at a Higher Education Institution do not qualify.

PROGRAMME	Qualification Code	Minimum APS	English	Mathematics	Mathematical Literacy	Technical Mathematics	CAREER	CAMPUS
-----------	--------------------	-------------	---------	-------------	-----------------------	-----------------------	--------	--------

ONLINE PROGRAMMES

BACHELOR OF COMMERCE IN ACCOUNTANCY	B34ACP	28 with Mathematics	4 (50%+)	4 (50%+)	Not accepted	Not accepted	Financial Manager, Accountant, Internal Auditor, Tax Consultant.	Online
BACHELOR OF HUMAN RESOURCE MANAGEMENT	B34HRP	28 with Maths/Tech Maths OR 28 with Maths Lit	4 (50%+)	4 (50%+)	5 (60%+)	4 (50%+)	HRM Personnel Manager, HRM Personnel Officer, Training Manager, Recruitment and Selection Officer.	Online

Reasons for studying at UJ

UJ offers not only a special programme called the **First Year Experience** to help orientate students throughout the first year but we also offer a **Senior Student Experience** that gears students towards the workplace!

Shanghai Ranking

- **World Rankings:**
501-600 in the world
5th in South Africa and 6th in Africa

Quacquarelli Symonds (QS)

- **World Rankings:**
306 in the world, in the **Top 1%**
4th in South Africa and Africa

Times Higher Education (THE)

- **World Rankings:**
401-500 in the world
4th in South Africa and Africa
- **THE Impact Rankings:**
46 in the world
1st in South Africa and Africa
- **THE Young University Rankings:**
151-200 among young universities
4th in South Africa
- **THE Sub-Saharan Africa University Rankings:**
2nd among universities in the sub-Saharan Africa region,
2nd in South Africa

US News & World Report's Best Global Universities Rankings (BGUR)

- **World Rankings:**
421 in the world
5th in South Africa and 7th in Africa

Center for World University Rankings (CWUR)

- **World Rankings:**
628 in the world, in the **Top 3.1%**
6th in South Africa and 7th in Africa


University Ranking by Academic Performance (URAP)

- **World Rankings:** 537 in the world
6th in South Africa and 9th in Africa

UJ's 2023 GLOBAL UNIVERSITY RANKINGS

Grab the opportunity to participate in a variety of sports and train alongside Olympians and Paralympians on state-of-the-art pitches, tracks and fields, or just keep fit by joining one of the gyms on each of our 4 campuses.

Be part of a young, vibrant and agile university that reflects and adapts easily to our country's aspirations, while maintaining a global relevance through numerous international partnerships.

A large group of diverse students, including men and women of various ethnicities, are posing on a set of wooden stairs. They are all smiling and looking towards the camera, creating a vibrant and energetic atmosphere. The students are dressed in casual clothing like t-shirts, tank tops, and jeans. The background is a warm, orange-toned sky.

**178 Internationally respected
and accepted qualifications.**

www.uj.ac.za

Join a university that cares enough to have raised over R300 million since the start of 2016 in order to support of the Missing Middle Campaign. UJ also ensures that more than 6 000 needy students have two healthy meals per day.

Study in the vibrant City of Gold – the economic hub of South Africa. Join a vibrant, cosmopolitan, progressive group of students and academics on their way to re-imagining the future!

UJ offers an amazing on-campus experience whether you live in one of UJ's residences, belong to a dayhouse or whether you just want to socialise at the Student Centres on all campuses.

We ensure the health, safety and security of all our students through our own on-campus health services and UJ Protection Services.

Did you know that during the first five years of UJ's existence it doubled its targeted research output and to this day, continues to break records!

Please bear in mind that UJ (and most other universities for that matter) only have a certain number of spaces available for first-year applicants and only the best learners will be selected to attend the University. Ensure that you apply on time in your Grade 12 year.

BURSARIES

Merit bursaries

Academic merit bursaries are awarded annually on the grounds of exceptional academic achievement. This is determined according to marks obtained in the six best subjects (excluding LO) on your senior certificate. Your final senior certificate will determine your first year bursary. Bursaries for second and third year studies will be awarded according to the average obtained in the June and December University examinations.

Orange Carpet

The Orange Carpet rewards programme is a UJ initiative to further recognise top achievers. The objective of the campaign is to allow top-performing learners early conditional admission to the University as well as special benefits. To qualify for these benefits, a learner must obtain at least an Admission Point Score (APS) of 37 and above with a Level 6 or higher in all subjects in either their final Grade 11 or final Grade 12 results. Meet the specific subject requirements for the programme you are interested in and obtain a 70% and above in all relevant subjects. Final acceptance, for applicants conditionally admitted based on their final Grade 11 results, will be dependent on the learner maintaining these results in their final Grade 12 results.

Final admission to the Orange Carpet initiative for applicants writing final Grade 12 other than the NSC or IEB, will be based on the discretion of the relevant faculty.

This initiative begins from February and closes with all undergraduate programmes on 30 September. Submit your application without delay or call Student Marketing for any enquiries: 011 559 6680.

APS (Admission Point Score)	Bursary Value*
37-39	50%
40-41	75%
42	100%
Higher than 42	100% + R5 485

*** Please note:**

Bursary values are based on a specific curriculum's tuition fees. Orange Carpet admitted status is allocated to a top achiever applicant who has a total APS of 37 calculated as follows:

- exclude Life Orientation;
- achieve a minimum of 70% in the six best subjects;
- subjects used to calculate the total APS must include the required programme subjects.

Only prospective students who are entering for their first undergraduate studies are eligible for the Orange Carpet initiative. Prospective students who have already undertaken studies at UJ or elsewhere are not eligible for this initiative.

UJ Jenius Club

After first year registration, Orange Carpet members will become UJenius club members. To join or to keep UJenius Club membership for the 2nd, 3rd and final year of your undergraduate study, students need to have achieved a year average of 75% in the preceding year, on a full course load, and with no module below 70%. UJenius club members will qualify for the following benefits:

- A UJenius Merit bursary.
- Library privileges that are the same as those for postgraduate students.
- Exclusive invitation to prestigious events.
- Students with a consistent UJenius Club membership for a period of three years will be given preference for 'study abroad' programmes.

Leadership bursary

The President, Vice-President, Secretary or Treasurer of a secondary school body who enrolls at the University will receive a bursary of R1 650.

Culture and sports bursaries

The University offers many cultural activities and sport opportunities, as well as a large number of bursaries in these fields. Sport bursaries are awarded for achievement at provincial or a higher level. Applications for sports bursaries must be submitted on the prescribed bursary application form obtainable from the Sports Bureau. Closing date for applications is 30 September.

Cultural Bursaries are awarded to members of the UJ Arts & Culture groups.

Enquiries: Culture bursaries: 011 559 2034 or Sports bursaries: 011 559 2252

Loans

National Student Financial Aid Scheme (NSFAS)

Study grants vary according to family income and cover the actual costs of studies for accepted undergraduate students. Applications for NSFAS loans must be submitted on the prescribed loan application form obtainable from the Division of Bursaries and Loans.

Please check the NSFAS website for the losing and registration dates -

www.uj.ac.za/nsfas

Enquiries:

Auckland Park Bunting Road Campus

011 559 1193 / 1250 / 1173 / 1594

Auckland Park Kingsway Campus

011 559 3642 / 3906 / 4035 / 3768 / 3575

Doornfontein Campus

011 559 6195 / 6412 / 6063

Soweto Campus

011 559 5507 / 5508

Email: nsfas@uj.ac.za

Edu-loan

Study loans are available to registered students.

Enquiries: Edu-loan Customer Services
086 055 5544

INTERNATIONAL STUDENTS

Admission for all applicants is subject to the faculty qualifications admission point score requirements. Registration of admitted international applicants is subject to compliance requirements as stipulated by the Immigration Act No.13 of 2002, the regulations made thereunder and the University's policy.

Application

Application documentation for international applicants:

- Final Grade 11 results, if currently in Grade 12 and pursuing a South African NSC or IEB curriculum, or
- Final School Leaving results
- Valid Passport or Asylum Seeker Permit or Refugee Permit or National Identity Document or Permanent Residence certificate or ID.
- For calculation of admission point scores refer to the table on page 15.

To enrol for a degree programme in South Africa, applicants with international school leaving results are required to qualify for any type of Matriculation Exemption from the Matriculation Board (USAF) for admission into undergraduate degree studies. For further information on the application process for Matriculation Exemption visit the website **www.mb.usaf.ac.za**.

Degree seeking applicants with the American High School Diploma are required to submit their SAT statement with Reading and Writing at a score of 610 and Mathe-

matics at a score of 530 or a letter of admission from a recognised American university as part of their application for Matriculation Exemption.

English Proficiency Requirement

Prospective students are required to provide proof of English Proficiency where English was not used as a medium of instruction, learning or teaching. The University accepts appropriate proof of English proficiency certificates from: IELTS, TOEFL, and UJELP.

Only the following will be accepted: UJELP and IELTS at an overall score of 6 and TOEFL at an average score of 80 -104 for undergraduate programmes. Alternatively, you may elect to write the University of Johannesburg English Language Programme Test (UJELP). Should you choose to write the University of Johannesburg English Language Programme Test (UJELP), contact +27 (0)11 559 4265 or

mmasango@uj.ac.za or ujelp1@uj.ac.za.

Compulsory Study Visa

All accepted international applicants (passport holders) are required by law, upon receipt of their admission or acceptance letter, to immediately apply for a study visa in line with the Immigration Act No. 13 of 2002, Immigration Regulations.

For more information please contact the University of Johannesburg, Division for Internationalisation or visit the Republic of South Africa Embassy, Consulate or Mission in your home country or visit the Republic of South Africa Department of Home Affairs website **www.dha.gov.za**.

University fees

All accepted international applicants who are privately or self-funded are required to pay their fees prior to or during registration as follows:

TUITION AND UJ RESIDENCE FEES (ON CAMPUS RESIDENCE)

- a) An upfront payment of 30% of tuition fees to be paid at registration.
- b) 35% of the tuition fees to be paid by 30 April.
- c) 35% of the tuition fees to be paid by 31 July.

The University will offer a 5% discount should all fees be paid at registration. Fees generally increase between 10% and 15% per year. Please contact the University in December to obtain the approved fees for the 2023 academic year.

International Levy 2024

Please note that the international levy is non-refundable and expires on 31 December of the year of registration. The international levy for the year 2024 will be published prior to registration.

How to pay

Payments to the University can be made in the form of a foreign bank payment or electronic transfer into the following account:

University of Johannesburg

FNB UJ Main Account

Account type: Cheque

Account number: 626 158 73280

Branch name: FNB Client Services

Branch code: 210-554

Swift code: FIRNZ AJJ

International applicants making payments at First National Bank (FNB) in South Africa should make use of the following banking details:

FNB UJ Main Account

Account type: Cheque

Account number: 626 158 73280

Branch name: FNB Client Services

Branch code: 210-554

All applicants must use their **passport number** as a reference.

Applicants must provide the University with proof of payment from the bank where the transfer was made.

The UJ English Language Programme*

*UJELP is a Short Learning Programme for international students at the University of Johannesburg. It offers a platform for students to learn and practise the English language, as well as the academic, social and behavioural skills appropriate for academia.

Placement Tests (PT)

Students registering for UJELP must complete a Placement Test focusing on their competence in Grammar and Vocabulary, Listening, Writing and Oral presentation. This Placement Test may be completed outside of South Africa – Phase 1 (online) or at UJ Phase 2 (on-site), to enable students to obtain their English proficiency results before registration or for visa application purposes (outside of South Africa). By using the proficiency levels of the Common European Framework of Reference (CEFR) for languages, students are placed in the following groups: Elementary (A1 and A2), Intermediate (B1 and B2), and Advanced (C1 and C2).

Should you choose to write the UJELP placement test, please contact +27 (0)11 559 2127 or ujelp1@uj.ac.za for further information on payment of fees and mode of offering.

**ADMISSIONS OFFICERS:
INTERNATIONAL STUDENTS**

Auckland Park Kingsway Campus (APK) Mrs

Mampou Ngqumshe

Tel no: +27 (0)11 559 4517

mampoum@uj.ac.za

Doornfontein Campus (DFC)

Mr Thabang Mothebe

Tel no: +27 (0)11 559 6510

thabangm@uj.ac.za

**Auckland Park Bunting Road Campus (APB)
and Soweto Campus (SWC)**

Ms Palesa Makwela

Tel no: +27 (0)11 559 1027 or

+27 (0)11 559 5014

pmakwela@uj.ac.za

**International Student Welfare
and Academic Liaison Officer**

Ms Shantelle Sass

Tel no: +27 (0)11 559 7780

ssass@uj.ac.za

Physical Address

University of Johannesburg

International House

Madibeng Building

Corner of Kingsway and University Road

Auckland Park

Johannesburg

South Africa

For more information visit www.uj.ac.za or the Division for Internationalisation home page: www.uj.ac.za/international.

CBE GENERAL ENQUIRIES

(YOUR FIRST POINT OF CONTACT): Email: **AskCBE@uj.ac.za**

AUCKLAND PARK KINGSWAY CAMPUS

Mr Jacob Simelane

Tel: +27 11 559 2475

Email: **jsimelane@uj.ac.za**

Mrs Lou Nuku

Tel: +27 11 559 2492

Email: **lnuku@uj.ac.za**

AUCKLAND PARK BUNTING ROAD CAMPUS

Mr Oupa Thebe

Tel: +27 11 559 1364

Email: **oupat@uj.ac.za**

Ms Andronica Ndlovu

Tel: +27 11 559 1244

Email: **andronican@uj.ac.za**

SOWETO CAMPUS

Ms. Otsile Sekwati

Tel: +27 11 559 5579

Email: **otsike@uj.ac.za**

Ms Matebogo Mangqangwana

Tel: +27 11 559 5406

Email: **mtebogom@uj.ac.za**

Website: www.uj.ac.za/cbe



UNIVERSITY
OF
JOHANNESBURG

**THE FUTURE IS NOT SOME
PLACE WE ARE GOING BUT
ONE WE ARE CREATING.**

Creating Tomorrow.

**Our Future
Reimagined**