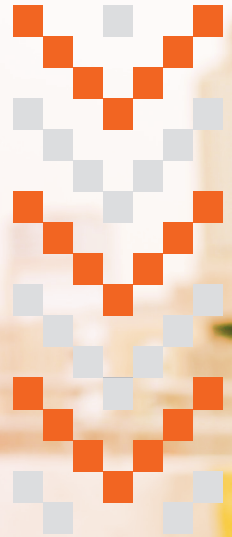




**Our Future
Reimagined**



Advanced Diploma in Remedial Education (A5REMO)

The Faculty of Education at UJ is committed to knowledge-making for 21st-century education. To this end, the faculty offers an **ADVANCED DIPLOMA IN REMEDIAL EDUCATION (A5REMO)** programme with an **NQF Level 7**.



PURPOSE

The purpose of this Advanced Diploma in Remedial Education is to prepare teachers with theoretical knowledge and practical skills in order to develop as remedial teachers and learning support specialists. Students will develop specialized competence and evidence-based practices around the pedagogy and didactics of remedial education.

ADMISSION REQUIREMENTS

To gain admission into the Advanced Diploma in Remedial Education, a potential student should possess a four-year Bachelor of Education degree.

OR

A general NQF level 6 first degree or diploma, plus a 120C level 7 Advanced Diploma in Teaching.

OR

A former 120C level 6 Postgraduate Certificate in Education.

OR

A former Higher Diploma in Education (Undergraduate).

OR

A former Further Diploma in Education.

OR

A former Advanced Certificate in Education (120C level 6).

OR

An Advanced Certificate in Teaching.

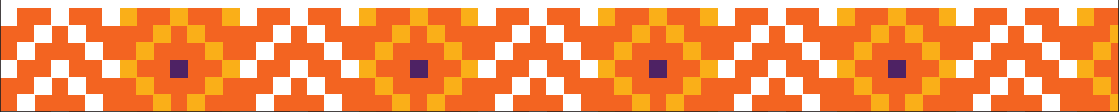
OR

A former three- year College of Education Diploma or A National Professional Diploma in Education

(NPDE) (360C at level 5) followed by an Advanced Certificate in Teaching.

ADDITIONAL ADMISSION REQUIREMENTS

In addition to the minimum admission requirements as outlined above, prospective students could undergo a selection process, including personal online interviews.



OUTCOMES OF THIS PROGRAMME

Exit level outcomes: Students must demonstrate:

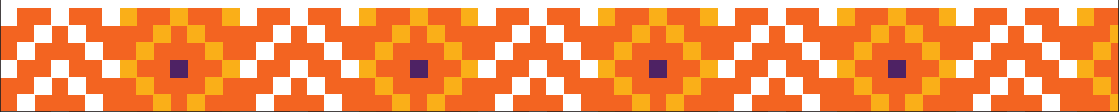
- Sound knowledge concerning the pedagogy and didactics of remedial education: basic linguistics, language acquisition, emergent literacy, orthography, learning disability, diagnostic assessment principles, learning support and parental involvement.
- Competence in diagnosing scholastic learning difficulties;
- Appropriate and adaptable professional skills and judgement in evaluating appropriate and effective curriculum differentiation and adapted classroom practices, which allow for remedial education to be promoted in classrooms.
- The capacity to critically analyse relevant remedial and support materials, resources and practices in the light of a conceptual understanding of the specialist area of remedial education.
- A commitment to high ethical standards in the practice of remedial education, collaboration with stakeholders and ongoing professional improvement.

PROGRAMME STRUCTURE

- a) The programme is offered part-time (online).
- b) Formal instruction is two years part-time.
- c) All modules are compulsory.
- d) Two modules per year.

The curriculum integrates theoretical and practical components required in the training of remedial teachers and learning support specialists. The theory around the following topics informs the practice of remedial teachers: learning disability (dyslexia, dysgraphia, dyscalculia), primary and second language acquisition, linguistics (phonology, semantics, morpho-syntax, pragmatics), orthography, learning support, and parental involvement.

The practical component of the programme focuses on diagnosing scholastic learning difficulties; designing and implementing remedial intervention support plans; reporting on assessments and interventions; and collaborating with parents, teachers, and multi-disciplinary teams. The practical work experience is included in each module and is supervised. The student identifies a learner with a scholastic learning difficulty and discusses the learning problem with a lecturer or tutor.



CURRICULUM

| Curriculum summary – Advanced Diploma in Remedial Education | | | |
|---|-------------|-----------|---------|
| First-year – Compulsory year modules | | | |
| Module name | Module code | NQF level | Credits |
| Remedial Foundations | REMFYE1 | 7 | 30 |
| Scholastic assessment | SASSYE1 | 7 | 30 |
| Second year – Compulsory year modules (These modules are to be completed in the second (2nd) year) | | | |
| Learning support | LSUPYE1 | 7 | 40 |
| Parental involvement | PARIYE1 | 7 | 20 |

ADDITIONAL INFORMATION

Compulsory class attendance for **part-time** studies will be on selected Saturdays.

**Lectures and discussions may be conducted both physically (on campus) as well as virtually, as may be prescribed from time to time.*

DISCLAIMER

Fulfilling all the minimum entry requirements does not guarantee acceptance into a particular programme. The faculty reserves the right to limit numbers in line with its enrolment targets.

The Faculty of Education also reserves the right to cancel an application or registration in the event that there are insufficient student enrolments to ensure the viability of the programme.

APPLICATION AND REGISTRATION INFORMATION

To submit your **application**, apply online using the following link **Apply@UJ**. The closing dates can be seen on the UJ website.

The due dates for **registration** are available at **Registrations@UJ**.

** Only accepted applicants are permitted to register.*

CONTACT DETAILS

- **For academic-related matters** such as course content or class attendance, contact the programme coordinator, **Dr Jean Fourie** (jeanf@uj.ac.za).
- **For administrative-related matters** such as application statuses, registration, or fees contact the **Faculty's Academic Administration**
Office: phone **011 559 3251 / 011 559 5562** or email eduqueries@uj.ac.za.
www.uj.ac.za/edu