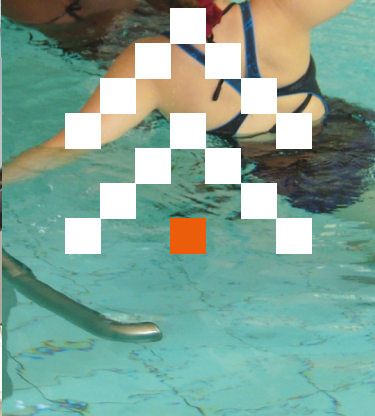




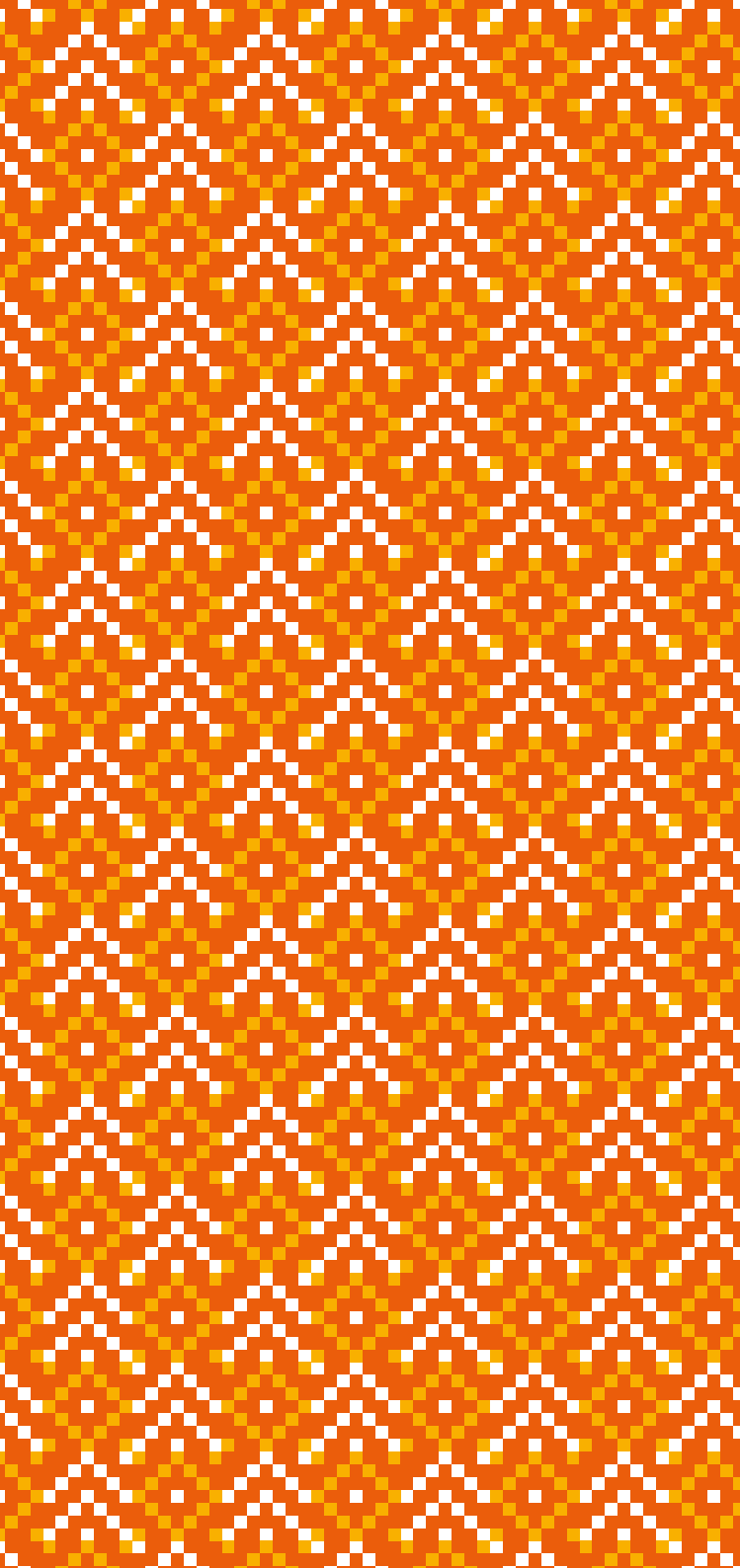
UNIVERSITY
OF
JOHANNESBURG

FACULTY OF
HEALTH SCIENCE



Health Training Centre

The Future
Reimagined



CONTENTS

Biokinetics	1
Chiropractic	3
Complementary Medicine	6
Optometry	8
Podiatry	11
Medical Imaging and Radiation Sciences (Radiography)	13



BIOKINETIC CLINIC

WHAT IS BIOKINETICS?

Biokinetics is a healthcare profession specialising in the rehabilitative exercise therapy to manage a wide range of medical conditions to promote wellness and to prevent the onset of lifestyle diseases. Our biokinetisists are registered with the Health Professions Council of South Africa (HPCSA).

SERVICES AVAILABLE

Biokineticists are involved in the assessment and treatment of the following:

- Orthopaedic conditions (e.g. low back / hip / knee / shoulder injuries or joint replacements)
- Chronic neurological diseases (e.g. Parkinson's disease)
- Muscular imbalances (e.g. hamstring weaknesses)
- Metabolic syndromes (e.g. diabetes mellitus)
- Exercise prescription and training for special groups: children, during pregnancy, elderly, disabilities etc.
- Obesity (child and adult)
- Cardiovascular diseases (e.g. high blood pressure, high cholesterol, after a heart attack)
- Sport injuries
- Physical wellness Enhancement
- Aquatic therapy offers the ideal environment for the treatment of orthopedic joint replacement, chronic neurological disease, low back pain, muscle injury, osteoarthritis, cardio-pulmonary rehabilitation, stroke and pain management.



CONTACT INFORMATION

Auckland Park Bunting Road Campus (APB)

The clinic is situated on the Auckland Park Bunting Road Campus adjacent to the SABC, and can be contacted on the following numbers:

For appointments:

Tel: 011 559 1298

Email: aesterhuizen@uj.ac.za

CLINIC HOURS

Monday - Thursday: 07:00 – 18:00

Friday: 07:00 - 15:00

Fees charged according to the prescribed medical aid rates.

Doornfontein Campus (DFC)

Synagogue Building
c/o Sherwell Street and Beit Street
(between Saratoga and Beit streets)

For appointments:

Doornfontein

Tel: 011 559 6583

Email: cking@uj.ac.za

CLINIC HOURS

Monday – Thursday: 0800 – 16:00

Friday 08:00 – 15:00

Fees are charged according to the prescribed medical aid rates and are kept low to ensure availability to all sectors of the community.



CHIROPRACTIC CLINIC

WHAT IS A CHIROPRACTOR?

The University of Johannesburg Chiropractic Clinic offers a range of treatments for musculoskeletal conditions. This includes conditions such as headache, neck pain, back pain, sporting injuries and whiplash. Chiropractors recognise the inborn ability of the body to heal itself, and the relationship between structure (primarily the spine) and function (primarily the nervous system) in the restoration and maintenance of health.

Chiropractic practitioners are registered with the Allied Health Professions Council of South Africa (AHPCSA).

CHIROPRACTIC CLINIC

Doornfontein Campus
Health Training Centre (Ground floor)
Sherwell Street
(between Saratoga and Beit streets)
Doornfontein

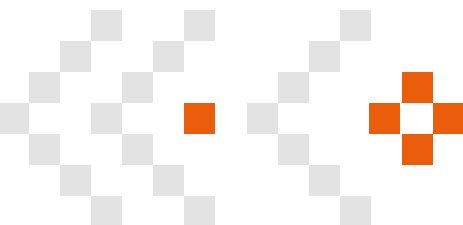
For appointments:
Tel: 011 559 6493/5
E-mail: htc@uj.ac.za

The Chiropractic Clinic offers treatment by senior chiropractic students under the supervision of qualified practitioners. Rates at this clinic are kept low to ensure availability to all sectors of the community and are not refundable by medical aids.

CLINIC HOURS

The clinic operates from 08:30 – 16:00
Monday to Friday.

In addition, research projects are continuously being conducted at the clinic. Persons interested should contact the clinic to enquire about eligibility.



SERVICES AVAILABLE

Chiropractic is primarily concerned with the diagnosis, treatment and management of what are known as neuromusculoskeletal conditions such as:

- Lower back pain
- Neck pain and headaches including migraine
- Shoulder/arm pain such as tennis elbow
- Hip/leg pain including sciatica, knee pain and foot problems

In fact, chiropractors can help almost all conditions that are nerve/muscle or joint related, but the prime area of interest is the spine and spinal problems.

Anyone can benefit from chiropractic treatment including infants, children, pregnant woman, post operative back surgery cases, senior citizens and sports people.





COMPLEMENTARY MEDICINE

HOMEOPATHY HEALTH CENTRE ACUPUNCTURE CENTRE PHYTOTHERAPY HEALTH CENTRE

WHAT IS HOMEOPATHY?

Homeopathy is a system of treating disease that stimulates the body's natural healing mechanisms without side-effects. As diagnostic practitioners, homoeopaths can play an important role in caring for patients by assessing all aspects of patients, while diagnosing and treating each patient as an individual. Homeopathy is a gentle, safe and effective form of treatment that can be used by everyone – from pregnant women and babies, to the elderly and those with chronic diseases.

WHAT IS PHYTOTHERAPY?

Phytotherapy is a science-based medical practice that uses medicinal plants or herbs as medication to treat diseases. Considered as a safe alternative, the use of herbs may reduce the incidence of drug resistance and modulate the immune system in preventing diseases.

WHAT IS ACUPUNCTURE?

Acupuncture is a system of healing originating in ancient China. Acupuncturists employ specific techniques, such as needling and moxibustion, in the treatment of various ailments.

The Complementary Medicine practitioner takes a holistic approach to the maintenance of health and the management of disease, with a focus on improving overall well-being.

Complementary Medicine practitioners are registered with the Allied Health Professions Council of South Africa (AHPCSA).

SERVICES AVAILABLE

With the various treatment options available to complementary medicine practitioners, they are able to assist in the treatment and/or management of many acute and chronic conditions, such as:

- Infections, e.g. colds, influenza and tonsillitis
- Allergies, hay fever and sinusitis
- Digestive complaints, e.g. heartburn, constipation and diarrhoea
- Hypertension

- Skin conditions, e.g. acne, eczema and fungal infections
- Fatigue and exhaustion
- Anxiety and mild depression
- Headaches
- Menstrual and menopausal problems
- Impotence and infertility
- Circulatory disorders
- Hormonal disorders, e.g. thyroid disorders and diabetes
- Childhood (paediatric) conditions
- Arthritis
- Support and management of conditions associated with low immunity

COMPLEMENTARY MEDICINE HEALTH CENTRE

Doornfontein Campus
Health Training Centre
Homeopathy and Phytotherapy 1st floor,
Acupuncture Centre 2nd floor
Sherwell Street (between Saratoga and Beit streets)
Doornfontein

For appointments: 011 559 6493/5
Dispensary: 011 559 6497
E-mail: htc@uj.ac.za

CLINIC HOURS

The clinic operates from Monday to Friday, at scheduled times, by appointment only.

The Complementary Medicine Health Centre is a teaching facility. Under the supervision of registered homeopaths, phytotherapists and acupuncturists, our students diagnose, treat, manage and care for our patients using complementary medicines and a holistic approach to health and wellness. The Complementary Medicine Health Centre operates within a campus clinic environment which offers a variety of other health services.

Supplements are available for purchase.

FEES

Fees charged at the UJ Complementary Medicine Health Centre are greatly affordable. Special fees are available for students and pensioners. Consultation and medication fees are not reimbursed by medical aids.



OPTOMETRY CLINIC

WHAT IS AN OPTOMETRIST?

An Optometrist is a healthcare professional specialising in a range of eye-care services. Optometrists are registered with the Health Professions Council of South Africa (HPCSA).

Services include visual screening, full optometric consultation and professional advice on the purchase of appropriate frames and lenses, contact lenses and other optical aids. This professional service aims examine the eyes and adnexa to determine the function of vision and offer appropriate management options for improvement.

OPTOMETRY CLINIC

Doornfontein Campus

Kubona Building
Cnr. Beit & Sherwell Streets, Doornfontein

For appointments:
Tel: 011 559 6074 / 6766
E-mail: emiln@uj.ac.za

SERVICES AVAILABLE

General and specialised clinics, including Contact lenses, Low vision, Binocular vision, Paediatrics and Ocular Pathology clinics. Pre-arranged visual screening for schools and industry are offered off campus. Clinics are open from Monday to Friday but offer limited services during university holidays. Senior students under supervision generally provide the eye-care service.

CLINIC HOURS

Doornfontein Campus:

All services operate on an appointment basis and are offered at scheduled times at the Doornfontein and Optometry Clinic.

Monday

Low Vision Clinic (10:00 - 13:00)

General Clinics (13:00 - 16:00)

Tuesday

Specialised Clinics:

Paediatrics, Binocular Vision and Contact Lenses
(13:00 to 16:00)

Wednesday

Low Vision (10:00 to 13:00)

General Clinics (13:00 to 16:00)

Thursday

General Clinics (13:00 to 16:00)

Friday

Contact Lenses and Pathology Clinics (13:00 to 16:00)

FEES

Various payment options exist. 'Budget' range options of optical devices are offered to bona fide pensioners, students and unemployed persons where payment is generally on a cash basis. Patients may claim expenses from their medical aid schemes. No direct claims are submitted to medical aids.





PODIATRY CLINIC

WHAT IS PODIATRY?

A Podiatrist is a health-care professional who assesses and manages foot and related lower-limb conditions. The University of Johannesburg Podiatry Clinic is an undergraduate teaching clinic open to members of the public. Registered practising podiatrists with specialist interests supervise undergraduate students who carry out podiatric assessments and treatments. Podiatrists are registered with the Health Professions Council of South Africa (HPCSA).

SERVICES AVAILABLE

The University Podiatry Clinic provides a comprehensive range of podiatry services including:

- Foot and lower-limb assessment
- Treatment of lesions of the skin and nail, including corns, calluses, and nail problems
- Treatment of infections (e.g. plantar warts)
- Nail surgery
- Foot care and footwear education
- Biomechanical assessment
- Diabetic foot screening
- Foot wound management
- Assessment and management of the At-Risk Foot due to systemic pathology
- Insole and orthosis manufacture



CLINICS

The following clinics are conducted each week during most of the year:

- Adult assessment and treatment
- Adult biomechanics and sports injuries
- Skin and nail surgery
- Paediatric (children)
- High risk feet, e.g. Diabetes

FEES

Rates at this clinic are kept low to ensure availability to all sectors of the community and cannot be refunded by medical aids

CLINIC HOURS

All services operate on an appointment basis and are offered at scheduled times.

Monday:

10:00 – 13:00 (Pensioners clinic)
14:00 – 16:30 (Sports clinic)

Tuesday:

09:00 – 13:00 (General clinic)

Wednesday:

09:00 – 13:00 (General clinic)
14:00 – 16:30 (Paediatric clinic)

Thursday:

10:00 – 13:00 (Pensioners clinic)

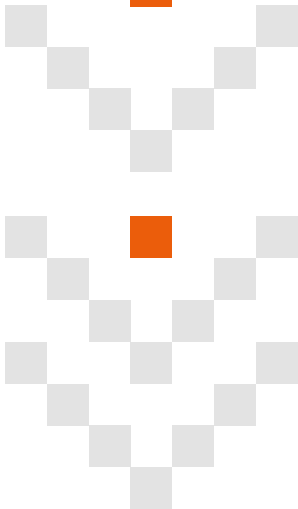
Friday:

09:00 – 13:00 (General and surgical clinics)

FURTHER INFORMATION

Doornfontein Campus
John Orr Building (1st Floor)
Sherwell Street
(between Saratoga and Beit streets)
Doornfontein

For appointments:
Tel: 011 559 6167
E-mail: bnana@uj.ac.za



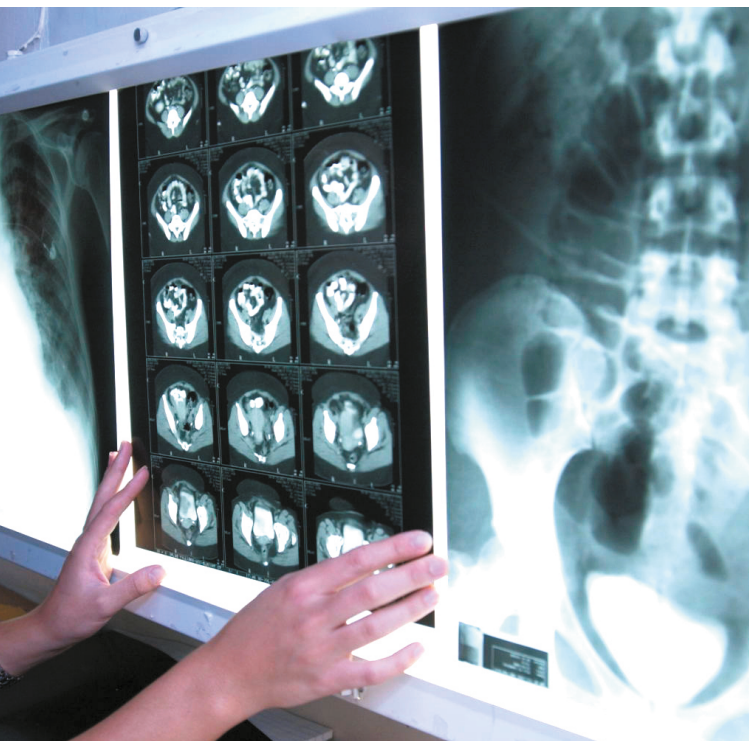
MEDICAL IMAGING AND RADIATION SCIENCES (RADIOGRAPHY CLINIC)

WHAT IS A RADIOGRAPHER?

A Radiographer is a healthcare professional specialising in imaging techniques to aid in the diagnosis of various diseases. All radiographers are registered with the Health Professions Council of South Africa (HPCSA).

RADIOGRAPHY / X-RAY CLINIC

Doornfontein Campus
Health Training Centre (Ground floor)
Sherwell Street (between Saratoga and Beit streets)
Doornfontein



SERVICES AVAILABLE

- Non-contrast skeletal, chest & abdominal X-rays

CLINIC HOURS

By appointment only:

- X-rays: Monday & Thursday 12:00 – 15:00

An HPCSA registered radiographer supervises all x-ray investigations.

FEES

The Radiography Clinic does not operate under a private practice number and fees can therefore not be claimed back from medical aid. Our fees, however, are considerably more favourable than those charged by other service providers.

CONTACT DETAILS

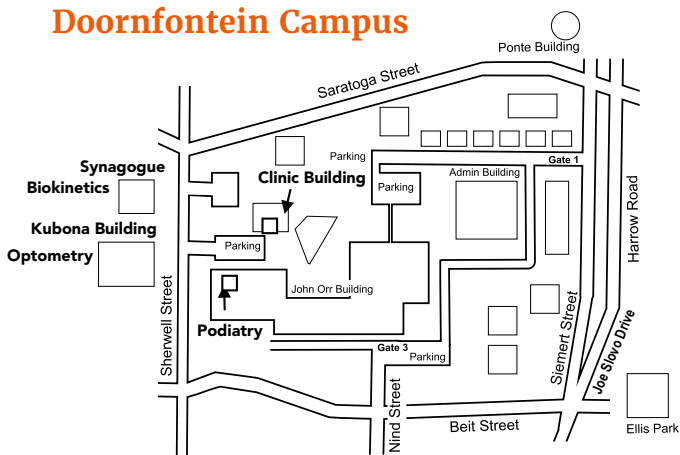
X-ray investigations:

Tel: 011 559 6493/5

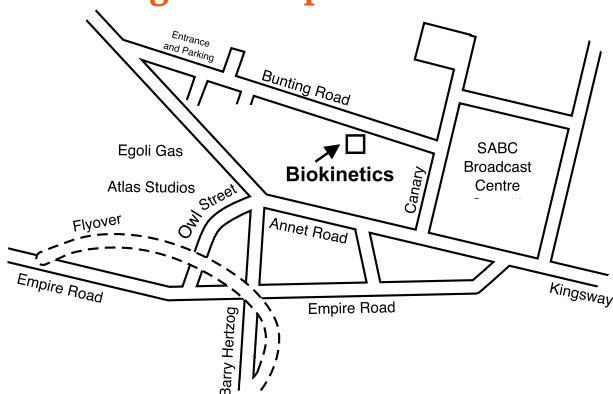
E-mail: lindiweg@uj.ac.za

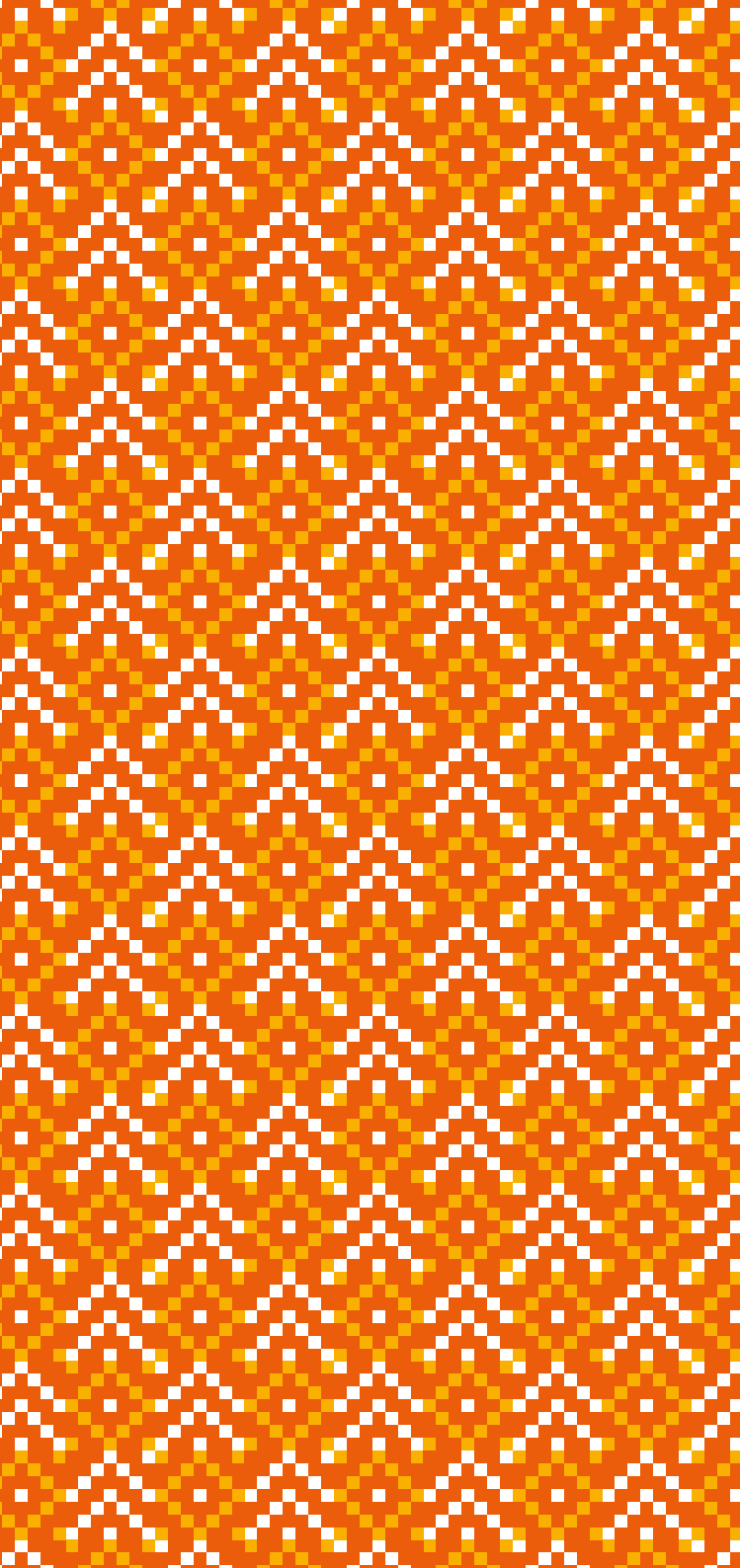


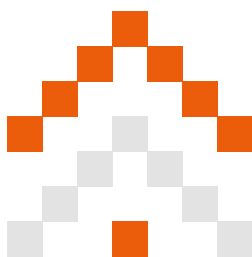
Doornfontein Campus



Bunting Rd Campus







www.uj.ac.za/health

Twitter: **@HealthSciencesUJ**

Facebook: **Health Science@UJ**