

Welcome. Siyakwemukela. Welkom. Re a le amogela.

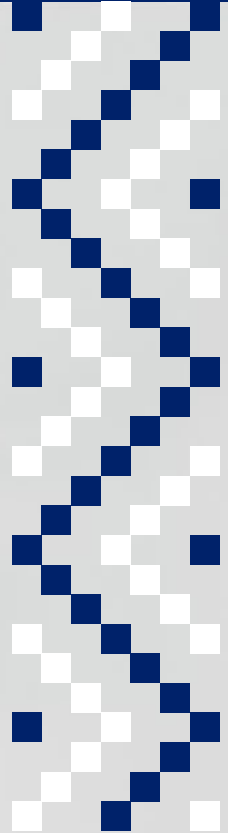
First Year Seminar (FYS) Programme 2023



College of Business and Economics (CBE)

Soweto Campus

Diploma in Financial Services Operations (D34F9Q)



The Future
Reimagined

Your Name

Your Student Number

Your ID Number

Dear First Year Student

The University of Johannesburg welcomes you!

The First Year Seminar (FYS) is compulsory for all students and it is designed to orientate students into the new university environment.

Please attend the programme on the Campus at which you will be studying. We encourage you to take advantage of this opportunity and all the resources the university has to offer to ensure that your transition into higher learning is effortless.

We wish you have an informative and enjoyable First Year Seminar and much success in your undergraduate studies.

IMPORTANT DATES FOR 2023	
University re-opens for support employees	3 January 2023
University re-opens for academic employees	12 January 2023
Academic classes start for returning and first-year students	13 February 2023
Mid-Semester Recess (First semester)	1 to 10 April 2023
Lecturing Timetable Switches	The lecturing timetable of a Monday will be followed on Friday 14 April and on Wednesday 3 May 2023
Study period for students	27 to 31 May 2023
First Semester – Final Assessment	1 to 23 June 2023
University Holidays	20 March and 28 April 2023

College of Business and Economics (CBE)

FYS Programme 2023

SCHOOL OF MANAGEMENT (SoM)			
Department of Finance and Investment Management			
SOWETO CAMPUS (SWC) (COORDINATORS: Mr T Gandanhamo)			
Diploma in Financial Services Operations (D34F9Q)			
MONDAY 6 FEBRUARY 2023			
Students to self-study and work through the UJ First Year Orientation Module on Blackboard either on campus accessing the Wi-Fi or off campus using your own data			
TUESDAY 7 FEBRUARY 2023			
Students to self-study and work through the UJ First Year Orientation Module on Blackboard either on campus accessing the Wi-Fi or off-campus using your own data			
WEDNESDAY 8 February 2023			
TIME	ACTIVITY	PRESENTER	VENUE
08:00 – 10:00	Learning with Technology	CAT Personnel	Bram Fischer 105
10:00 – 10:30	BREAK		
10:30 – 10:45	Welcome to our First Year Students	Departmental Personnel	Bram Fischer 105
10:45 – 11:00	HOD Introduction and Welcome	Melany Lotter	
	Icebreaker	Departmental Personnel	
11:00 – 11:30	Library walk about Surnames A – M	Librarian	SWC Library
11:30 – 12:00	Library walk about Surnames M – Z		
12:00 – 12:30	BREAK		
12:30 – 13:00	About Peer Mentoring and Tutors	Departmental Personnel	Bram Fischer 105
13:00 – 13:45	Amazing Race		
13:45 – 15:15	Mathematics for Diploma students	Departmental Personnel	
15:15 – 15:30	1st Year Lecturer's Welcome	Departmental Personnel	
15:30 – 15:45	Days reflection and discussion FYS Online Module Thursday 9 February programme	Departmental Personnel	

THURSDAY 9 FEBRUARY 2023

GROUP THREE -@ A Les G01, APK
Department of Commercial Accounting
SCHOOL OF MANAGEMENT (SoM)

08:00 – 08:10	Welcome	College Representative	A Les G01
08:10 – 08:55	Students Affairs	Students Affairs Personnel	
08:55 – 09:40	Student Finance	Student Finance Personnel	
09:40 – 10:10	Library Presentation	Librarian	
10:10 – 11:10	BREAK		
11:10	GROUP THREE students to meet at A Les G01 for a campus tour and the remainder of the days programme	CBE Peer Mentors	A Les G01

GROUP THREE – Sanlam Auditorium @ APK
Department of Commercial Accounting
Department of Transport and Supply Chain Management
SCHOOL OF MANAGEMENT (SoM)

TIME	ACTIVITY	PRESENTER	VENUE
12:00 – 12:10	Welcome	College Representative	Sanlam Auditorium Auckland Park Kingsway Campus
12:10 – 12:40	CBE Executive Dean Welcome, overview of the CBE structure and introduction of Vice Dean and School Directors	Prof Lungile Ntsalaze	
12:45 – 13:00	CBE Academic Administration how to – rules, regulations, and process flow	Maria Motaung Head of College Academic Administration	
13:00 – 13:30	CBE Senior Students Interactive Conversation	CBE Students	
13:30 – 14:00	Value of the information pack	FYO Marshal	

FRIDAY 10 FEBRUARY 2023

Students to self-study and work through the UJ First Year Orientation Module on Blackboard either on campus accessing the Wi-Fi or off-campus using your own data



The **UJ Disability Unit** provides technological, academic and psychosocial support to students with disabilities on all four UJ Campuses.

Email: disabilityunit@uj.ac.za ■ Tel: 011 559 3745

Visit: www.uj.ac.za/PsyCaD ■ www.facebook.com/PsyCaD

Lectures commence on Monday 13 February 2023.