

Welcome. Siyakwemukela. Welkom. Re a le amogela.

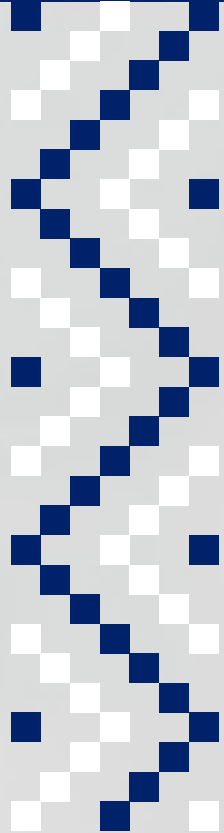
First Year Seminar (FYS) Programme 2023



College of Business and Economics (CBE)

Auckland Park Kingsway Campus

BCom (Transport & Logistics Management) (B34TLQ)



The Future
Reimagined

Your Name

Your Student Number

Your ID Number

Dear First Year Student

The University of Johannesburg welcomes you!

The First Year Seminar (FYS) is compulsory for all students and it is designed to orientate students into the new university environment.

Please attend the programme on the Campus at which you will be studying. We encourage you to take advantage of this opportunity and all the resources the university has to offer to ensure that your transition into higher learning is effortless.

We wish you have an informative and enjoyable First Year Seminar and much success in your undergraduate studies.

IMPORTANT DATES FOR 2023	
University re-opens for support employees	3 January 2023
University re-opens for academic employees	12 January 2023
Academic classes start for returning and first-year students	13 February 2023
Mid-Semester Recess (First semester)	1 to 10 April 2023
Lecturing Timetable Switches	The lecturing timetable of a Monday will be followed on Friday 14 April and on Wednesday 3 May 2023
Study period for students	27 to 31 May 2023
First Semester – Final Assessment	1 to 23 June 2023
University Holidays	20 March and 28 April 2023

College of Business and Economics (CBE)

FYS Programme 2023

SCHOOL OF MANAGEMENT (SoM)			
Department of Transport and Supply Chain Management (TSCM)			
AUCKLAND PARK KINGSWAY CAMPUS (APK) (COORDINATOR: Hemisha Makan)			
BCom (Transport & Logistics Management) (B34TLQ)			
MONDAY 6 FEBRUARY 2023			
Students to self-study and work through the UJ First Year Orientation Module on Blackboard either on campus accessing the Wi-Fi or off-campus using your own data			
TUESDAY 7 FEBRUARY 2023			
TIME	ACTIVITY	PRESENTER	VENUE
08:00 – 08:15	Welcome to our First Year Students	Departmental Personnel	B Les 104
08:15 – 08:30	HOD Introduction and Welcome	Prof Noleen Pisa	
08:30 – 09:00	Brief overview of the Department as a discipline and practice	Departmental Personnel	
09:00 – 09:30	Library walk about: Surnames A – M	Librarian	APK Library
09:30 – 10:00	Library walk about: Surnames N – Z	Librarian	APK Library
10:00 – 12:00	Learning with Technology	CAT Personnel	C Ring 303 C Ring 307 E Ring 207
12:00 – 12:30	BREAK		
12:30 – 13:00	Timetables and introduction to the learner guide	Departmental Personnel	B Les104
13:00 – 13:30	Guest Speaker from Industry	Departmental Personnel	
	About Peer Mentoring and Tutors	Departmental Personnel	
13:30 – 14:15	Amazing Race	Departmental Personnel	
14:15 – 14:45	Days reflection and discussion FYS Online Module Thursday 9 February programme	Departmental Personnel	

WEDNESDAY 8 FEBRUARY 2023

Students to self-study and work through the UJ First Year Orientation Module on Blackboard either on campus accessing the Wi-Fi or off-campus using your own data.

THURSDAY 9 FEBRUARY 2023**GROUP THREE @ A Les G01, APK**

Department of Commercial Accounting
Department of Transport and Supply Chain Management
Department of Business Management

08:00 – 08:10	Welcome	College Representative
08:10 – 08:55	Students Affairs	Students Affairs personnel
08:55 – 09:40	Student Finance	Student Finance personnel
09:40 – 10:10	Library Presentation	Librarian
10:10 – 11:10	BREAK	
11:10	GROUP THREE students to meet outside A Les G01 for a campus tour and the remainder of the days programme	CBE Peer Mentors

GROUP THREE – Sanlam Auditorium @ APK

Department of Commercial Accounting
Department of Transport and Supply Chain Management
Department of Business Management

12:00 – 12:10	Welcome	College Representative
12:10 – 12:40	CBE Executive Dean Welcome, overview of the CBE structure and introduction of Vice Deans and School Directors	Prof Lungile Ntsalaze
12:45 – 13:00	CBE Academic Administration how to – rules, regulations and process flow	Maria Motaung Head of College Academic Administration
13:00 – 13:30	CBE Senior Students Interactive Conversation	CBE Students
13:30 – 14:00	Value of the information pack	FYO Marshal

FRIDAY 10 FEBRUARY 2023

Students to self-study and work through the UJ First Year Orientation Module on Blackboard either on campus accessing the Wi-Fi or off-campus using your own data.



The **UJ Disability Unit** provides technological, academic and psychosocial support to students with disabilities on all four UJ Campuses.

Email: disabilityunit@uj.ac.za ■ Tel: 011 559 3745

Visit: www.uj.ac.za/PsyCaD ■ www.facebook.com/PsyCaD

Lectures commence on Monday 13 February 2023.