



UNIVERSITY
OF
JOHANNESBURG

FACULTY OF SCIENCE



Faculty of Science **Career Guide**

CAREER PLAN

Deciding on what you will do with your career once you leave University can be a daunting task. It is a process with a series of choices rather than one decision.

Many people do not have a definitive plan of their career when they leave University. While you are thinking about this, there are some things you can do while you are in university.

Getting to know yourself

This includes knowing

- Your interests,
- Your personality,
- Your aptitude (the things that you are good at) as well as
- Considering your Matric results.

You can start this by looking through the Career Workbook and completing our online questionnaires:

- **Career Workbook:** www.ujcareerwiz.co.za/psycad/resources/
- **PsyCad Online Questionnaires:** www.forms.gle/FGP1LnYwp3QMpafd8

Career counselling can further allow you to begin the process of getting to know yourself.

Research and Exploration

Explore and research possibilities for your chosen career.

- Conduct research from online sources. Find out if your career options need any certification outside of University training, e.g., registration with a Professional Body.
- Ask your lecturers for assistance in meeting professionals in the careers that you are considering.
- Explore opportunities such as job shadowing and vacation work related to the careers you are considering.

Decision-making

Guided by the information you have gathered from the above process; it is now time to decide about what your career path will be. This will help inform the next steps that you will take.

Preparation for the world of work

Once you have decided about what career you would like, you can begin to prepare for the eventuality of entering the job market. You can do this by starting to look at your CV and reviewing what you might need to be able to apply for the kind of jobs you would like.

This would include exploring vacation work or volunteer work to gain some experience. This is a dynamic step that you are constantly involved in. It would also help to look for vacancies in the positions that you would want to have to see the qualifications, skills, and attributes that might be expected from an ideal candidate.

Develop and maintain your strategy

This is the step where you will implement the decision you have made. Look for job opportunities and use all the knowledge you have gained to assess if your decisions and expectations have been realistic and adjust them accordingly.

Attend events such as Career Fairs and Industry Talks to gain more information about the career you have chosen and to keep up to date with the employment trends of the career you have chosen.



CAREER PERSONALITY CHARACTERISTICS

When looking at employing a person, companies look for some general characteristics as illustrated in the figure below:



Source: www.indeed.com/career-advice/finding-a-job/qualities-employers-want

Choosing a career is probably one of the most important choices in life that we make. To be successful and happy in a chosen career, it is important to choose a career where you will be around people that are similar to you. It is further important to identify a career environment that will allow you to use your skills and abilities, and express your attitudes and values, while taking on enjoyable problems and roles.

SCIENCE ACADEMIC PROGRAMMES

■ Diploma (Dip) in:

- Analytical Chemistry
- Biotechnology
- Food Technology

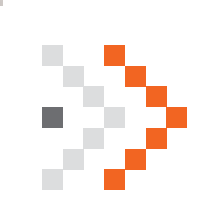
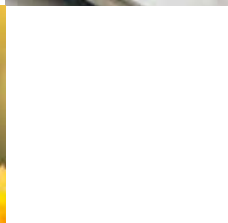
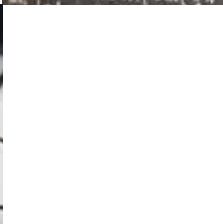
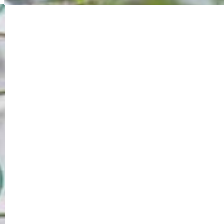
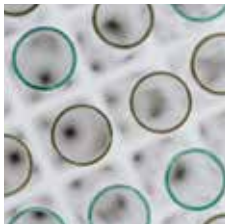
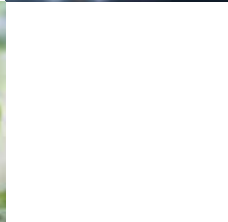
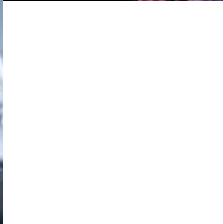
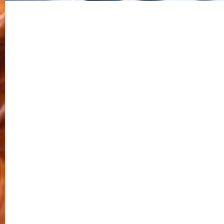
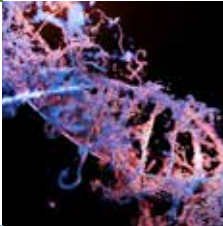
■ Advanced Diploma in:

- Biotechnology
- Food Technology
- Analytical Chemistry

■ BSc Degrees in:

- Applied Physics
- Information Technology
- Life and Environmental Sciences
- Mathematical Sciences
- Physical Sciences





TYPICAL CAREERS

Below are some of the typical careers that people with a Social Science Degree could consider. Keep in mind that your Majors in a particular Degree would determine which of these careers you could consider. Also note that, in some instances, post-graduate qualifications are required for some of these Degrees.

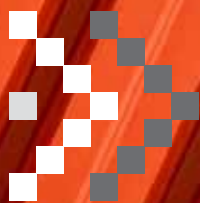
- Actuary
- Analyst Programmer
- Biostatistician
- Biotechnologist
- Botanist
- Business Analyst
- Cartographer
- Chemical Analyst
- Clinical Biochemist
- Coastal Geologist
- Computer Network Architect
- Computer or Information Research Scientist
- Computer Programmer
- Computer Security Specialist
- Computer System Designer
- Computer Systems Analyst
- Data Analyst
- Data Scientist
- Economist
- Eco-tourism guide / manager
- Embedded Programmer
- Environmental consultant
- Epidemiologist
- Food Scientist and Technologist
- Forensic Investigator
- Geographer
- Geo-hydrologist
- Geologist
- Insurance Risk Manager
- Internet Consultant
- Internet Developer
- IT Administrator
- IT Manager
- Laboratory manager
- Lecturer
- Mathematician
- Medical Scientist
- Meteorologist
- Microbiologist
- Network Administrator
- Network Engineer
- Network or Computer Systems Administrator
- Pharmaceutical Engineer
- Physicist
- Researcher
- Risk Analyst
- Seismologist
- Software Developer
- Statistician
- Urban or Regional Planner
- Virtual Reality Designer



COMPANIES

Remember that big companies and major corporations have multiple departments and divisions, so they do not only employ people in their area of speciality. For example, banks don't only employ people with a commerce qualification, they employ Psychologists, Psychometrists, HR specialists, etc. It is therefore important to look widely when you are looking for a job. Below you find a list of examples of companies that employ a wide range of people with different qualifications:

- Allan Gray
- Analytical laboratories
- Anglo American
- Anglo American Platinum
- Anglo American-Kumbo Iron Ore
- Anglo Coal
- AngloGold Ashanti
- Aspen Pharmacare
- BHP Billiton
- City of Cape Town
- City of Johannesburg
- Clover
- Coca-Cola South Africa
- CSIR
- DAFF
- De Beers
- Department of Health
- DHET
- Discovery
- DRDLR
- DST
- Engen Petroleum
- Environmental Management Companies
- Eskom
- Exxaro
- First National Bank
- Gold Fields
- Google
- IBM South Africa
- Investec
- Johnson & Johnson
- L'Oréal Group
- Medi-Clinic Southern Africa
- Microsoft
- National Health Laboratory Services (NHLS)
- Nedbank
- Nestlé South Africa
- Network Healthcare (Netcare)
- PetroSA
- Pfizer Laboratories
- Rand Water
- Sasol
- Shell South Africa
- South African Airways (SAA)
- South African Breweries (SAB)
- Standard Bank
- Statistics South Africa
- Telkom
- Tiger Brands
- Transnet
- Unilever
- Woolworths



www.uj.ac.za/science