

**Industrial policy for prematurely
deindustrialized economies after
the Covid-19 pandemic crisis:
Integrating economic, social and
environmental goals with policy
proposals for Brazil**

André Nassif and Paulo César Morceiro

SARChI Industrial Development Working Paper Series

WP 2022-08

May 2022



Industrial policy for prematurely deindustrialized economies after the Covid-19 pandemic crisis: Integrating economic, social and environmental goals with policy proposals for Brazil

DSI/NRF SOUTH AFRICAN RESEARCH CHAIR IN INDUSTRIAL DEVELOPMENT

André Nassif

Paulo César Morceiro

SARChI Industrial Development Working Paper Series

WP 2022-08

ISBN 978-1-77630-399-1

May 2022

About the South African Research Chair in Industrial Development (SARChI-ID)

The DSI/NRF South African Research Chair in Industrial Development conducts research, builds capacity and undertakes public and policy engagement in the field of industrial development. Activities focus on research projects; training and supervision of graduate students; hosting postdoctoral fellows and research visitors; and various projects, often in conjunction with partners, such as conferences, workshops, seminars, training courses, and public and policy engagements. SARChI Industrial Development is hosted at the University of Johannesburg, where it operates as a centre located in the College of Business and Economics.

Funding acknowledgement

The South African Research Chairs Initiative (SARChI) was established in 2006 by the then Department of Science and Technology (DST), now known as the Department of Science and Innovation (DSI), and the National Research Foundation (NRF). The Chairs are designed to attract and retain excellence in research and innovation at South African public universities. The funding support of the DSI and the NRF through Grant Number 98627 and Grant Number 110691 for the South African Research Chair in Industrial Development has made this working paper series possible.

Recommended citation

Nassif, A., and Morceiro, P.C. (2022). Industrial policy for prematurely deindustrialized economies after the Covid-19 pandemic crisis: Integrating economic, social and environmental goals with policy proposals for Brazil. SARChI Industrial Development Working Paper Series WP 2022-08. SARChI Industrial Development, University of Johannesburg.

Disclaimer

The Working Paper series is intended to stimulate policy debate. Working papers express the views of their respective authors and not necessarily those of the South African Research Chair in Industrial Development (SARChI-ID), the University of Johannesburg (UJ), the Department of Science and Innovation (DSI) or the National Research Foundation (NRF).

Working Papers can be downloaded from <https://www.uj.ac.za/faculties/college-of-business-and-economics/schools/school-of-management/south-african-research-chair-in-industrial-development/working-paper-series/> in PDF (Adobe Acrobat) format.

Abstract

Deindustrialization has not equally affected countries worldwide. In developed countries, deindustrialization is driven by technological progress and manifests in the drop of the share of manufacturing employment in total employment. In most developing countries, though, deindustrialization has prematurely accelerated. Most empirical studies calculate the degree of premature deindustrialization based on aggregate calculations of the share of manufacturing value added in total GDP or manufacturing employment in overall employment. By not capturing the sub-sectoral levels, these studies overlook important information. Indeed, recent studies show that, at a sub-sectoral level, the most innovative manufacturing groups like machine and equipment and science-based manufacturing sub-sectors are not deindustrializing in both value added and employment shares. However, their contribution to employment generation is relatively minor compared to the labour-intensive and scale-intensive manufacturing sub-sectors. To reverse the deep premature deindustrialization from which many developing countries in Latin America and elsewhere are suffering, it is, thus, essential to understand the manufacturing industry at the sub-sectoral level. Since manufacturing still matters, one of the primary roles of industrial policy is to combine instruments to reverse premature deindustrialization. In line with the Neoschumpeterian national innovation system approach, industrial policy is viewed systemically and conceived as long-term mission-oriented national plans. Therefore, it must be connected and harmonized with the other economic and social spheres, such as science and technology, education and training, physical and human infrastructure, and, last but not least, the macroeconomic policies. We provide several descriptive statistics data and empirical simulations on overall employment and tech and green jobs from an increase in final demand with the input-output methodology. From this evidence, we suggest an industrial policy for Brazil after the Covid-19 pandemic crisis by identifying missions and priorities oriented to (i) reindustrialization; (ii) innovation and the creation of dynamic comparative advantages; (iii) generating formal jobs; (iv) reducing social inequality; (v) engaging in the digital economy; and (vi) gradually replacing high carbon dioxide (CO₂) emissions technologies with lower ones. Since all these missions are justifiable with theoretical analysis and empirical evidence, they cannot be considered excessive. Indeed, it is Brazil that faces many challenges. We hope that the policy suggestions are helpful for similar developing countries that have faced premature deindustrialization and stagnation in the last decades.

Keywords: premature deindustrialization; economic development; industrial policy; Brazil.

JEL classification: O14; O25; O29; O38.

About the Authors

André Nassif, Department of Economics, Fluminense Federal University, Brazil. Email: andrenassif@id.uff.br.

Paulo César Morceiro, South African Chair in Industrial Development, University of Johannesburg, South Africa. Email: paulo.morceiro@alumni.usp.br.

Acknowledgements

Support for this research was received under the project 'Community of Practice in Industrialisation and Innovation' (grant number 110691), hosted by the DSI/NRF South African Research Chair in Industrial Development (grant number 98627), University of Johannesburg.

Table of Contents

1. Introduction.....	1
2. What do we know about industrialization, premature deindustrialization, and stagnant economies?.....	4
3. The case of Brazil: main problems and empirical simulations	8
3.1 Identifying Brazil's main problems.....	8
3.2 Empirical simulations on employment: overall, tech and green jobs	20
3.2.1 Data and methodological procedures	21
3.2.2 Simulation results	22
4. A mission-oriented industrial policy proposal for Brazil.....	27
4.1 Wide-ranging priority missions.....	28
4.2 Target sub-sectors linked to priority missions	30
5. Conclusion	32
6. References.....	35
7. Appendix 1: Classification adopted	40

List of Tables

Table 1: Manufacturing and GDP growth per decade (1981-2020; in %).....	13
Table 2: Sectoral share of GDP in Brazil (2000-2018 selected years; at 2015 constant prices in (%))	14
Table 3: Sectoral share of total employment in Brazil (2000-2018 selected years, in %)	14
Table 4: Formal employment share in total employment in Brazil Selected years from 2010, in (%)	15
Table 5: Poverty headcount ratio in Brazil and World Selected years from 1981 (% of the population) (\$ in 2011 PPP).....	16
Table 6: Sectoral share of goods' total exports in Brazil Selected years from 1990-2020, in %	18
Table 7: Sectoral share of goods' total imports in Brazil Selected years from 1990-2020, in %	19
Table 8: Trade balance of total goods in Brazil, Selected years from 1990-2020, in millions of US\$	19
Table 9: Direct and indirect impact resulting of an increase of US\$ 10 million on the Brazilian subsectors' final demand	24
Table 9 (Continuation): Direct and indirect impact resulting of an increase of US\$ 10 million on the Brazilian subsectors' final demand	25
Table 10: Main industrial policy missions	28

List of Figures

Figure 1: Brazil's real GDP growth (1950-2020, in logarithms)	9
Figure 2: Average growth rates of aggregate labour productivity in Brazil (1950-2020; in %	10
Figure 3: Labour productivity in Brazil and selected countries in comparison with the U.S. .	10
(1950-2018; in index numbers; US labour productivity = 100)	10
Figure 4: Manufacturing value added share (% of GDP) in Brazil, 1950-2020 (at 2015 constant prices)	12
Figure 5: Manufacturing employment share in total employment in Brazil by three different databases (1940-2018; in %)	12
Figure 6: Brazil's Gini index, 1981-2019	16
Figure 7: Geographic distribution of population in Brazil 1985-2018 (in %).....	17
Figure 8: GDP per capita of the regions of Brazil 1985-2018 (in 2017 PPP US dollars)	17

1. Introduction

Since the 1970s, the global economy has changed, being driven by radical technological revolutions, like the information and communication industries revolution and, more recently, the so-called Industry 4.0 (or digital) revolution. However, even though these new technologies have increased the role of tradable services in both the productive structure and global trade, it is misleading to expect the world will be transformed into a service economy. As Bianchi and Laboury (2018: 51, boldface ours) point out, this fourth industrial revolution (that is, the digital revolution), driven by robotics, artificial intelligence, big data, the internet of things, biotechnologies, genomics, new material, and renewable energy, is characterized by the "**real integration** [not the separation] of science and production, and **not just interaction** as in the previous industrial revolutions." This means that the role of manufacturing as an engine of growth could be reduced but not eliminated since manufacturing will continue acting as the primary source of generation and diffusion of technical progress (Aiginger and Rodrik, 2020). Moreover, although new technologies are labour-saving, the actual impact of the digital revolution on employment is not so evident in the long run.

What is evident, however, is that deindustrialization has not equally affected countries worldwide. In developed countries, deindustrialization is driven by technological progress and has manifested in the drop of the share of manufacturing employment in total employment. Yet, in most developing countries, deindustrialization has prematurely accelerated. Its explanatory factors vary from the high global competition (especially from China) to an industrial policy that is either inappropriately coordinated or lacking coordination all together with other policy spheres (Rodrik, 2016). For the developing economies that have not suffered from premature deindustrialization, that Asian countries provide a good example, where the share of manufacturing value added increased from 13.5% to 19.1% on average between 1970 and 2017. In contrast, in Latin American economies, this share considerably decreased from 18.6% to 13.9% in the same period. Premature deindustrialization measured as the share of manufacturing employment in total employment has also shown a similar behaviour: while this share rose from 11.9% to 14.5% on average in Asian countries in the period 1970-2017, it significantly dropped from 15.5% to 11.9% in Latin America in the same period (Araújo et al., 2021: 2).

Although many developing countries in Latin America and elsewhere are suffering from a deep premature deindustrialization, this situation is not irreversible. Tregenna and Andreoni (2020) recognize that this phenomenon represents a threat to the economic development of low and middle per capita income economies because the manufacturing sector still acts as an engine of growth. However, they argue that most empirical studies calculate the degree of premature deindustrialization based on aggregate calculations of the share of manufacturing value added in total GDP or manufacturing employment in overall employment. Since the pace of labour productivity growth and employment creation varies within the manufacturing sector, the authors compare the manufacturing pattern by technology level in 1993 and 2010. They show empirical evidence that high-tech

manufacturing sub-sectors are "monotonically increasing their shares of both employment and GDP." This result suggests that "at the increasing level of economic development (measured by GDP per capita), the cross-countries benchmark trajectory is one of continuous industrialization." They also conclude that medium-tech manufacturing sub-sectors show a small but not a dramatic drop in their value added share; in contrast, their employment share indicates some tendency of stabilization. Dosi, Riccio, and Virgilitto (2021) reach similar results using different methodologies and regressions. They conclude that the most innovative manufacturing groups (basically machine and equipment and science-based manufacturing sub-sectors) are those exhibiting increases in both value added and employment shares. However, paradoxically, their contribution to employment generation is relatively minor in comparison to the labour-intensive and scale-intensive manufacturing sub-sectors.

Brazil is one of the developing countries that has been most severely damaged by premature deindustrialization in the last decades. The share of manufacturing value added in total GDP (at 2015 constant price) decreased from 21.1% to 11.9% between 1980 and 2020 (Morceiro, 2021).¹ As to the share of the manufacturing employment in total employment in Brazil, the result has traditionally been disappointing. Nassif et al. (2020) document an almost continuous trend of transferring a significant share of the labour surplus from traditional agriculture to services of low-skilled labour and low productivity (e.g., retail and personal services) throughout the industrialization in Brazil in the period 1950-1980.² According to the National Household Sample Survey (PNAD-IBGE/Annual Series), the highest labour share absorbed by the Brazilian manufacturing industry, corresponding to 16.2%, was reached in 1986. In 2018, this share had reduced to only 10.8%.³

This behaviour contradicts many of the economic development experiences of late-industrializing countries in Asia after World War II, which are marked by the absorption of a large share of labour surplus from the low labour productivity of agriculture,⁴ as predicted by the Lewis model (Lewis, 1954). The reasons for the historically low capacity of the manufacturing industry to create jobs in the Brazilian economy vary from the lack of complete integration of the local markets to high regional and social inequalities (Furtado, 1961; 1992:174-189).

We reject Gill and Kharas's hypothesis of the so-called middle-income trap. According to this hypothesis, most developing countries tend to stagnate as soon as they reach a level of per capita income close to the world average due to their inability to increase labour productivity in most manufacturing industries, be it labour-intensive (due to the rise in relative wages), or the medium and high-tech ones (due to their low economies of scale and slow innovation).

¹ These series were carefully calculated at basic prices, by adjusting to the 2010 System of National Accounts methodology by the Brazilian Institute of Geography and Statistics (IBGE in Portuguese), correcting for methodological changes and the financial dummy.

² See Nassif et al. (2020), especially Figure 2 on page 7.

³ This data is provided by the 2020 System of National Accounts (SNA-IBGE), whose methodology is close to the PNAD's.

⁴ For empirical evidence, see Amsdem (2001), Palma (2005), Rodrik (2016) and Araújo et al. (2021).

Bulman, Eden, and Nguyen (2018:5) criticize this hypothesis, showing that "countries that grow fast continue to grow fast, and they do not get 'stuck' at any particular middle-income level." They add: "This suggests that becoming 'trapped' in some middle-income level is not inevitable."

Since manufacturing still matters, one of the primary roles of industrial policy is to combine instruments to reverse the premature deindustrialization observed in many developing countries, including Brazil. But in line with the Neoschumpeterian national innovation system approach, industrial policy is viewed systemically and conceived as long-term mission-oriented national plans (Mazzucato, 2021). Therefore, it must be connected and harmonized with the other economic and social spheres, such as science and technology, education and training, physical and human infrastructure, and, last but not least, the macroeconomic policies.

Mazzucato (2021) proposes a mission-oriented approach since "partnerships between the public and private sectors solve key societal problems." A mission-oriented industrial policy is nothing but a long-term national development plan with directions, priorities, and instruments to achieve economic and social goals. In Mazzucato's (2021: 8) words:

"It means choosing directions for the economy and then putting the problems that need solving to get there at the centre of how we design our economic system. It means designing policies that catalyze investment, innovation, and collaboration across a wide variety of actors in the economy, engaging both business and citizens."

Regarding Brazil, although its economy has suffered from stagnation since the 1980s, the Covid-19 pandemic crisis has evidenced the weakness of its labour market, a market characterized by high informality and disguised unemployment, as well as extreme social inequality. In addition, there has also been a growing consensus globally for the need to reduce greenhouse gas emissions. After the pandemic, industrial policy will thus have to deal with four challenges: first, provide mechanisms to reindustrialize the Brazilian economy by absorbing unemployed and informal workers into the formal labour market; second, boost labour productivity by engaging in the digital revolution and improving education and training; third, reduce the country's extreme social inequality; and fourth, replace high CO2 emitting technologies with low carbon options.

The paper has three goals: (i) analyze reindustrialization as an opportunity to integrate economic, social, and environmental goals in developing countries, with particular reference to Brazil; (ii) provide several descriptive statistics data on Brazil's productive structure and trade patterns, as well as empirical simulations on overall employment and different types of jobs (mainly, tech and green jobs) from an increase in final demand with the input-output methodology; and (iii) based on the theoretical analysis and these empirical results, suggest industrial policy for Brazil as a mission-oriented national plan by identifying the main missions and addressing the main sub-sectoral priorities. We hope that the policy suggestions are helpful for similar developing countries that have faced premature deindustrialization and stagnation in the last decades.

The remainder of this paper is organized as follows. Section 2 briefly discusses why the recovery and diversification of the manufacturing sector still matter for accelerating technical progress and the catching-up trajectory in prematurely deindustrialized economies. This section also analyses how the current digital revolution challenges developing countries' governments to conciliate the promotion of labour-saving manufacturing industries with the necessity of employment recovery. Section 3 presents the case of Brazil by discussing reindustrialization as an opportunity to integrate the economic, social, and environmental agenda after the Covid-19 pandemic crisis. We offer this analysis in two steps: firstly, we identify the set of economic, social, and environmental problems through a brief history and descriptive statistics data; secondly, we estimate some empirical evidence on the impact of final sub-sectoral demand on the capacity to generate overall employment as well as medium & high-tech skilled jobs and green jobs. Section 4 uses these results to suggest a set of proposals for mission-oriented industrial policy and choose the priorities at the disaggregated sectoral level. Finally, Section 5 draws the main conclusions.

2. What do we know about industrialization, premature deindustrialization, and stagnant economies?

The literature on economic development discusses the role of the manufacturing sector as an engine of growth. However, this particular role is not present in the neoclassical framework, for which all sectors work with technologies subject to constant returns to scale. Moreover, the neoclassical approach implicitly incorporates the hypothesis that all sectors produce goods with the same income elasticity of demand. From the structuralist view, in contrast, at least two empirical observations make the manufacturing industry, differently from the traditional primary and tertiary sectors, act as an engine of growth: (i) it is the primary source of creation and diffusion of technical progress in the economy as a whole; (ii) as a result of the cumulative effects of technical progress, it is subject to static and dynamic returns to scale (Marx, 1867; Young, 1928, Kaldor, 1966, 1967; Dosi, Pavitt and Soete, 1990).

Based on the historical evolution of capitalism since the Industrial Revolution, in the eighteenth century, the structuralist tradition argues that economic development is marked by the following stylized facts or empirical regularities: (i) The transition of an underdeveloped to a developed economy involves a process of structural change through which labour surpluses are shifted from the sector of lower labour productivity (mainly traditional agriculture) to the higher one (manufacturing) [Lewis, 1954]; (ii) As this latter sector has a high potential to create and spread technical progress throughout the economy, it commands the average growth rates of aggregate labour productivity and long-term economic growth (Kaldor, 1967, Prebisch, 1949, 1951); (iii) As this process is accompanied by an intense urbanization and a growing demand for services (transportation, retail, personal and governmental services, etc.), part of the labour shifting is absorbed by the service sector; (iv) Even when the economy reaches a per capita income level close to the average of the world economy, it continues showing significant labour productivity gaps across sectors, notwithstanding that such gaps tend to decrease over time (Kaldor, 1967); (v) As the labour surplus is eliminated, the overall labour productivity growth, rather than the structural

change mechanism, depends on the capacity of each sector to generate or incorporate technical progress from both manufacturing and high-tech services, such as machines & equipment, robots, artificial intelligence and so on (McMillan and Rodrik, 2011).

The debate on deindustrialization revolves around whether or not the manufacturing sector loses its capacity to act as an engine of growth when a continuing drop of its value added share in total GDP or its labour share in overall employment is observed. Indeed, deindustrialization goes back to Kaldor's (1966) investigation on the causes of sluggish economic growth in the United Kingdom through the 1960s.

The debate gained momentum when Rowthorn (1994), based on a sample of 70 countries, interpreted deindustrialization (measured as the share of manufacturing employment in total employment) as a natural phenomenon that followed an inverted U-shaped curve: it initially rises as per capita income increases, then reaches a maximum, and finally drops after the per capita income hits a turning point. Later, Rowthorn and Ramaswamy (1999), based on a sample of 18 industrialized countries for the period 1963-1994, showed that deindustrialization in these countries manifested from a drop in the manufacturing employment share rather than in the value added share. By accepting that the manufacturing sector still works as an engine of growth, they point out that its higher labour productivity growth provokes a decrease in relative prices of manufacturing goods, sustaining, therefore, the demand stimulus for them. In other words, at least in advanced countries, natural deindustrialization is predominantly understood as a result of technological progress.

In addressing the issue of premature deindustrialization, Palma (2005) and Dasgupta and Singh (2006) showed that deindustrialization does not appear naturally in developing countries. In his seminal paper, Palma (2005),⁵ based on a sample of 105 countries in the period 1970-1998, shows empirical evidence that the average per capita income turning point from which countries entered into deindustrialization drastically reduced from US\$20,645 to US\$8,691 between 1980 and 1998 (at PPP 1985 US dollar). Thus, Palma argues that since the early 1990s many developing countries (especially in Latin America) have prematurely deindustrialized (that is, before reaching a higher per capita income turning point) not because of the impact of technological progress or globalization. Instead, this phenomenon has prematurely occurred because of the rapid liberalizing economic reforms (trade liberalization, financial and credit markets, external capital openness, etc.) that were adopted as "shock therapy" (Lin and Chang, 2014). Moreover, as Palma (2005) points out, most Latin American governments, differently from Asia's, have replaced an agenda prioritizing a development strategy towards the catching up for one concentrated in price stabilization.⁶

By recognizing the role of manufacturing as an engine of growth, Felipe et al. (2019:140), in a paper entitled "Manufacturing matters, but it is the jobs that count," ask the critical question of "how success in industrialization should be measured — is it more important to produce large amounts of manufacturing value added, or to create manufacturing jobs?" They remind

⁵ The seminal credit must be awarded to J. G. Palma, who published the quoted reference as a working paper in 2004.

⁶ See also Palma (2019).

us that the mechanisms through which the manufacturing sector boosts and sustains productivity and economic growth over time are activated by both manufacturing value added and employment growth dynamics. However, the authors (op.cit: 141) point out that "in a world of export-led industrialization, manufacturing employment is likely to be a stronger predictor of prosperity than manufacturing output." To test this hypothesis, they provide several regressions for manufacturing value added and employment shares of 63 countries in the period 1970-2010 and show the following conclusions:

"i) All of today's rich non-oil economies enjoyed at least 18% manufacturing employment shares in the past; ii) They often did so before becoming rich; iii) Manufacturing peaks at lower employment shares today (typically below 18%), than in the past (often over 30%); iv) Compared with employment, output shares are weak predictors of prosperity, and are under less pressure; and v) Late developers' manufacturing employment shares peak at much lower per capita incomes than previous studies have shown".

Felipe et al. (2019) does not explain, however, why some developed countries were able to keep the share of the manufacturing value added in total GDP since the 1960s (e.g., the United States),⁷ and why several Asian countries increased both manufacturing and employment shares between 1970 and 2017, as already shown. Moreover, a new strand of research that has emerged in the past few years has explored sub-sectoral heterogeneity and different kinds of deindustrialization.

Tregenna and Andreoni (2020) are the first to present empirical evidence on deindustrialization using a manufacturing sub-sectoral analysis from a sample of 67 countries. They show that while the inverted U-shaped curve is evident for low and some medium-tech sub-sectors, high-tech manufacturing is the group that does not follow this behaviour. Instead, this latter group shows a rise in both manufacturing value added and employment shares, suggesting that "the more specialized, sophisticated and high-tech a manufacturing activity, the less concave is its pattern of development, becoming a monotonically increasing line and even a convex curve for very high-tech sub-sectors" (op.cit.: 27). The authors (op.cit: 28) also observe that "this relationship stands even in the case of capital- and robot-intensive sectors such as automotive production, suggesting that premature deindustrialization does not necessarily have to lead to a reduction in employment."

Dosi, Riccio, and Virgilitto (2021) reach similar results using different methodologies and regressions. They show that globalization has accelerated deindustrialization since the early 1990s, while denying that it can be treated as a natural phenomenon driven by income growth and technical progress. In the authors' words (op.cit.: 17):

"First of all, if there were a natural tendency to deindustrialization driven by technical progress, we should have observed a neater anticorrelated pattern between increasing value-

⁷ According to Baily and Bosworth (2014:3), despite the long-standing drop in the US manufacturing employment share, its manufacturing value added share has kept constant in price-adjustment terms since the 1960s. They point out that these trends seem "inconsistent with stories of a recent or sudden crisis in the US manufacturing sector."

added shares and decreasing employment shares. However, this is not what we observe: indeed, the two variables are moving in the same direction in developed and developing countries. Second, some highly innovative sectors, often belonging to the "upstream" aggregate, keep non-reducing or even increasing employment shares as income grows."

Dosi, Riccio, and Virgilitto's paper show sound evidence that there are several varieties of deindustrialization, both on aggregate and sub-sectoral terms. The main contribution of their study is to explore the empirical evidence of deindustrialization at the sub-sectoral level within the Neoschumpeterian and the evolutionary dynamics of innovation and technical progress. As the authors point out, "potato chips" do not have the same dynamic impact of "microchips" on labour productivity and growth dynamics. Therefore, they break down the manufacturing sector into four groups according to Pavitt's (1984) classic taxonomy, which is based on factor and technological content, economies of scale intensity, competitive position on the supply chain, and science and knowledge. These groups are "supplier dominated" (basically natural-resource based and labour-intensive sub-sectors), "scale intensive" (capital intensive industries such as paper, plastics, refined petroleum products, basic metals, and motor vehicles), "specialized suppliers" (machinery and equipment, electrical machinery and other transport equipment), and "science-based" (chemicals, office, and computing machinery, communication equipment, and medical, precision and optical instruments).

By using a broad database for 23 manufacturing industries of 173 countries from 1963 to 2013, Dosi, Riccio and Virgilitto's main findings are as follows:⁸ (i) Not all groups show the typical U-shape curve: the tests corroborate canonical U-shape only for supplier dominated and scale intensive groups, while science-based manufacturing figures out as an exception since it shows a rising trend in both value added and employment shares; (ii) By comparing the tendencies in developed and developing countries, we see that supplier dominated follows a solid trend of deindustrialization, with science-based and specialized suppliers growing both in terms of value added and employment shares; in the case of scale intensive manufacturing, the results suggest a reallocation of production from developed to developing countries in the last decades as both value added and employment shares experience a sharp decline in the former, while the value added shows a vigorous increasing trend in the developing world (the employment share does not vary); and (iii) In conclusion, the most innovative manufacturing groups are those revealing increases in both value added and employment shares, although, paradoxically, their contribution to employment generation is relatively minor in comparison to the supplier dominated and scale intensive ones.

These empirical results have a clear policy implication: the new segments of the service sector associated with the digital economy (robotics, artificial intelligence, big data, internet of things, etc.) may change but do not rule out the role of the manufacturing sector as an engine of growth. This implication means that manufacturing continues to act as a fuel for low and middle per capita income economies to catch up. Several reasons make us support such a perspective. First, manufacturing is responsible for around two-thirds of total private research and development (R&D) in the world and between 53% and 73% of all patents issued in the

⁸ Due to the lack of data for all countries, some results refer to the period 1971-2011.

most innovative countries, such as the United States, Japan, and Germany (Manyika et al., 2012).⁹

Second, as Galindo-Rueda & Verger (2016) documented, manufacturing activities possess most of the technological efforts (measured by the ratio of R&D to value added) among OECD countries.

Third, as Bianchi and Labory (2018) argue, the so-called Industry 4.0 tends to actually integrate with manufacturing throughout the twenty-first century rather than merely interact. Therefore, it is more appropriate to understand the manufacturing sector and the medium and high-tech services as an ecosystem of complex technologies that generate dynamic feedback than isolated activities.

And fourth, both poor and developing countries cannot directly jump to medium and high-tech services without establishing a relatively diversified and competitive manufacturing sector. As Amsden (2001) documented, there is no historical experience in which a country achieved high per capita income without industrialization. Therefore, deindustrializing economies will necessarily have to recover their old manufacturing industry as an additional condition to advance in more sophisticated technologies in manufacturing together with the new services. The reindustrialization of the old manufacturing industry must also gradually replace technologies with high carbon dioxide (CO₂) emissions for lower ones. This necessity is justified not only for ethical but also for economic reasons, since the international community will rightly press for a greener global economy, which will have implications for countries that want to play and position themselves in the international competitive game.

In the late 1960s, Kaldor (1967: 54) stressed that "there can be little doubt that the kind of economic growth, which involves the use of modern technology and eventuates in high real income per capita, is inconceivable without industrialization." Empirical evidence on premature deindustrialization based on sectoral heterogeneity shows that Kaldor's statement continues to be valid even today. We share Aiginger and Rodrik's (2020: 15) theoretical and normative views according to which manufacturing will continue to play its central role in the game of technological change and that "industrial policy is a systemic approach that coordinates innovation, regional policy, and trade policy, with manufacturing at its core while affecting upstream and downstream industries, sectoral change, clusters, and networks."

3. The case of Brazil: main problems and empirical simulations

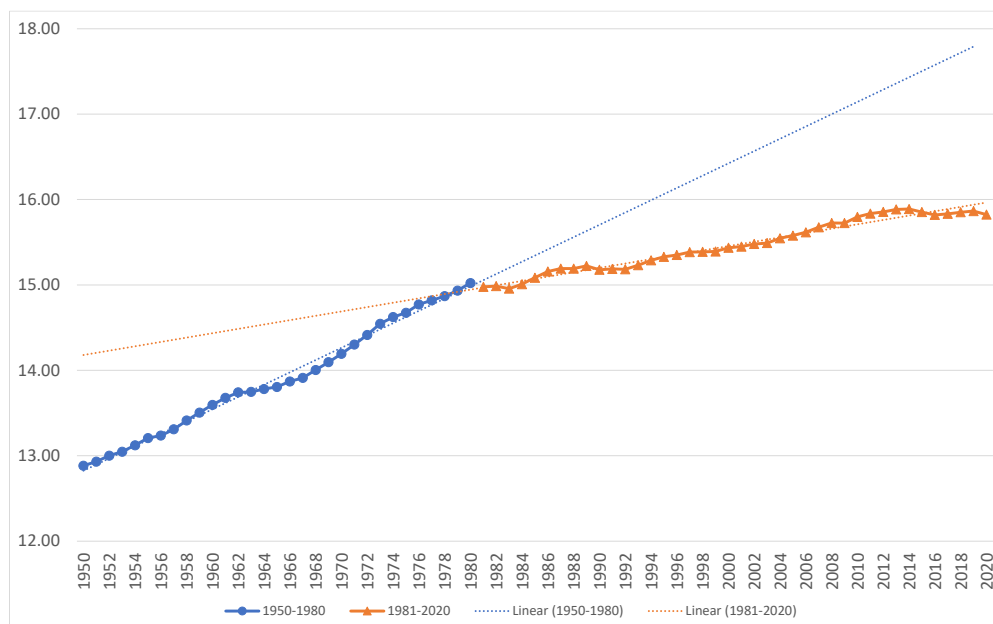
3.1 Identifying Brazil's main problems

Brazil is a clear case of a country that, after following an initial trajectory of catching up between 1950 and 1980, has entered into premature deindustrialization and falling behind since then (Nassif, 2008; Nassif, Feijó and Araújo, 2015). Figure 1 shows the long-term trend

⁹ See also OECD's Analytical Business Enterprise Research and Development database.

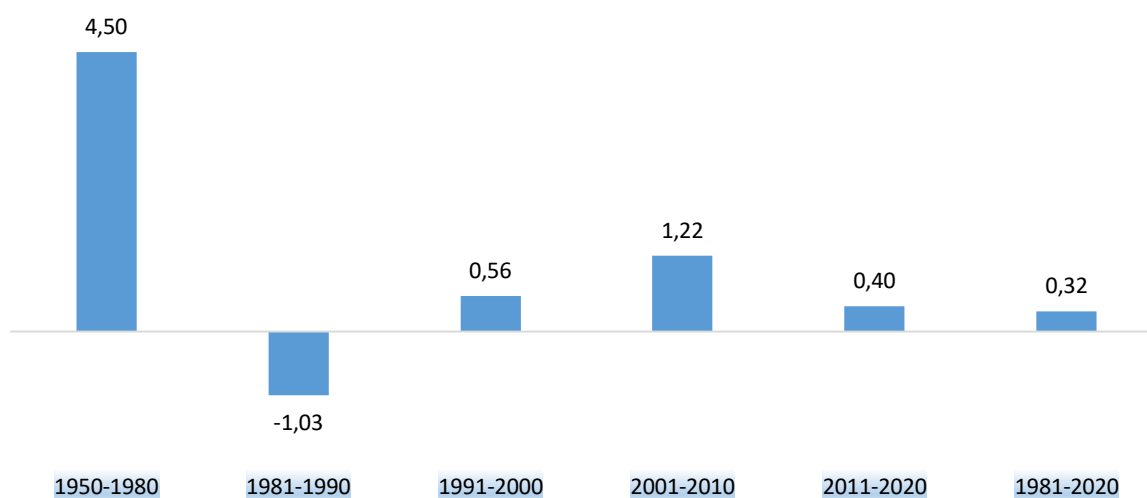
of Brazilian GDP between 1950 and 2020. The much steeper line in the early 1980s marks the beginning of a long period of economic stagnation which has lasted more than four decades.

Figure 1: Brazil's real GDP growth (1950-2020, in logarithms)



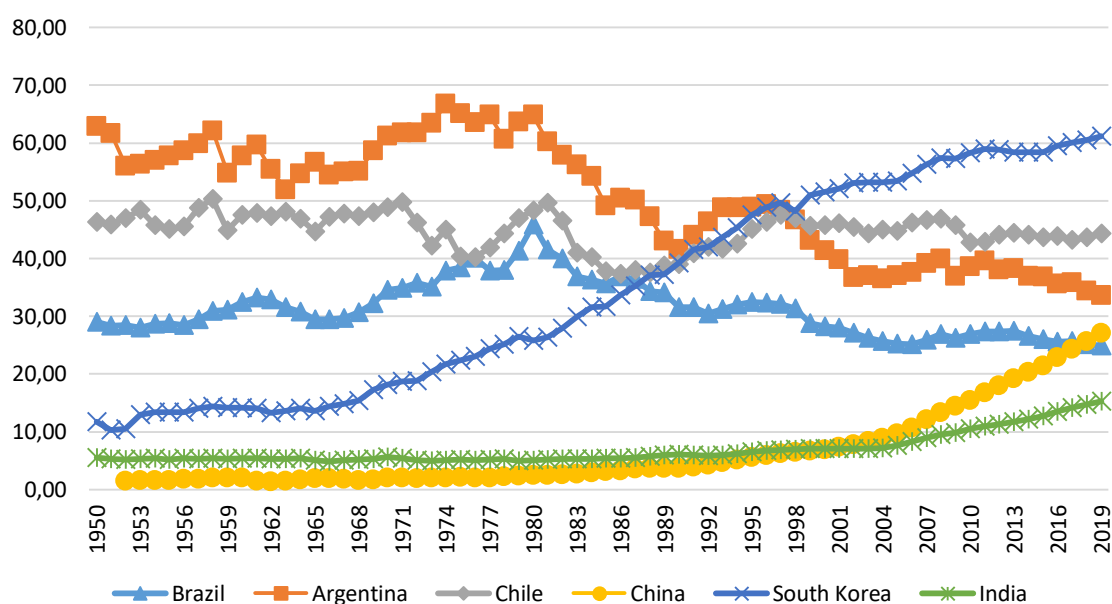
Source: Brazilian Institute of Geography and Statistics (IBGE). Authors' elaboration.

Figures 2 and 3 also depict opposite trajectories of the Brazilian economy in the last seven decades. Labour productivity grew at 4.5% on average between 1950 and 1980, while it showed growth rates near zero in 1981 to 2020 (Figure 2). Figure 3 illustrates the technological gap of selected countries in comparison with the United States. Since Brazil and South Korea engaged in industrial policies for boosting economic development almost simultaneously (Brazil in the early 1950s and South Korea in the early 1960s), it makes more sense to compare both countries' technological trajectories over time. While South Korea has kept an uninterrupted catching-up path since then, Brazil successfully pursued a similar trend only up to 1980. In 2019, the technological gap of the Brazilian economy in relation to the United States was higher (75%) than the one prevailing in 1950 (71%), a clear indicator of Brazil's falling behind. China's economic development from the 1980s on is also an intriguing case to compare with Brazil's. When China established catching up as its central mission, its initial conditions were fairly behind Brazil's. Yet, in 2018, the Chinese relative technological gap was smaller than the Brazilian one.

Figure 2: Average growth rates of aggregate labour productivity in Brazil (1950-2020; in %)

Note: Labour productivity is calculated as the ratio of GDP to total employees.

Sources: Groningen Growth and Development Centre, <https://www.rug.nl/ggdc/productivity/>, for the period 1950-1980; and *Fundação Getúlio Vargas* (FGV-IBRE), for the period 1981-2020, <https://ibre.fgv.br/observatorio-produtividade/artigos/nota-metodologica-dos-indicadores-anuais-de-produtividade-do-0>. Accessed on 29 March 2021.

Figure 3: Labour productivity in Brazil and selected countries in comparison with the U.S. (1950-2018; in index numbers; US labour productivity = 100)

Source: *The Conference Board Total Economy Database* (Adjusted version, April 2019), accessed 15 July 2020. Authors' elaboration.

Brazil's growth (1950-1980) and stagnation trajectories (1981-2020) involve particularities that can be summarized as follows. First, during the import-substitution strategy (1950-1980), governments designed and implemented ambitious industrial policies (National Plans of Development) by conceding domestic protection against imports and increasing and diversifying exports, especially manufactured goods. This left plenty of problems on both the micro and macroeconomic sides: lack of selectivity, high import tariffs, low government compliance, extreme foreign technological dependence, an increase in social inequality on the microeconomic side, and complacency with high inflation rates and external indebtedness on the macroeconomic side. Despite all these problems, the Brazilian economy experienced high dynamic efficiency, expressed by significant growth of real annual GDP (7.5%) and labour productivity, which was largely offset by a static inefficiency of resource allocation.

In contrast, chronic inflation and external debt crises (1981-1994) and the liberalizing economic reforms from the 1990s on marked the period 1981-2020. After the 1990s, particularly, the Brazilian governments have embarked on the set of radical reforms suggested by the Washington Consensus, such as trade liberalization, privatization, financial deregulation, external capital openness, etc., most of which were adopted as "shock therapy." As a result, between 1981 and 2020, the improvement in static efficiency of the Brazilian economy, expressed by the consumers' access to cheaper imported goods, did not translate into higher dynamic efficiency. Consequently, Brazil experienced sluggish economic growth (GDP growth at 2.0% p.y., lower than the world's at 2.7% p.y.), stagnant labour productivity growth, and premature deindustrialization.

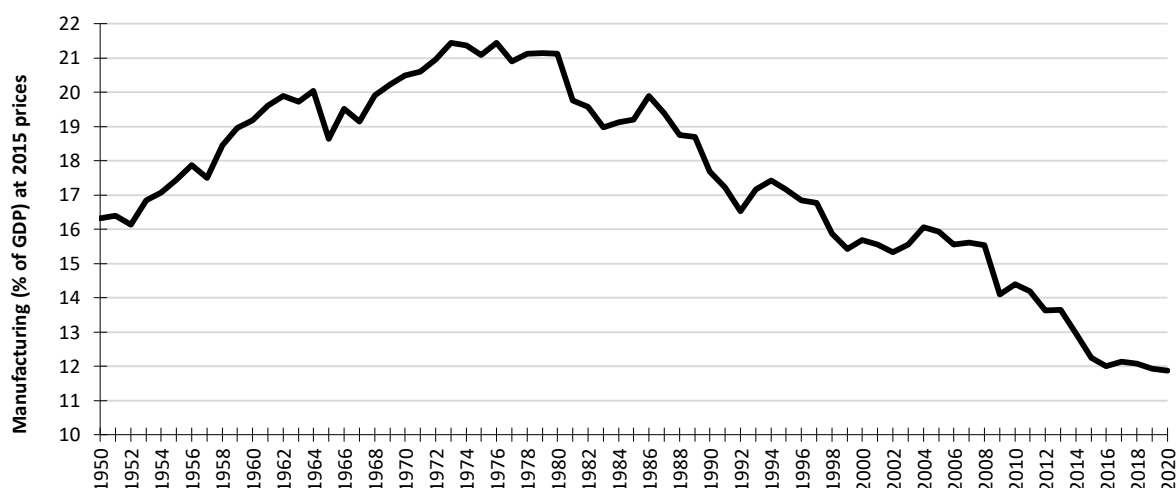
The Covid-19 pandemic crisis evidenced several economic, social and environmental problems that have afflicted Brazil for a long time. Identifying these central problems helps map out a guide for designing a mission-oriented industrial policy to renew the Brazilian trajectory towards catching up and improving the population's well-being. The remainder of this subsection will be used to proceed with this task, which will help us to indicate such primary missions. Then, in the following subsection, empirical simulations of the impact of final sectoral demand on the capacity to generate employment in general, medium & high-tech skills jobs, and green jobs will help us to choose the priorities at a disaggregated sectoral level.

Figures 4 and 5 give a long-term overview of the rise and fall of industrialization in Brazil in the last century. Figure 4 shows a continuing rise of the share of the manufacturing GDP in the Brazilian economy between 1950 and 1980, followed by a monotonical decline since then. The value added manufacturing share peaked at 21.4% in 1974 and was only 11.9% of Brazilian GDP in 2020.

Given the discontinuity of the employee database, we present three different data in Figure 5: two for the manufacturing employment share in overall employment (formal and informal); and one exclusively for the manufacturing employment share in the total formalized work. As expected, there was an increase in manufacturing employment share in overall jobs until the early 1980s, reflecting the absorption of traditional agricultural labour surplus during the initial industrialization trajectory. Yet, the Brazilian employment share in the manufacturing sector never surpassed the peak of 16.2% in 1986, contrarily to several development

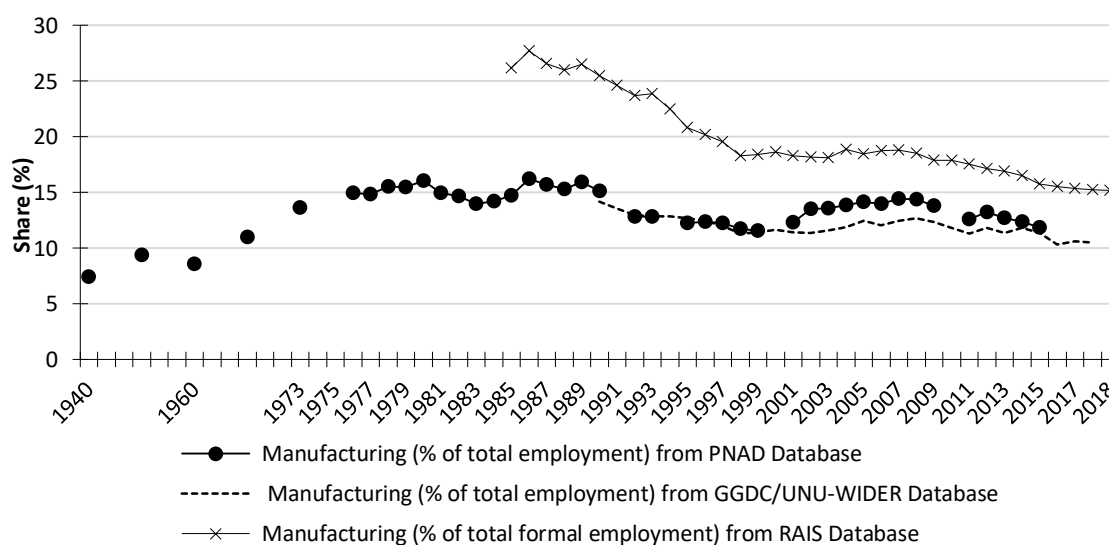
experiences (Felipe et al., 2020). The manufacturing employment share has fluctuated between 10.5% and 15% throughout 1990 and 2018, confirming that the Brazilian deindustrialization is prematurely manifested much more by the fall in the value added share than employment share. The top line in Figure 5 reveals that, despite the employment in the manufacturing sector representing a large share of total formalized jobs in Brazil, that share falls to 15.2%, against the peak of 27.4% registered in 1986.

Figure 4: Manufacturing value added share (% of GDP) in Brazil, 1950-2020 (at 2015 constant prices)



Source: Brazilian National Accounts System, Brazilian Institute of Geography and Statistics (IBGE). Authors' calculation and elaboration.

Figure 5: Manufacturing employment share in total employment in Brazil by three different databases (1940-2018; in %)



Source: National Household Sample Survey (PNAD)/IBGE; De Vries et al. (2021); Annual Social Security Information Report (RAIS) from Ministry of Labour and Social Security of Brazil. Authors' calculation and elaboration.

Table 1 permits a comparison of Brazil's and selected countries' economic performances between 1981 and 2020 per decade. Except for the 2001-2010 decade, Brazil's GDP grew at lower annual rates than the worlds. It is worth noting that Brazil had an underperformance of its manufacturing sector, which grew at lower rates than its GDP in all decades. China and India, in contrast, showed opposite results, suggesting that their manufacturing sector has been one of the engines of growth in both countries in the last decades.

Table 1: Manufacturing and GDP growth per decade (1981-2020; in %)

	The growth rate of GDP (%)				Manufacturing value-added growth rate (%)			
	1981-90	1991-00	2001-10	2011-20	1981-90	1991-00	2001-10	2011-20
Brazil	2.2	2.7	3.9	-0.4	1.3	2.1	2.8	-2.9
China	9.8	10.6	10.8	6.5	n.a.	12.8	12.3	5.7
Germany	2.5	1.6	0.8	0.6	2.0	0.2	1.1	-1.5
India	5.5	6.1	6.9	4.6	7.5	7.0	8.6	4.9
Japan	4.6	1.1	0.7	0.4	4.9	0.5	2.0	0.1
South Korea	10.3	6.7	4.7	2.3	12.6	8.9	6.7	1.8
United States	3.4	3.8	1.8	1.6	2.4	4.9	2.1	0.1
World	3.3	3.2	3.1	2.1	2.9	2.8	5.2	1.9

Note: n.a.: not available.

Source: National Accounts Main Aggregates Database from 1981-2019 and Unido for 2020. Authors' elaboration.

Tables 2 and 3, which present Brazil's sectoral share of GDP and the employment composition, respectively, identify the roots of the country's recent premature deindustrialization in Brazil. These and other figures ahead use a taxonomy adapted from Pavitt's (1984) classification to decompose the groups in the manufacturing sector.

By comparing data from Tables 2 and 3, we can see that premature deindustrialization in Brazil has manifested much more like a fall in the manufacturing value added in total GDP (it peaked at 21.4% in 1974, as mentioned before) than a significant drop in its employment share. As Table 2 indicates, between 2000 and 2018, deindustrialization, measured in percent of value added, continued its course in Brazil, characterized by a reallocation of production from manufacturing, construction, and energy infrastructure to the service sector and agriculture. The most significant falls in the manufacturing shares occurred in the scale-intensive, labour-intensive, and resource-based groups. Yet, the reallocation to the service sector was more or less balanced between low and medium-skilled and high-skilled labour. Still, this latter group is responsible for the majority of the value added share in the sector as a whole.

Table 2: Sectoral share of GDP in Brazil (2000-2018 selected years; at 2015 constant prices in (%))

	2000	2005	2010	2015	2018
Primary Goods (Agriculture and Mining)	6.0	6.7	6.5	7.2	7.6
Manufacturing	15.4	15.6	14.1	12.2	12.2
Resource-based	3.3	3.5	2.9	2.6	2.6
Labour-intensive	3.1	2.8	2.5	2.1	2.0
Scale Intensive	5.1	5.4	4.8	4.0	4.0
Specialised Suppliers	1.8	1.9	2.0	1.7	1.6
Science Based	2.0	2.0	1.8	1.8	1.9
Construction and Energy Infrastructure	8.2	7.5	8.2	8.1	7.2
Services	70.4	70.3	71.2	72.5	73.0
Low and medium-skilled services	33.1	33.0	33.7	34.0	34.3
High-skilled services	37.4	37.3	37.4	38.5	38.6
Total Economy	100.0	100.0	100.0	100.0	100.0

Source: Brazilian National Accounts System from IBGE. Authors' elaboration.

Table 3: Sectoral share of total employment in Brazil (2000-2018 selected years, in %)

	2000	2005	2010	2015	2018
Primary Sector (Agriculture and Mining)	21.5	20.2	16.1	13.2	13.0
Manufacturing	10.5	11.4	11.8	11.0	10.5
Resource-based	2.4	2.6	2.7	2.7	2.7
Labour-intensive	4.6	4.8	4.6	4.2	3.9
Scale Intensive	2.1	2.2	2.5	2.3	2.1
Specialised Suppliers	0.8	1.0	1.3	1.2	1.1
Science Based	0.7	0.7	0.7	0.6	0.6
Construction and Energy Infrastructure	7.8	7.4	8.7	9.1	8.0
Services	60.2	61.0	63.4	66.7	68.5
Low and medium-skilled services	41.1	41.5	41.0	42.1	43.2
High-skilled services	19.1	19.6	22.4	24.6	25.3
Total Economy	100.0	100.0	100.0	100.0	100.0

Source: Brazilian National Accounts System from IBGE. Authors' elaboration.

It is worth making two comments on the change in the employment share in the period 2000-2018: first, there was a significant drop in the labour share in agriculture and mining, reflecting the acceleration of mechanization in the Brazilian agribusiness in the last two decades; second, a considerable increase in the workforce share employed in services is noticeable, especially in those of high-skilled labour. However, low and medium-skilled services account for about two-thirds of service sector employment.

Table 4 registers the employment structure in Brazil, considering only the workforce employed in the formal market.

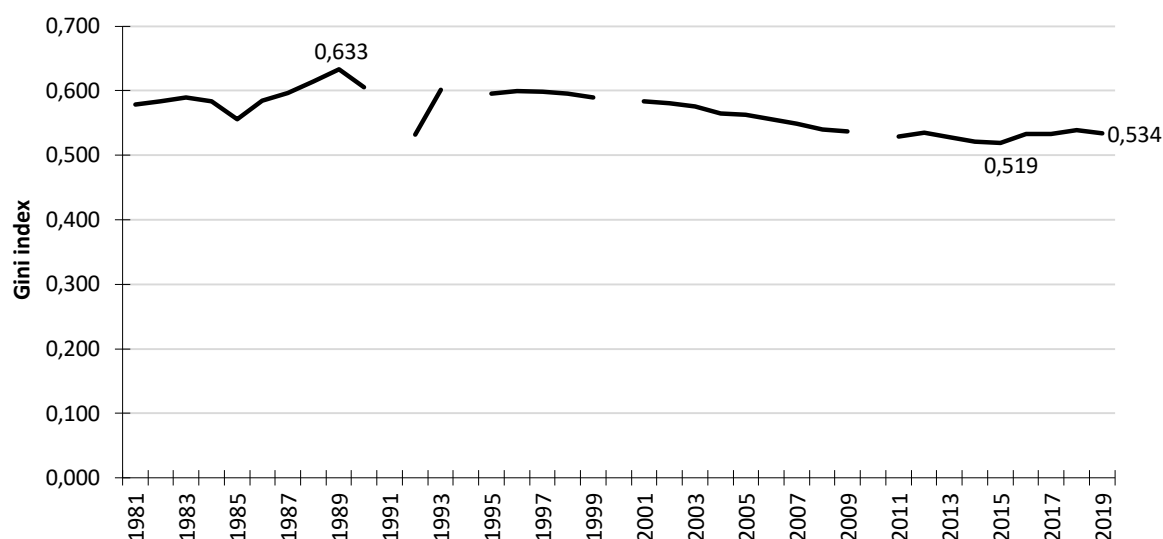
Table 4: Formal employment share in total employment in Brazil Selected years from 2010, in (%)

	2010	2015	2018
Agriculture, forestry, and fishing	12.8	12.3	12.7
Total Industry	53.3	52.3	49.6
Mining and quarrying	76.8	84.0	83.8
Manufacturing	67.4	67.3	65.2
Electricity and gas, water, sewage, waste management activities	65.5	73.2	70.8
Construction	30.5	30.2	24.2
Services	58.0	61.5	58.4
Wholesale and retail trade	50.9	55.7	54.9
Transportation, storage, and courier activities	51.5	55.7	49.1
Information and communication	67.5	76.8	76.3
Financial and insurance activities	90.7	92.9	92.6
Real estate activities	42.7	47.4	54.4
Other service activities	48.2	52.0	47.6
Public administration and defence; public health and education; and compulsory social security	94.0	94.4	94.2
Total Economy	49.9	53.3	50.9

Source: Brazilian National Accounts System from IBGE. Authors' elaboration.

Table 4 reveals the high share of informal workers in Brazil. In 2018, they represented almost half of the overall employment in the Brazilian economy. Data also contrast the very low formality of the labour force in agriculture, forestry, and fishing compared with the other sectors. This result is not surprising since Brazilian agriculture still maintains its dual characteristics of having a precarious condition for workers in the Northeast region and better well-being in the modern Southeast, South and Midwest. Based on the 2017 Brazil's Agriculture Census, Souza, Gomes and Alves (2020: 39) estimate that the income inequality in Brazilian agriculture is one of the highest in the world. The Gini index (closer to 1 means higher income concentration) at the firm level jumped from 0.85 to 0.90 between 2006 and 2017. The workforce's higher formalization occurs in the medium and higher-skilled labour services, especially in the public sector and financial activities. Except for construction, the other segments of the Brazilian industry (including manufacturing) also have a high degree of labour formalization.

This agricultural income concentration impacts both high overall social inequality and regional imbalance in Brazil, whose roots have historical, economic, and political causes that are out of the scope of our study. Even so, it is still worth registering some inequality indicators in Brazil. First, the Gini index related to aggregate income reveals that accelerated economic growth, as occurred throughout 1950 and 1980, is not safe against income concentration. The Gini index was still extremely high in 1981 (0.579), peaked in 1989 (0.633), and due to government social transfers and real increases of the minimum wage in the second half of the 2000s, fell to 0.519 in 2015. Then, with the 2015-2016 recession and low growth afterwards, it rose again to 0.534 in 2019.

Figure 6: Brazil's Gini index, 1981-2019

Source: World Bank estimate. Authors' elaboration.

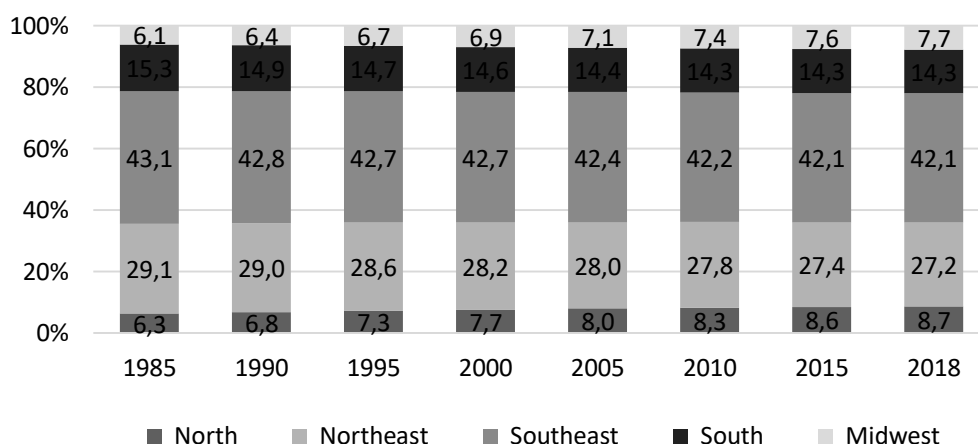
Second, despite still being high, as shown in Table 5, both the poverty and the extreme poverty ratios (indicated, respectively, in the second and the last columns) considerably decreased in Brazil, especially after the 2000s, as a result of several governmental social programs of income transfers to poor people. But these numbers involve a significant part of the Brazilian population in absolute terms (around 41,356 thousand and 9,706 thousand persons, respectively).

Table 5: Poverty headcount ratio in Brazil and World Selected years from 1981 (% of the population) (\$ in 2011 PPP)

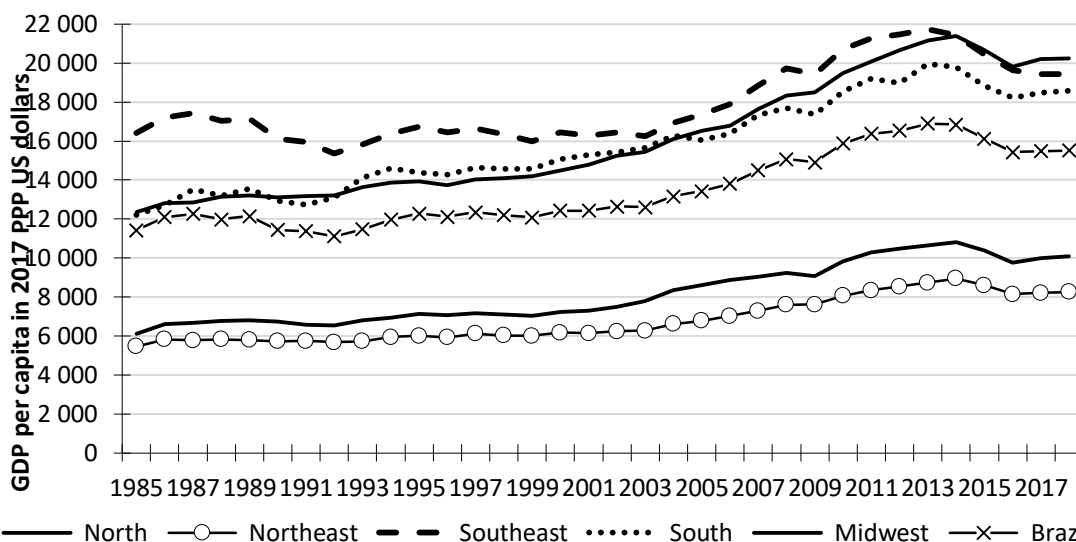
	less than 5.50 US dollars a day		less than 1.90 US dollars a day	
	Brazil	World	Brazil	World
1981	60.2	66.5	21.3	42.7
1990	57.6	67.1	21.5	36.2
2001	41.1	65.2	11.5	26.9
2011	23.8	52.1	4.7	13.9
2019	19.6	43.5*	4.6	9.3*

* 2017 data. Source: World Bank estimate. Authors' elaboration.

Third, as illustrated by Figures 7 and 8, income disparity also appears among Brazil's geographic regions. Despite concentrating 35.9% of Brazil's population in 2018, the North and Northeast regions had an average per capita income (around 9,174 US dollars) much lower than the country's per capita income (15,513 US dollars). Notably, the Northeast, considered the poorest region in the country and responsible for 27.2% of the total population, had a per capita income corresponding to 53.2% of the country's per capita income and only 40.8% of the Midwest's per capita income, Brazil's wealthiest region.

Figure 7: Geographic distribution of population in Brazil 1985-2018 (in %)

Source: Brazilian Institute of Geography and Statistics (IBGE). Authors' calculation and elaboration.

Figure 8: GDP per capita of the regions of Brazil 1985-2018 (in 2017 PPP US dollars)

Source: Brazilian Institute of Geography and Statistics (IBGE) and The Conference Board. Authors' calculation and elaboration.

Premature deindustrialization and a macroeconomic regime relatively unfriendly to capital accumulation and technical progress explain, at least partially, the stagnant labour productivity growth and the sluggish economic growth in Brazil in the last decades. Nassif, Feijo, and Araújo (2020) stress that the Brazilian macroeconomic regime is more biased towards price stabilization than other long-term goals, especially stimulus ones to boost potential output through capital accumulation and innovation. The authors (op.cit.: 749) show empirical evidence that, in the face of significant capital movements, an orthodox inflation targeting regime and a procyclical fiscal policy have been "perpetuating trends of high real interest rates, domestic currency overvaluation and low economic growth in Brazil in the last two decades."

Nassif, Bresser-Pereira and Feijo (2018) also point out that, in the absence of harmonization between the industrial policy and the macroeconomic regime, the former cannot boost productivity and structural change. In the authors' (op.cit.: 14) words:

"The main role of a consistent macroeconomic regime is, thus, to widen the policy space for seeding good results from the industrial policy. [Moreover], consistent macroeconomic policies create an environment favourable to capital accumulation, innovation, and structural change oriented to economic development and catching up."

In Brazil, for instance, the inability of the three industrial policy programs adopted between 2004 and 2014 to boost investment, innovation, and reverse premature deindustrialization is explained, at least partially, by the high real interest rates and real appreciation of the Brazilian currency prevailing in most of the period.¹⁰ The reason is apparent: as the former raises capital costs and the latter reduces the expected profit rate, they negatively affect investment and innovation. Nassif, Feijo, and Araújo (2020: 760-761) calculate that between 2006 and 2011, not only was the Brazilian real overvalued (except during transitory short periods) but also the real interest rate was around 6.5% p.y, on average (against 10.5% between 1999 and 2005). It is not surprising that such an economic environment is reflected in regressive trade specialization, that is, an export basket with a high share of commodities and imports concentrated in goods of high income-elasticity of demand, as evidenced in empirical studies (Nassif, Feijo and Araújo, 2015, Nassif and Castilho, 2020).¹¹ Tables 6, 7 and 8 confirm such a trend.

Table 6: Sectoral share of goods' total exports in Brazil Selected years from 1990-2020, in %

	1990	1995	2000	2005	2010	2015	2020
Primary Goods (Agriculture and Mining)	17.6	13.9	14.5	18.6	34.4	33.8	45.1
Manufacturing	81.1	84.7	83.4	79.4	63.4	64.3	54.6
Resource-based	21.2	24.0	18.4	21.0	21.2	20.9	20.7
Labour-intensive	10.3	10.0	9.1	6.7	4.4	4.5	2.5
Scale Intensive	32.0	31.5	29.8	29.8	21.1	20.9	19.4
Specialized Suppliers	8.8	9.8	14.0	11.6	8.5	9.9	5.5
Science Based	8.9	9.4	12.0	10.4	8.3	8.0	6.4
Not classified	1.3	1.4	2.1	2.0	2.2	1.9	0.3
TOTAL	100.0	100.0	100.0	100.0	100.0	100.0	100.0

Source: OECD. Authors' elaboration.

¹⁰ These industrial policies, whose details can be found on the website of Brazil's Ministry of Development, Industry and Commerce (<https://www.mdic.gov.br>), were entitled Foreign Trade, Technological and Industrial Policy (*Política Industrial, Tecnológica e de Comércio Exterior*, 2004–2008), Policy for Productive Development (*Política de Desenvolvimento Produtivo*, 2008–2010) and Major Brazil Plan (*Plano Brasil Maior*, 2011–2014).

¹¹ Coutinho (1997) first coined the term regressive specialization when analyzing the Brazilian economy throughout the 1990s. Nassif and Castilho (2020: 672) define regressive specialization as a process "in which both production and export structures are strongly oriented to activities or segments of low technological sophistication and, therefore, to low-income elasticity of demand."

Table 7: Sectoral share of goods' total imports in Brazil Selected years from 1990-2020, in %

	1990	1995	2000	2005	2010	2015	2020
Primary Goods (Agriculture and Mining)	30.3	11.8	11.8	17.0	12.1	11.8	7.0
Manufacturing	69.1	87.4	87.8	82.7	87.6	87.9	91.8
Resource-based	7.4	8.3	3.8	2.8	3.1	3.6	4.2
Labour-intensive	4.2	6.4	4.4	4.4	5.7	7.1	6.3
Scale Intensive	12.7	25.9	24.1	20.7	28.0	23.3	20.6
Specialized Suppliers	17.4	17.4	19.0	17.6	19.3	19.7	21.0
Science Based	27.4	29.4	36.4	37.0	31.5	34.2	39.7
Not classified	0.6	0.7	0.5	0.3	0.3	0.3	1.2
TOTAL	100.0	100.0	100.0	100.0	100.0	100.0	100.0

Source: OECD. Authors' elaboration.

Table 8: Trade balance of total goods in Brazil, Selected years from 1990-2020, in millions of US\$

	1990	1995	2000	2005	2010	2015	2020
Primary Goods (agriculture and mining)	-1,270	92	1,446	9,569	47,401	44,367	82,861
Manufacturing	9,968	-7,580	-3,056	33,265	-31,108	-27,779	-38,623
Resource-based	4,987	6,691	8,034	22,799	37,165	33,702	36,309
Labour-intensive	2,286	1,198	2,559	4,689	-1,637	-3,449	-5,303
Scale Intensive	7,183	758	2,968	20,003	-8,236	-24	6,343
Specialized Suppliers	-1,133	-4,777	-2,860	727	-17,951	-14,721	-23,402
Science Based	-3,356	-11,448	-13,757	-14,953	-40,449	-43,287	-52,570
Not classified	255	259	878	2,095	3,854	3,092	-1,394
TOTAL	8,953	-7,229	-732	44,928	20,147	19,681	42,844

Source: OECD. Authors' elaboration.

Table 6 shows the changes in the Brazilian export composition. It registers the rapid augmentation of the primary product share and the significant drop in manufactured goods in total exports between 1990 and 2020. In this period, Brazil developed its extreme dependency on commodity exports (represented by the sum of primary goods and resource-based manufactured goods), which reached 65.8% of total exports in 2020 (against 38.8% in 1990). In addition, there was a fall in the shares of all manufacturing groups, particularly in labour-intensive and scale-intensive goods.

Table 7 presents the changes in the Brazilian import composition. It confirms Brazil's extreme dependency as a manufactured goods importer and the country's almost self-sufficiency as a producer of primary goods. Between 1990 and 2020, the share of manufactured goods in total imports increased from 69.1% to 91.8%. Except for the resource-based group, the import

shares of all the other groups have grown, especially the more technologically sophisticated ones (scale intensive, specialized suppliers and science-based).

Table 8 registers Brazil's good's trade balance in selected years from 1990 to 2020. While trade surpluses tendentially concentrate in the primary sector, trade deficits increase in the manufacturing industry. Thus, despite Brazil's significant total trade surpluses in the last decade, the high volatility of international commodity prices does not save the country from the long-term balance of payments constraints. Moreover, Brazil's high dependency on commodities is not safe, for the eventual transitory gains obtained by commodity-price booms – the "commodity lottery," using Diaz-Alejandro's (1984) term – do not translate into permanent gains.¹²

The empirical evidence we showed in this subsection draws four primary missions for an industrial policy that would put the Brazilian economy towards a trajectory of catching up: first, reindustrialization and industrial revitalization; second, innovation promotion, technical progress, and creation of dynamic comparative advantages; third, fostering employment, job formalization, and the reduction of social and regional inequalities; and fourth, boosting investment in infrastructure. In addition, it is necessary to add two other missions to these primary missions: integrating Brazilian activities into digital technologies and gradually replacing technologies with high carbon dioxide (CO₂) emissions for lower ones.

In Section 4, we will analyze the motivations and priorities related to these mission-oriented industrial policies. It is worth anticipating that gradually transforming the Brazilian economy into a green economy is both an ethical issue and an economic one. As to this latter issue, there is a definite global trend to make the economy green and sustainable, with important implications for international manufacturing competitiveness through trade agreements and pressure from societies for carbon-neutral production processes and more efficient green products. Moreover, as we shall argue in Section 4, adopting green technologies can open enormous windows of potential opportunities to Brazil in a time when most countries in the world economy will (or will have to) do the same. Whatever these opportunities are, one of Brazil's priority challenges is to improve land use and fight against and reduce deforestation, which was responsible for 44% of the carbon dioxide emissions in 2018 (SEEG, 2019: 4).¹³

3.2 Empirical simulations on employment: overall, tech and green jobs

This subsection simulates the sub-sectoral impact on overall employment, green jobs, and technological jobs from an increase in final demand. Our objective is to identify sub-sectors that have greater intensity to generate jobs from a demand stimulus in order to support the industrial policy proposals of Section 4.2.

¹² Several empirical studies confirm the "secular" deterioration of the long-term terms of trade for periphery countries that were exporters of primary goods, such as Coatsworth and Williamson (2002) for the period 1870-1940, the IMF (1994) for the period 1945-1970, and Silva, Prado and Torracca (2016) for the period 1977-2011.

¹³ According to this Report (op.cit.: 4), the other shares related to direct emissions are as follows: agriculture and meat industry (25%); energy (23%); and other industries (8%).

3.2.1 Data and methodological procedures

To perform the simulations, we combined information from two databases. The first is the 2018 input-output matrix for Brazil available on The University of Sao Paulo Regional and Urban Economics Lab¹⁴ (Guilhoto & Sesso Filho, 2005, 2010). This matrix is the most current version disaggregated into 68 sub-sectors (or industries). The second database is the Annual Social Security Information Report (RAIS) – compiled by the Ministry of Labour and Social Security – which contains firms' administrative records, including the number of workers employed in 2,555 occupations in 581 industrial classes. This database provides information on 50 million workers in the formal labour market across the nation. We use an IBGE crosswalk table to convert the 581 industrial classes into 68 sub-sectors.

Traditionally, science, technology, engineering and mathematics professionals (STEM) serve as a proxy for technological development. This article's technological occupations came from the Brazilian Government Institute of Applied Economic Research that used the Brazilian Innovation Survey's firm-level data and found that 161 technical-scientific occupations are correlated to around 90% with R&D business enterprise expenditures and more than 75% of expenses on innovative activity for Brazil (Araújo, Cavalcante & Alvez, 2009). The occupations encompass engineers, chemists, physicists, researchers, R&D directors and managers, biotechnologists, biologists, mathematicians, and I.T. professionals.

We use the green occupations identified by a comprehensive project entitled “Greening of the World of Work” that was prepared for the U.S. Department of Labor Employment and Training Administration and led by researchers at North Carolina State University and the U.S. National Center for Occupational Information Network (O*NET) Development (Dierdorff et al., 2009; Dierdorff, Norton, Gregory, Rivkin, & Lewis, 2011). "The green economy encompasses the economic activity related to reducing the use of fossil fuels, decreasing pollution and greenhouse gas emissions, increasing the efficiency of energy usage, recycling materials, and developing and adopting renewable sources of energy" (Dierdorff et al., 2009, p. 3). We use all the green¹⁵ occupations identified as "green increased demand occupations." These are existing occupations that will increase with the growth of green economy activities and technologies. We created a crosswalk between green occupations in the American classification and green occupations in the Brazilian classification.

The total sub-sector employment was obtained from the input-output matrix. Thus, for the impact simulation, we have vectors of total employment, technological occupations (henceforth tech jobs) and green occupations (henceforth green jobs). We follow Guilhoto (2021) for the inter-sub-sector impact simulations with input-output. The Leontief model separates production technology (matrix of technical coefficients, A) from final demand. In the model, sub-sectors (or industries) are represented by a production vector x and a final demand vector y :

¹⁴ <http://www.usp.br/nereus/?fontes=dados-matrizes> (Accessed on 15 September 2021).

¹⁵ https://www.onetcenter.org/dictionary/22.0/excel/green_occupations.html (Accessed on 1 September 2021).

$$x = Ax + y \quad (1)$$

Where A represents the matrix of domestic inter-sub-sectoral coefficients. When we multiply A by x have the intermediate inputs necessary for production. Since the inverse of the matrix $(1 - A)$ exists, we can obtain in matrix notation:

$$x = (I - A)^{-1}y \quad (2)$$

$$B = (I - A)^{-1} \quad (3)$$

Where B is the Leontief inverse matrix of total (direct and indirect) requirements; the individual elements b_{ij} show the total output of sub-sector i that is necessary to produce one additional unit of final demand by sub-sector j .

Using the traditional Leontief model defined in equations (1-3), it is possible to measure how much employment, tech, and green jobs are embodied in final demand (y). For example, when we divide the green jobs of a sub-sector i , c_i , by the sub-sector total output i , x_i , the result shows the intensity of green jobs of sub-sector i , v_i , that is, green jobs generated by one monetary unit of production:

$$v_i = \frac{c_i}{x_i} \quad i = 1, 2, \dots, n \quad (4)$$

In matrix notation, (4) can be written as (5), being that the "hat" over a vector denotes a diagonal matrix with the elements of the vector along the main diagonal:

$$v = c(\hat{x})^{-1} \quad (5)$$

Where:

c_i is the green job (or tech job or employment) of sector i and c is the respective $1 \times n$ vector.

v_i is the intensity of green job (or intensity of tech job or employment) of sector i and v is the respective $1 \times n$ vector.

Combining equations (2) and (5) leads to:

$$c = \hat{v}(I - A)^{-1}y \quad (6a)$$

$$G = \hat{v}(I - A)^{-1} \quad (6b)$$

Where the total green jobs (or tech jobs or employment) can be associated with the final demand. Like matrix B in equation (3), matrix G in (6b) shows for each sub-sector how much directly and indirectly green jobs (or tech jobs or employment) are generated for each monetary unity produced for final demand.

3.2.2 Simulation results

Table 9 shows the simulation of the impact of a final demand increase of US\$10 million in each sub-sector on the direct and indirect generation of jobs, green jobs, and tech jobs. *Direct*

generation refers to employment generated in the sub-sector that received the increase in demand, and *indirect* generation refers to employment generated in the production chain of this sub-sector. The last two columns of the Table display the intensity of the impact on green jobs and tech jobs. In other words, the green jobs (or tech jobs) generated divided by the total employment generated by the increase in final demand. For the average of the entire economy (last line of the Table), an increase of US\$10 million in the sub-sector final demand generates 538.29 employment, 23.18 green jobs that represent 4.31% of the generated employment, and 3.99 tech jobs representing 0.74% of the generated employment. Cells highlighted in yellow display the sub-sectors that have a higher impact than the average economy.

Thus, the greater the intensity of the impact on tech jobs (or green), the greater the percentage of tech jobs (or green) in total employment generated for each US\$10 million increase in final demand. The sub-sectors of science-based groups, specialized suppliers and high-skilled services have the greatest intensity of impact on tech jobs. Some scale-intensive sub-sectors – such as motor vehicles and parts and accessories for motor vehicles – also had an above average impact intensity. These manufacturing sub-sectors have high technological opportunities and usually spend a higher share of the value added on R&D, as well as information services (mainly software), and engineering and R&D services (Breschi & Malerba, 1997; Galindo-Rueda & Verger, 2016).

Table 9: Direct and indirect impact resulting of an increase of US\$ 10 million on the Brazilian subsectors' final demand

	Green Jobs	Tech Jobs	Employment	(I) / (III)	(II) / (III)
	(I)	(II)	(III)	In percentage	
Primary Goods (Agriculture and Mining) (Average)	10.27	2.25	612.2	1.68	0.37
Agriculture, forestry and fishing	10.36	1.27	1,106.4	0.94	0.11
Agriculture, including support activities	8.73	1.43	743.8	1.17	0.19
Livestock, including support activities	11.65	1.28	1,678.8	0.69	0.08
Forestry and logging, including fishing and aquaculture	10.70	1.10	896.7	1.19	0.12
Mining and quarrying (Average)	10.20	2.98	241.6	4.22	1.23
Mining of coal and lignite; other mining and quarrying	10.32	3.11	390.0	2.65	0.80
Extraction of crude petroleum and natural gas, and	7.51	2.50	152.7	4.92	1.64
Mining of iron ores	10.74	2.17	183.2	5.86	1.19
Mining of non-ferrous metal ores	12.22	4.14	240.5	5.08	1.72
Manufacturing (Average)	39.47	2.95	441.9	8.93	0.67
Resource-based (Average)	35.73	2.26	604.1	5.91	0.37
Processing and preserving of meat and fish,	37.35	2.00	863.0	4.33	0.23
Manufacture of sugar	24.75	2.33	625.8	3.96	0.37
Other food products n.e.c.	32.25	2.30	572.9	5.63	0.40
Beverages	35.31	2.51	376.3	9.38	0.67
Tobacco products	11.57	2.45	474.9	2.44	0.52
Wood products, except furniture	73.13	1.98	711.5	10.28	0.28
Labour-intensive (Average)	52.38	2.44	622.2	8.42	0.39
Textiles	45.63	2.20	741.6	6.15	0.30
Wearing apparel	34.10	1.83	1,225.0	2.78	0.15
Leather products and footwear	58.11	2.04	685.3	8.48	0.30
Fabricated metal products, except machinery and	80.75	2.97	443.2	18.22	0.67
Furniture and other manufacturing	66.92	2.31	584.9	11.44	0.40
Repair and installation of machinery and equipment	47.49	2.89	420.5	11.29	0.69
Scale Intensive (Average)	37.62	2.98	351.3	10.71	0.85
Paper and paper products	29.17	2.62	303.7	9.61	0.86
Printing and reproduction of recorded media	38.00	2.82	480.9	7.90	0.59
Coke and refined petroleum products	6.91	2.03	169.3	4.08	1.20
Alcohol (biofuel)	22.94	2.15	529.2	4.33	0.41
Rubber and plastics products	68.06	2.87	336.6	20.22	0.85
Other non-metallic mineral products	44.15	2.90	478.4	9.23	0.61
Basic iron and steel	22.58	2.71	236.5	9.55	1.15
Basic precious and other non-ferrous metals; casting of	33.63	2.86	255.3	13.17	1.12
Motor vehicles and bodies (coachwork) for motor	36.78	4.19	309.2	11.89	1.36
Parts and accessories for motor vehicles	69.96	4.52	317.7	22.02	1.42
Specialized Suppliers (Average)	48.12	4.87	284.8	16.90	1.71
Electrical equipment	51.92	3.82	299.1	17.36	1.28
Machinery and equipment n.e.c.	62.61	4.78	338.4	18.50	1.41
Other transport equipment	29.84	6.02	216.8	13.76	2.78
Science Based (Average)	24.05	3.27	252.4	9.53	1.30
Basic chemicals, fertilizers and nitrogen compounds,	15.81	2.31	182.8	8.65	1.27
Pesticides and other agrochemical products; paints, varnishes and similar coatings, printing ink and	23.67	3.39	239.1	9.90	1.42
Soap and detergents, cleaning and polishing	39.98	3.16	359.4	11.12	0.88
Pharmaceuticals, medicinal chemical and botanical	15.58	3.32	241.4	6.45	1.37
Computer, electronic and optical products	25.25	4.17	239.3	10.55	1.74

Table 9 (Continuation): Direct and indirect impact resulting of an increase of US\$ 10 million on the Brazilian subsectors' final demand

	Green Jobs	Tech Jobs	Employment	(I) / (III)	(II) / (III)
	(I)	(II)	(III)	In percentage	
Construction and Energy Infrastructure (Average)	28.97	3.89	421.6	6.87	0.92
Electricity, gas, steam and air conditioning supply	11.47	3.24	137.0	8.37	2.36
Water supply; sewerage, waste management and	9.37	4.73	384.6	2.44	1.23
Construction	66.05	3.69	743.3	8.89	0.50
Services (Average)	8.33	5.54	635.6	1.31	0.87
Low and medium-skilled services (Average)	10.11	2.34	829.9	1.22	0.28
Wholesale and retail trade and repair of motor vehicles	10.88	1.80	761.9	1.43	0.24
Wholesale and retail trade, except for motor vehicles	5.63	2.69	673.7	0.84	0.40
Land transport and transport via pipelines	48.40	1.90	561.8	8.62	0.34
Water transport	11.46	2.59	234.8	4.88	1.10
Air transport	7.07	2.47	226.6	3.12	1.09
Warehousing and support activities for transportation;	20.53	3.49	376.8	5.45	0.93
Accommodation	6.43	1.98	773.2	0.83	0.26
Food and beverage service activities	10.29	1.19	985.4	1.04	0.12
Real estate activities	0.86	0.35	48.5	1.78	0.73
Administrative and support service activities; except	6.13	5.94	703.9	0.87	0.84
Security and investigation activities	1.89	1.50	728.2	0.26	0.21
Arts, entertainment and recreation	6.12	2.34	1,157.5	0.53	0.20
Other service activities	5.79	4.45	1,165.1	0.50	0.38
Activities of households as employers of domestic	0.00	0.00	3,221.5	0.00	0.00
High-skilled services (Average)	6.54	8.75	441.2	1.48	1.98
Publishing activities, except software publishing	8.12	4.99	472.8	1.72	1.06
Motion picture, video and television programme production, sound recording and music publishing	4.83	4.71	397.8	1.21	1.18
Telecommunications	4.85	6.97	286.8	1.69	2.43
Computer programming, consultancy and related	3.09	35.40	281.3	1.10	12.58
Financial and insurance activities	1.86	3.91	177.8	1.05	2.20
Legal and accounting activities; activities of head	4.69	3.02	420.9	1.11	0.72
Architectural and engineering activities; technical	23.05	20.72	498.0	4.63	4.16
Advertising and market research; other professional,	8.59	7.49	447.6	1.92	1.67
Rental and leasing activities	5.34	3.39	350.7	1.52	0.97
Public administration and defence; compulsory social	3.93	2.82	316.2	1.24	0.89
Public education	3.99	10.97	515.6	0.77	2.13
Private education	2.90	4.45	831.5	0.35	0.53
Human health and social work activities (public)	9.63	9.34	565.1	1.70	1.65
Human health and social work activities (private)	6.77	4.33	614.3	1.10	0.71
Total Economy (Average)	23.18	3.99	538.3	4.31	0.74

Note: 2018 Data. Sub-sectors highlighted in yellow have a higher impact than the economy average. Source: Author's elaboration.

It is noteworthy that the Brazilian State has important public research institutes that carry out R&D in various sub-sectors; for example, the Department of Aerospace Science and Technology (DCTA acronym in Portuguese), Brazilian Space Agency (AEB acronym in Portuguese) and the Navy Technological Centre of Sao Paulo (CTMSP acronym in Portuguese) have all contributed to other transport equipment, thus obtaining the largest impact in tech jobs in manufacturing. The government acts through sub-sectoral regulations to increase investments in R&D with the Computers Law¹⁶ (Lei de Informatica in Portuguese) and with the research institute Centre of Excellence in Advanced Electronic Technology (CEITEC acronym in Portuguese) in the sub-sector of computer, electronic and optical products.

Other sub-sectors regulated by the government, such as education and health, energy and oil extraction and mining, have an intensity of impact on tech jobs above the average for the economy (Table 9). In these sub-sectors, the Brazilian State acts directly via public research institutes and indirectly via sub-sector regulation to increase the technological effort (Morceiro, 2018). In public health, there are several public research institutes – such as the Oswaldo Cruz Foundation (Fiocruz¹⁷ acronym in Portuguese), Butantan, Vital Brazil, Adolfo Lutz, and Pasteur – that work in areas related to population health and tropical diseases, including conditions such as AIDS, Chagas, tuberculosis, schistosomiasis, malaria, leprosy, measles, rubella, meningitis, hepatitis as well as with vaccines, serums and pathogens of great social interest. Fiocruz and the Butantan Institute have produced 76.8% of the 227 million Covid-19 vaccines¹⁸ applied in Brazil. In mining and quarrying, the State determines that oil and natural gas extraction companies invest 1.0% of gross revenue in R&D activities; the public research institutes Company for Research of Mineral Resources (CPRM acronym in Portuguese) and Centre for Mineral Technology (CETEM acronym in Portuguese) play a prominent role with R&D investments over US\$100 million in mining. Finally, in energy, the research conducted by the National Nuclear Energy Commission (Cnem acronym in Portuguese) – an agency of the Brazilian government – total around US\$100 million and, through regulation, the State determines that energy generation and distribution companies allocate to R&D between 0.2% and 0.4% of net revenue (Morceiro, 2018). In education, many universities and public institutes carry out R&D like the Technological Institute of Aeronautics (ITA acronym in Portuguese) linked to aerospace research conducted by Embraer. In short, directly and indirectly, the State stimulates research, being directly responsible for at least half of the spending on R&D in Brazil (Morceiro, 2018).

As for green jobs, most of the manufacturing, construction, energy, and transport services sub-sectors have had green job generation and impact intensity above the economy average (Table 9). Green jobs in manufacturing cover the industrial production of green technology – for example, "green" materials that are required by other sub-sectors such as construction

¹⁶ Regulation that grants tax benefits and requires in return the investment of 5% of revenue in R&D.

¹⁷ Fiocruz is one of the three institutions that invests the most in R&D in Brazil along with Petrobras and Embrapa (Morceiro, 2018).

¹⁸ By 23 September 2021, about 70% of the Brazilian population received at least one dose, and 40% were fully immunized with two doses or a single dose (Source: https://qsprod.saude.gov.br/extensions/DEMAS_C19Vacina/DEMAS_C19Vacina.html).

and renewable energy – as well as energy-efficient manufacturing processes to prevent pollution and save energy; in transportation, these jobs "cover activities related to increasing efficiency and/or reducing environmental impact of various modes of transportation including trucking, mass transit, freight rail;" and in construction they are related to "new green buildings, retrofitting residential and commercial buildings, and installing other green construction technology" (Dierdorff et al., 2009).

In general, labour-intensive sub-sectors typically have an employment impact above the economy average, such as agriculture, low-skilled services, construction, labour-intensive manufacturing sub-sectors, some resource-based manufacturing sub-sectors, inclusive education, and high-skilled health services (Table 9). Except for education and health, most of these sub-sectors have a high degree of labour informality in Brazil – especially agriculture, construction, and low-skilled services – and the wage per worker is lower than the economy average. However, labour-intensive sub-sectors are essential for the recovery of post-pandemic employment due to the high unemployment rate of 14.6%, according to the IBGE's National Household Sample Survey of July/2021.

By combining the impact intensity of tech and green jobs, we see that the more sophisticated manufacturing sub-sectors – scale-intensive, specialized suppliers and science-based – and engineering and R&D services have better performance than the economy average.

4. A mission-oriented industrial policy proposal for Brazil

This section aims to identify the general guidelines of an industrial policy to tackle structural bottlenecks and significant obstacles to socioeconomic development in Brazil. Despite being advanced in relation to most developing countries, it is still incomplete when compared to developed countries. In other words, the objective is not to design policies with associated instruments but to draw a generic roadmap with priorities to build consensus – note that the missions use existing industrial policy instruments, but in a combined way with the specific purpose to increase the success rate of the policy. To fulfil our objective, we base our mission-oriented innovation policies framework on Mazzucato's (2018) and Kattel & Mazzucato's (2018); however, the mission-oriented industrial policies we propose are broader and do not focus only on innovation.

For Brazil to achieve successful results with the missions, the business environment needs to improve significantly to enable innovation and international competitiveness. A tax reform that eliminates regressive tax and reduces the complexity of indirect taxes is vital – a topic that forms a consensus in the country. Establishing a trade policy more consistent with import tariffs at a moderate level so that firms can learn and develop imitative and innovative capabilities also forms a consensus (Viotti, 2002). Thus, any trade liberalization, if adopted, should not be introduced using linear import tariff cuts (across-the-board), but, rather, as a case-by-case policy instrument ("concertina") for accelerating innovators' learning curve and avoiding excessive imports of close substitute goods. In addition, it is essential to adjust the macroeconomic regime (monetary, fiscal and exchange rate policies) to stimulate domestic production, in line with Nassif, Bresser-Pereira and Feijo's (2018) proposals.

Subsection 4.1, which follows, presents the priority missions to be pursued in the coming decades, and Subsection 4.2 connects industrial policy to these missions.

4.1 Wide-ranging priority missions

We use the theoretical discussion in Section 2, the diagnosis presented in Subsection 3.1 and the United Nations Sustainable Development Goals (SDGs)¹⁹ to define six priority missions to be pursued in the long term, summarized in Table 10. The main challenges and obstacles to Brazil's development are included in many of the 17 goals of the SDGs (second column of Table 10). For Brazil to advance in its development and surpass the middle income, it is necessary to innovate more (mission 2), create good jobs and reduce social and regional inequalities (mission 3), advance in the digital economy (mission 5) and take actions to have a more carbon neutral and sustainable production activity (mission 6). Additionally, a significant expansion and revitalization of infrastructure (mission 4) and manufacturing (mission 1) is also required. The synergies among the six missions should be explored to maximize gains like the actions proposed by Sachs et al. (2019) that seek to optimize the results of the SDGs goals based on their synergies — for example, investing in innovation (mission 2) to produce wind turbines (missions 1 and 6) and their electronic components (missions 1 and 5) and installing them in the Northeast of the country (missions 3 and 4). Note that infrastructure can also contribute directly and indirectly to all six missions and generate many jobs and high social return externalities.²⁰ Remember that the specialized suppliers and science-based manufacturing groups have the greatest potential to generate tech and green-intensive jobs. At the same time, these two groups are responsible for the most innovative activities of the economy. By prioritizing some of their subsectors, the industrial policy can simultaneously match missions 2 (innovation promotion, technical progress, and creation of dynamic comparative advantages) and 6 (take actions to make the economy greener and sustainable).

Table 10: Main industrial policy missions

Missions	Motivation
1.Reindustrialization and industrial revitalization	Brazil prematurely deindustrialized in a very intense way in the last 40 years. In this period, the growth rate has been stagnant. Furthermore, the populous and backward regions have never reached a moderate degree of industrialization. Nevertheless, these regions have the potential to advance in the industrialization of sub-sectors that do not compete with the South-Southeast, where the labour cost is relatively expensive. SDG 9 aims to promote inclusive and sustainable industrialization. Revitalizing manufacturing through innovation, clean technologies, and integration with new I.T. services, in addition to industrializing

¹⁹ <https://sdgs.un.org/goals>

²⁰ As to the public investment in infrastructure, the case for boosting such public investment goes beyond the short-term effect of Keynesian fiscal multipliers. As Furman and Summers (2020: 34) argue, in virtue of its high externalities, “from a supply-side perspective, public investment can also offset some, all or even more than all of its cost if it has a sufficiently high rate of return in expanding the economy’s potential itself. More important for a broader set of policies, public investments that have a rate of return in excess of the interest rate can repay themselves in present value terms.”

Missions	Motivation
2. Innovation promotion, technical progress, and creation of dynamic comparative advantages	Scale intensive, specialized suppliers and science-based manufacturing sub-sectors lose share in Brazil's productive structure and export basket, even though all of them are the most innovative and dynamic of capitalist economies. Brazil patents and innovates little, despite having all the coordinated National Innovation System (NIS) actors. Innovation indicators have been stagnant since the early 2000s when the Innovation Surveys systematically measured them. ²¹ SDG 9 aims to foster innovation. Innovation diffuses technical progress and sustains productivity growth in dynamic terms, in addition to driving the share of employment (for the sub-sector of origin and the sub-sectors benefiting from adoption/diffusion).
3. Boost employment and its formalization and reduce social and regional inequalities	Brazil has a high unemployment rate of 14.6%. Only half of the country's jobs are formal. The informality degree is even more significant in the most backward regions. SDG 8 aims at full and productive employment and decent work for all, and SDG 10 seeks to reduce income inequality within and among regions.
4. Increase investment in infrastructure	This kind of investment generates high long-term social return. The country's level of infrastructure investments has been low in the last 25 years, and in the previous three years, it has been below the depreciation rate. Brazil has a shortage in several areas; for example, 16% of the population does not have access to treated water, 47% does not have access to a sewage system ²² and the rail transport network per km ² is low for a continental country. SDG 9 also includes building resilient infrastructure, and SDG 6 aims to ensure availability and sustainable management of water and sanitation for all.
5. Moving forward in the digital economy	A new industrial revolution is underway through the combination of several technologies of the so-called Industry 4.0. New digital technologies have the potential to revitalize almost all manufacturing sub-sectors, as Andreoni (2018) showed. In addition, information services technologies are increasingly contributing to expanding the technological frontier, and the country that strengthens them can take advantage of the opportunities opening up.
6. Take actions to make the economy greener and sustainable	There is a strong global trend to make the economy green and sustainable, with relevant implications for international manufacturing competitiveness through trade agreements and pressure from societies for carbon-neutral production processes and more efficient products. New competitive parameters are emerging, such as the reparability index to French products like the energy efficiency label required in several countries. Goals 12, 13 and 15 of the SDGs are directly related to decarbonization, reduction in CO ₂ emissions, protecting forests and climate change.

Source: Authors' elaboration

It should be mentioned here that Brazil already has successful examples of combining such missions. One, it turned the Midwest region (Brazilian savannah) into a large modern agricultural producer based on technologies²³ developed by Embrapa in partnership with public universities (Andreoni & Tregenna, 2020; Mazzucato & Penna, 2016). Two, it developed and used sugarcane ethanol as an alternative to gasoline in the 1970s, 1980s, and 1990s and

²¹ 2018 R&D expenditure (% of GDP) is still low in Brazil (1.16%) compared to the World (1.73%), China (2.14%), the US (2.83%), Germany (3.13%), Japan (3.28%) and South Korea (4.53%) according to UNESCO data.

²² Data from the National Healthy Sanitation Information System, released in 2020 and referring to 2018.

²³ For example, correcting soil acidity and genetic improvement of seeds, adopting new fertilization practices, soil management, and pest and disease control.

developed flex-fuel engines (ethanol and/or petrol) for cars in the 2000s (Mazzucato & Penna, 2016). Three, Petrobras's technology programs have extracted offshore oil in increasingly deeper waters with several world records since 1979 (Mazzucato & Penna, 2016). The three examples and the action of the State via public research institutes and sub-sectoral regulation mentioned in Subsection 3.2 show that Brazil can coordinate, define and obtain good results with the missions. But for this to continue, it is necessary to increase the focus since a large share of public R&D resources are not yet results-oriented (De Negri, 2021). Note that the country's industrial policies under the Workers' Party governments (2003-2016) have received criticism for their lack of focus and disconnection with the macroeconomic policies; thus, the six missions give a necessary focus to industrial policies.

4.2 Target sub-sectors linked to priority missions

We selected sub-sectors to be targeted by industrial policy considering the priority missions and simulation parameters (type of employment) shown in Subsection 3.2.1. Below is the list of sub-sectors:

- *Health and pharmaceutical complex (missions 1 and 2)*. Brazil has many key players in the health innovation system, such as public research institutes (Fiocruz and Butantan), big pharma companies with foreign and national capital and the strong purchasing power of the State through the Unified Health System (SUS acronym in Portuguese). In this complex are science-based industries (pharmaceutical and chemical), specialized suppliers (medical-hospital equipment) and scale-intensive manufacturing (plastics linked to hospital supplies). The country can be a world authority in tropical diseases and pharmaceuticals (biotechnology) based on biodiversity. The ageing of the population will enable the expansion of residential care activities that are labour intensive (mission 3).
- *Reindustrialization of niches with more significant potential to generate tech jobs and dynamic comparative advantages (missions 1 and 2)*. Policymakers can select few niches from science-based, specialized suppliers and scale-intensive manufacturing. For example:
 - Chemical inputs such as fertilizers and pesticides, since the country has a high trade deficit and substantial agricultural demand.
 - Aerospace industry niches, as there are already productive and technological capacities from Embraer – a leading company in the value chain that produces regional jets and is entering the flying car segment – and ITA.
 - Develop the entire electric motors and batteries chain for electric vehicles, including the charging infrastructure (missions 1, 2 and 4). Note that all the world's largest automakers have factories in Brazil.
- *Industrialization of backward regions, especially in more populated areas in the North and Northeast (missions 1 and 3)*. The State can encourage industrialization from peripheral areas where labour is still cheap through labour-intensive and resource-

based manufacturing. In the more peripheral regions, they will need a mix of policies, such as expanding infrastructure (mission 4), income transfers to create markets (mission 3) and professional training and innovation policies (mission 2). It is noteworthy that income transfers via successful programs such as Bolsa Familia or Emergency Aid used during the pandemic have a high marginal propensity for mass consumption linked to the sub-sectors of food, clothing, footwear, construction, and retail trade, which are all labour-intensive ones (mission 3).

- *Improve the quality of education* (mission 2 and 5). The country has made a great effort to universalize education in recent decades; however, the results obtained in the Program for International Student Assessment (PISA) remain very weak. According to UNESCO 2018 data, the average years of schooling (age 25+) in Brazil is 7.98, which is still low compared to advanced countries (14.08 in Germany and 13.50 in the US). Improving the quality of education is, directly and indirectly, related to all missions, especially innovation.
- *Information services, mainly software* (missions 2 and 5). Currently, information services invest in R&D as much as in more technologically sophisticated manufacturing (Galindo-Rueda & Verger, 2016) and play a vital role in the leading technologies of the digital economy – such as artificial intelligence, machine learning, cloud computing, advanced robotics, virtual reality, etc. These technologies can revitalize manufacturing (mission 1) due to the growing symbiosis between industry and services. Information services have a transversal role, contributing to raising productivity throughout the economy.
- *Sub-sectors linked to infrastructure expansion and green economy* (mission 1, 2, 4 and 6). For example:
 - Capital goods on demand are linked to social infrastructure (human transportation such as subways and commuter rail) and physical infrastructure (freight trains and port equipment).
 - Telecommunications equipment is linked to the expansion of technological infrastructures, such as the 5G network. Expanding the coverage and speed of the broadband network can reduce regional inequalities (mission 3), allow society to adapt more quickly to digital technologies (mission 5), and enable new business models in peripheral regions.
 - Chemical inputs and plastic products are linked to the expansion of basic sanitation.
 - Energy generation, transmission, and distribution equipment, including clean energy such as photovoltaic panels and wind turbines (mission 4).

Currently, Brazil is at risk of an energy crisis due to the low levels of the water reservoirs that maintain the hydroelectric plants. Therefore, the country needs to expand and diversify its energy matrix. Solar and wind energy are great alternatives because the country has the highest rate of solar irradiation in the world and since its coastline is quite extensive and

concentrates the population and economic activity, this facilitates the generation and transmission of wind energy. And to reduce the intermittency problem, the country can use the vast structure of hydroelectric plants as a backup to wind and solar production.

All the above policies generate jobs, especially those linked to infrastructure expansion, income transfers, and the industrialization of light industries in backward regions. In addition to these, two other policies are capable of increasing employment. The first is linked to incentives to the construction sector that could be adopted in the immediate post-pandemic period, which indirectly impacts many sub-sectors – such as non-metallic minerals, wood products, metallurgy, plastics, and engineering services. Through sectoral regulation, the government can demand greener buildings, for example, with incentives for solar panels and more sustainable materials. The second, which is more structural in the medium to long term, will depend on advances in innovation, trade policy and improvement in the business environment to increase the manufacturing exports' market share, which is currently below 1%. Brazil should have goals to increase the market share of exports, including in the less high-tech sub-sectors where the country has comparative advantages. However, the international presence is still low.

The State can also act via sub-sector regulation to accelerate the necessary changes towards environmentally sustainable investments with regulatory frameworks for residential construction and infrastructure. The State can further raise technological and environmental efficiency requirements in sub-sectors dominated by multinational companies, such as the automobile industry.

5. Conclusion

Deindustrialization is one of the most researched topics in economics in the last decades, but it has not equally affected countries worldwide. In developed countries, deindustrialization is driven by technological progress and manifested in the drop of the share of manufacturing employment in total employment. Yet, in most developing countries, deindustrialization has prematurely accelerated, except for a few where this phenomenon has not occurred at all. For example, in Asian countries, both the value added manufacturing share in total GDP and the employment share in overall employment increased between 1970 and 2017; in Latin American countries, these results were in opposition.

Since the information and communication revolution circa the 1970s, there have been growing medium and high-tech activities in tradable services. In addition, the current digital economy revolution (Industry 4.0) brings several creative, but job destructive, technologies such as robotics, artificial intelligence, the internet of things, big data, 3D printing, and nanotechnology, among others. As a result, many analysts anticipate that there will be radical job destruction and the transformation of the global world into a service economy. However, Industry 4.0 tends to integrate with manufacturing throughout the twenty-first century rather than merely interact. Therefore, it is more appropriate to understand this latter sector and the medium and high-tech services as an ecosystem of complex technologies that generate dynamic feedback rather than isolated activities. This means that the role of manufacturing

as an engine of growth could be reduced but not eliminated since it will continue to act as the primary source of generation and diffusion of technical progress (Aiginger and Rodrik, 2020). Moreover, although new technologies are labour-saving, the actual impact of the digital revolution on employment is not so evident in the long run.

In Brazil, particularly, premature deindustrialization began in the mid-1980s, accelerated in the following decades and has manifested much more as a fall in the manufacturing value added in total GDP than as a significant drop in its employment share. Since the early 2000s, macroeconomic policies extremely unbiased towards price stabilization vis-à-vis sustaining economic growth oriented to the catching up have been responsible for stagnant labour productivity and sluggish growth.

Most empirical studies calculate the degree of premature deindustrialization based on aggregate calculations of the share of manufacturing value added in total GDP or manufacturing employment in overall employment. However, recent empirical estimates at a sub-sectoral level conclude that the most innovative manufacturing groups like machine and equipment and science-based manufacturing segments are not deindustrializing in value added and employment shares (Tregenna and Andreoni 2021; Dosi, Riccio, and Virgilitto, 2021). Therefore, industrial policy for the most innovative sub-sectors may be able to reindustrialize middle-income countries like Brazil.

In this paper, we presented several descriptive statistics data on the productive structure, employment, trade pattern, social indicators, and empirical simulations of sub-sector impact on job creation (overall, the scientific, tech and green ones) from an increase in final demand with the input-output methodology. The set of evidence permitted us to propose a mission-oriented industrial policy to boost labour productivity growth and restore Brazil's catching-up trajectory. We propose the following six missions: (i) Reindustrialization and industrial revitalization; (ii) Innovation promotion, technical progress and creation of dynamic comparative advantages; (iii) Employment, job formalization, and reduction of social and regional inequalities; (iv) Boosting investment in infrastructure; (v) Integrating the Brazilian activities into the digital technologies; and (vi) Gradually replacing technologies with high carbon dioxide (CO₂) emissions for lower ones.

We also identified sub-sectors for industrial policy based on the types of jobs (overall, the tech and green ones) generated by empirical simulations and linked them to the six missions. Here are some examples:

1. The sub-sectors linked to the health and pharmaceutical complex (missions 1 and 2) are likely to prosper because of the public research institutes, big pharma and the substantial purchasing power of the State. Brazil can be a world authority in tropical diseases and biodiversity-based biotechnology.
2. Reindustrialization of niches intensive in tech jobs (missions 1 and 2), such as (i) Chemical inputs (fertilizers and pesticides), as the country has a high trade deficit and substantial agricultural demand; (ii) Aerospace industry niches, as there are already productive and technological capacities from Embraer and ITA; (iii) Development of

the entire electric motors and batteries chain for electric vehicles, including the charging infrastructure (missions 1, 2 and 4).

3. Information services (missions 2 and 5) play a vital role in the digital economy's leading technologies, and they can revitalize manufacturing (mission 1) with the growing industry-services integration.
4. The infrastructure expansion sub-sectors and green economy (mission 1, 2, 4 and 6), such as (i) Capital goods for subways, commuter rail, freight trains and port equipment; (ii) Telecommunications equipment for 5G network expansion; (iii) Chemical inputs to expanding basic sanitation; and (iv) Energy equipment, including clean energy such as photovoltaic panels and wind turbines (mission 4).

The State can accelerate the necessary changes towards an environmentally sustainable economy and a less socially and regionally unequal one with regulatory frameworks for infrastructure and automobile industry and become more entrepreneurial. After four decades of economic stagnation and regression, Brazil cannot lose any more time.

References

- Aiginger, K., and Rodrik, D. (2020). "Rebirth of industrial policy and an agenda for the twenty-first century." *Journal of Industry, Competition and Trade*, vol. 20:189–207.
- Amsden, A. H. (2001). *The Rise of "the Rest": Challenges to the West from Late-industrializing economies*. Oxford: Oxford University Press.
- Andreoni, A. (2018). "The architecture and dynamics of industrial ecosystems: diversification and innovative industrial renewal in Emilia Romagna". *Cambridge Journal of Economics*, 42(6):1613–1642.
- Andreoni, A., & Tregenna, F. (2020). "Escaping the middle-income technology trap: A comparative analysis of industrial policies in China, Brazil and South Africa". *Structural Change and Economic Dynamics*, 54:324–340.
- Araújo, E., Araújo, E., Peres, S.C., and Punzo, L. (2021). "An investigation into shapes and determinants of deindustrialization processes: theory and evidence for developed and developing countries (1970-2017)". *Economia*, forthcoming, forthcoming.
- Araújo, B. C., Cavalcante, L. R., & Alvez, P. (2009). "Variáveis proxy para os gastos empresariais em inovação com base no pessoal ocupado técnico-científico disponível na Relação Anual de Informações Sociais (Rais)". *Radar: Tecnologia, Produção e Comércio Exterior*, 5: 16–21.
- Baily, M.N., Bosworth, B. P. (2014). "US manufacturing: understanding its past and its potential future". *Journal of Economic Perspectives*, vol.28, no.1, Winter: 3-26.
- Bianchi, P., and Laboury, S. (2018). *Industrial Policy for the Manufacturing Revolution: Perspectives on Digital Globalisation*. Cheltenham, UK: Edward Elgar.
- Breschi, S., & Malerba, F. (1997). "Sectoral innovation systems: technological regimes, Schumpeterian dynamics, and spatial boundaries". In C. Edquist (Ed.), *Systems of innovation: technologies, institutions and organizations*. Abingdon: Routledge:130–156.
- Coatsworth, J. H. e Williamson, J. G. (2002). "The roots of Latin American protectionism: looking before the Great Depression". NBER "working paper" n.o 8999. Cambridge, Ma.: National Bureau of Economic Research, June.
- Coutinho, L. (1997). "A especialização regressiva: um balanço do desempenho industrial pós-estabilização", In J.P.R. Velloso (coord.), *Brasil: Desafios de um País em Transformação*, Rio de Janeiro, José Olympio: 81–106.
- Dasgupta, S., Singh, A. (2006). "Manufacturing, services, and premature deindustrialization". Research Paper no. 2006/49. Helsinki: UNU World Institute for Development Economics Research (UNU-WIDER).
- De Negri, F. (2021). *New pathways for innovation in Brazil*. Rio de Janeiro: Ipea : Washington, DC: Wilson Center.

- De Vries, G., Arfelt, L., Drees, D., Godemann, M., Hamilton, C., Jessen-Thiesen, B., Kaya, A.I., Kruse, H., Mensah, E., Woltjer, P. (2021). "The economic transformation database (ETD): content, sources, and methods". WIDER Technical Note 2/2021.
- Diaz-Alejandro, C. (1984). "Latin America in the 1930s". In: R. Thorpe (ed.). *Latin America in the 1930s*. London: Macmillan.
- Dierdorff, E. C., Norton, J. J., Drewes, D. W., Kroustalis, C. M., Rivkin, D., & Lewis, P. (2009). "Greening of the World of Work: Implications for O*NET-SOC and New and Emerging Occupations". Washington, DC: U.S. Department of Labour, National Center for O*NET Development.
- Dierdorff, E. C., Norton, J. J., Gregory, C. M., Rivkin, D., & Lewis, P. (2011). "Greening of the World of Work: Revisiting Occupational Consequences". Washington, DC: U.S. Department of Labour, National Center for O*NET Development.
- Dosi, G., Pavitt, K. and Soete, L. (1990). *The economics of technical change and international trade*. London: Harvester Wheatsheaf.
- Dosi, G., Riccio, F., Virgilitto, M.E. (2021). "Varieties of deindustrialization and patterns of diversification: why microchips are not potato chips". *Structural Change and Economic Dynamics*, vol. 57: 182-202.
- Felipe, J., Mehta, A., Rhee, C. (2019). "Manufacturing matters...but it's the Jobs that count". *Cambridge Journal of Economics*, vol. 43: 139–168.
- Furman, and Summers, L. (2020). "A reconsideration of fiscal policy in the era of low interest rates." Notpublishedpaper.
- Furtado, C. (1961). *Desenvolvimento e Subdesenvolvimento*. Rio de Janeiro: Editora Contraponto, 2009.
- Furtado, C. (1992). *Os Ares do Mundo*. 2ª edição. São Paulo: Paz e Terra.
- Galindo-Rueda, F., Verger, F. (2016). *OECD taxonomy of economic activities based on R&D intensity* (OECD Science, Technology and Industry Working Papers No. 2016/04). Paris: OECD Publishing.
- Guilhoto, J. J. M. (2021). "Input-Output Models Applied to Environmental Analysis". In *Oxford Research Encyclopedia of Environmental Science*. Oxford University Press.
- Guilhoto, J. J. M., & Sesso Filho, U. A. (2005). "Estimação da matriz insumo-produto a partir de dados preliminares das contas nacionais". *Economia Aplicada*, 9(2): 277–299.
- Guilhoto, J. J. M., & Sesso Filho, U. A. (2010). "Estimação da matriz insumo-produto utilizando dados preliminares das contas nacionais: aplicação e análise de indicadores econômicos para o Brasil em 2005". *Economia & Tecnologia*, 23: 53–62.
- IMF (1994). "World Economic Outlook: A Survey by the Staff of the International Monetary Fund". Washington, DC. International Monetary Fund. October.

- Kaldor, N. (1966). Causes of the Slow Rate of Economic Growth of the United Kingdom: An Inaugural Lecture. In: N. Kaldor. Further Essays on Economic Theory. London: Duckworth: 100-138.
- Kaldor, N. (1967). Strategic Factors in Economic Development. Ithaca, New York: Cornell University.
- Kattel, R., & Mazzucato, M. (2018). "Mission-oriented innovation policy and dynamic capabilities in the public sector". *Industrial and Corporate Change*, 27(5): 787–801.
- Lewis, W. A. 1954. Economic development with unlimited supplies of labour, *Manchester School of Economic and Social Studies*, vol. 22, no. 2, 139–91.
- Lin, J., Chang, H.J. (2014). "Should industrial policy in developing countries conform to comparative advantage or defy it? A debate between Justin Lin and Ha-Joon Chang. *Development Policy Review*, 2009, 27 (5): 1-20.
- Manyka, J., Sinclair, J., Dobbs, R., Strube, G., Rasse, L., Mischke, J., Remes, J., Roxburgh, C., George, K., O'Halloran, D., Ramaswamy, S. (2012). "Manufacturing the future: the next era of global growth and innovation". McKinsey Global Institute.
- McMillan, M. S. and Rodrik, D. (2011). "Globalization, structural change, and productivity growth". NBER Working Paper no. 17.143. Cambridge, MA: National Bureau of Economic Activity.
- Marx, K. (1867). *O Capital: Crítica da Economia Política - o Processo de Produção do Capital*. Livro I. Edição brasileira. São Paulo: Editora Boitempo, 2013.
- Mazzucato, M. (2018). "Mission-oriented innovation policies: challenges and opportunities". *Industrial and Corporate Change*, 27(5): 803–815.
- Mazzucato, M. (2021). *Mission Economy. A Moonshot Guide to Changing Capitalism*. New York: HarperCollins.
- Mazzucato, M., & Penna, C. (2016). *The Brazilian Innovation System: A Mission-Oriented Policy Proposal*. Brasília, DF: Centro de Gestão e Estudos Estratégicos (CGEE). Retrieved from <https://www.cgee.org.br/the-brazilian-innovation-system%5Cn>. Accessed on 25 September 2021.
- Morceiro, P. C. (2018). *A indústria brasileira no limiar do século XXI: uma análise da sua evolução estrutural, comercial e tecnológica*. Tese (Doutorado) – Faculdade de Economia, Administração e Contabilidade, Universidade de São Paulo, São Paulo.
- Morceiro, P. C. (2021). "Influência metodológica na industrialização brasileira". *BrazilianJournalofPoliticalEconomy*, vol. 41(4). forthcoming.
- Nassif, A. (2008). "Há evidências de desindustrialização no Brasil?". *Brazilian Journal of Political Economy*, vol.28, no.1 (109): 72-96.
- Nassif, A., and Castilho, M. (2020). "Trade patterns in a globalised world: Brazil as a case of regressive specialization". *Cambridge Journal of Economics*, vol.44: 671-701.

- Nassif, A., Bresser-Pereira, L. C. and Feijo, C. 2018. "The case for reindustrialisation in developing countries: towards the connection between the macroeconomic regime and the industrial policy in Brazil". *Cambridge Journal of Economics*, vol. 42, 355–381.
- Nassif, A., Feijo, C., and Araújo, E. (2020). "Macroeconomic policies in Brazil before and after the 2008 global financial crisis: Brazilian policy-makers still trapped in the New Macroeconomic Consensus guidelines". *Cambridge Journal of Economics*, vol.44: 749-779.
- Nassif, A., Feijo, C., Araújo, E. (2015). "Structural change and economic development: is Brazil catching up or falling behind?" *Cambridge Journal of Economics*, vol.39: 1307-1332.
- Nassif, A., Morandi, L., Feijo, C. and Araújo, E. (2020). "Economic development and stagnation in Brazil (1950-2011)". *Structural Change and Economic Dynamics*, vol.53: 1-15.
- Palma, J.G. (2005). "Four sources of de-industrialization and a new concept of the Dutch disease". In: J A Ocampo, *Beyond Reforms: Structural Dynamics and Macroeconomic Vulnerability*. Washington, DC: Stanford University Press and World Bank, 2005: 71-116.
- Palma, J.G. (2019). "Desindustrialización, desindustrialización "prematura" y "síndrome holandés". *El Trimestre Económico*, vol. LXXXVI (4), no. 344, Octubre-Diciembre: 901-966.
- Pavitt, K. "Sectoral patterns of technical change: towards a taxonomy and a theory". *Research Policy*, n. 13: 343-373
- Prebisch, R. (1949). *El Desarrollo Económico de la América Latina y Algunos de sus Principales Problemas*. Santiago de Chile: Naciones Unidas/Cepal.
- Prebisch, R. (1951). *Problemas Teóricos y Prácticos del Crecimiento Económico*. Santiago de Chile: Naciones Unidas/Cepal (edição de 1973).
- Rodrik, D. (2016). "Premature deindustrialization". *Journal of Economic Growth*, vol. 21(1): 1-33, March.
- Rowthorn, R. (1994). "Korea at the cross-roads". Working Paper no. 11. Centre for Business Research Cambridge. Cambridge, UK: University of Cambridge.
- Rowthorn, R., and Ramaswamy, R. (1999). "Growth, trade and deindustrialization". *IMF Staff Papers* 46(1): 18-41. Washington DC: International Monetary Fund.
- Sachs, J. D., Schmidt-Traub, G., Mazzucato, M., Messner, D., Nakicenovic, N., & Rockström, J. (2019). "Six Transformations to achieve the Sustainable Development Goals". *Nature Sustainability*, 2(9): 805–814.
- SEEG (2019). *Análise das Emissões Brasileiras de Gases de Efeito Estufa e suas Implicações para as Metas do Brasil (1970-2018)*. Observatório do Clima. <https://www.oc.eco.br/wp->

content/uploads/2019/11/OC_SEEG_Relatorio_2019pdf.pdf Accessed on 30 September 2021.

- Silva, J.C.A.L, Prado, L.C. e Torracca, J. (2016). “Um novo olhar sobre um antigo debate: a tese de Prebisch-Singer é, ainda, válida?”. *Economia Aplicada*, Vol.20, no.2: 203-226.
- Souza, G. S., Gomes, E. G., Alves, E. R. A. (2020). “Uma visão da agricultura brasileira com base em dados recentes do censo agropecuário”. In: J.E.R.
- Vieira Filho, e J. C. Gasques. *Uma Jornada pelos Contrastes do Brasil: Cem Anos do Censo Agropecuário*. Brasília: Instituto de Pesquisa Econômica Aplicada (IPEA), 2020: 39-50.
- Tregenna, F., Andreoni, A. (2020). “Deindustrialisation reconsidered: structural shifts and sectoral heterogeneity”. Working Paper 2020-06. London: Institute for Innovation and Public Purpose, University College London.
- Viotti, E. B. (2002). “National learning systems: a new approach on technological change in late industrializing economies and evidences from the cases of Brazil and South Korea”. *Technological Forecasting & Social Change*, 69 653–680.
- Young A. A. (1928). “Increasing Returns and Economic Progress”. *The Economic Journal* 152 (XXXVIII), December: 527-542.

6. Appendix 1: Classification adopted

Classification	Industry	Code ISIC 4
Primary goods	Agriculture, forestry and fishing	01-03
	Mining and quarrying	05-09
Resource-based Manufacturing	Food products, beverages and tobacco	10-12
	Wood and products of wood and cork, except furniture	16
Labour-intensive manufacturing	Textiles, wearing apparel, leather and related products	13-15
	Fabricated metal products, except machinery and equipment	25
	Furniture, other manufacturing	31-32
	Repair and installation of machinery and equipment	33
Scale intensive manufacturing	Paper and printing	17-18
	Coke and refined petroleum products	19
	Rubber and plastics products	22
	Other non-metallic mineral products	23
	Basic metals	24
Specialized suppliers manufacturing	Motor vehicles, trailers and semi-trailers	29
	Electrical equipment	27
	Machinery and equipment n.e.c.	28
Science-based manufacturing	Other transport equipment	30
	Chemicals and chemical products	20
	Basic pharmaceutical products and pharma preparations	21
Construction and energy infrastructure	Computer, electronic and optical products	26
	Electricity, gas, steam and air conditioning supply	35
	Water supply; sewerage, waste management and remediation activities	36-39
Low and medium-skilled services	Construction	41-43
	Wholesale and retail trade	45-47
	Transportation and storage	49-53
	Accommodation and food service activities	55-56
	Real estate activities	68
	Administrative and support service activities, except for rental and leasing activities	78-82
	Arts, entertainment and recreation	91-93
	Other service activities	94-96
High-skilled services	Activities of households as employers of domestic personnel	97
	Information and communication	58-63
	Financial and insurance activities	64-66
	Professional, scientific and technical activities	69-75
	Rental and leasing activities	77
	Public administration and defence; compulsory social security	84
	Education	85
Human health and social work activities	86-88	

Source: Authors' elaboration based on Pavitt (1984) and Dosi, Riccio, and Virgilitto (2021).

DSI/NRF South African Research Chair in
Industrial Development (SARChI-ID)
31 Henley Road, Auckland Park,
Johannesburg, South Africa

General enquiries:
Koketso Manyane - Dlangamandla
Email: koketsom@uj.ac.za
Tel: +27 011 559 7454

