

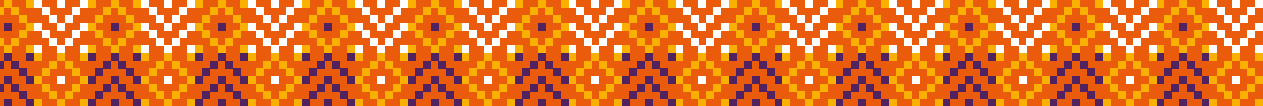


**20** YEARS  
— 2005-2025 —

**Our Future. Reimagined.**

# Life@UJ

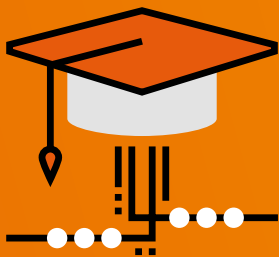
WHAT **UJ** HAS TO OFFER IN **2026**



# About Life@UJ



**UJ encourages a balanced lifestyle for its students – it is not all work and no play... UJ has a lot more to offer than just academic excellence!**



**UJ has 4 campuses spread throughout the City of Gold.**

## **7 FACULTIES AND A COLLEGE**

- Art, Design and Architecture ..... 8
- Business and Economics (College) ..... 9
- Engineering and the Built Environment ..... 11
- Health Sciences ..... 13
- Humanities ..... 15
- Law ..... 16
- Education ..... 17
- Science ..... 19

Over 178 programmes ranging from certificates to diplomas, degrees, postgraduate degrees and short courses – loads of options that make UJ truly accessible.

## How to APPLY

Determine your **Admission Point Score (APS)** based on your subjects and marks per subject. Please consult the UJ Prospectus online at [www.uj.ac.za](http://www.uj.ac.za) for the total APS and subject requirements for your specific programme. See how to determine your APS on the pages to follow.



## Apply ON TIME

Applications open on **1 April** and the closing date for applications is **31 October 2025** at 12:00.

## Fill in your APPLICATION

Fill in your **UJ application form** either online (no application fee) or download the application form and post or submit a paperbased application at a UJ Student Enrolment Centre on any one of the campuses. Please note that UJ is entitled to request applicants currently in Grade 12 to provide certified copies of final Grade 11 results together with all other relevant documents for verification and auditing purposes.

[mylife@uj.ac.za](mailto:mylife@uj.ac.za) (Email)  
011 559 4555 (Phone)  
+27 87 240 6854 (WhatsApp)



Scan here to go to online residence applications



## Look after YOUR BODY

### UJ Sport

caters to those wanting to forge a career in sports, as well as those who want to actively participate in sport from a social-recreational, competitive and high performance level. With more than 32 sporting categories to choose from you can participate in a sporting code that satisfies your needs, interests and abilities. UJ Sport also has a Biokinetic Clinic on the Bunting Road Campus.

011 559 2252

## Residences

UJ is home to 35 residences spread out over 4 campuses.

Our residence staff is committed to ensuring that your stay at the university is as comfortable as possible. We accommodate thousands of students just like you each year and ensure that they experience the best that UJ has to offer! Staying at a UJ Residence will afford you the opportunity to fully immerse yourself in our culture and recreational activities. We will also make sure you do not feel too home sick. Residence application closing date is **31 October 2025**.

## GRADE 11 Marks

Get the best possible marks you can in Grade 11 to ensure you are provisionally accepted when applying in Grade 12. Full acceptance will be based on your final Grade 12 marks. Please note, UJ only has a certain number of spaces available for first-year applicants and only the best learners will be selected to attend UJ. Meeting the minimum requirements and being provisionally accepted will not guarantee you a place at UJ.

## Look after your HEALTH

At the **UJ Campus Clinics** they look after primary health care, health education and promotion, screening and monitoring of chronic conditions, reproductive health care (family planning), HIV/Aids Counselling and Testing (HCT) and Travel Medicine (Kingsway Campus).

## Look GOOD! Feel GOOD!

Every UJ campus has a fully equipped gym to attend. So if you aren't into sports, then keep fit at a UJ gym for a reasonable membership fee.



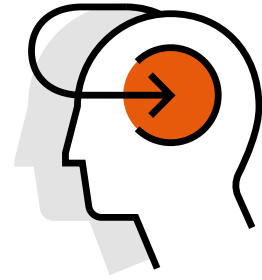
## Look out for STUFF YOU NEED

The **UJ Student Centres** are packed with takeaway outlets, ATMs, campus grocery stores, book and stationery shops, coffee shops, restaurants and more. Everything under one roof – you need not even leave the campus!



## Listen out for the best in INFOTAINMENT

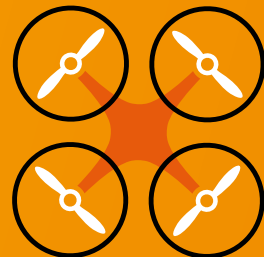
**UJFM 95.4**, Jo'burg's Youth/ Student Campus Community Radio Station has a footprint of some 50 km radius and strives for radio excellence and to fulfil all of its listeners' information and entertainment needs.



## Look after your MIND & SOUL

**PsyCaD** offers the following services to you:

- **Career Services:** counselling, career guidance and assessment. [psychservices@uj.ac.za](mailto:psychservices@uj.ac.za)
- **Psycho-educational Services:** psychological assessments, peer helper and residence development programmes.
- **Therapeutic Services:** therapy provision, trauma counselling, 24-hour crisis line and Voluntary Counselling & Testing (VCT).
- **Academic Services:** people with disabilities, work integrated learning, first year experience (FYE), faculty liaison.
- **Training and Development Services:** supervision and training of intern psychologists and intern psychometrics. [psycadinfo@uj.ac.za](mailto:psycadinfo@uj.ac.za)



# Imagine your Life @UJ



## Look after the COMMUNITY

The UJ Community Engagement team consists of voluntary students involved in raising funds for community initiatives and engaging with community service projects. **Join in and help make a difference.**

## Look out for your BUDDIES ~ UJSRC ~

Each Campus SRC (Student Representative Council) is responsible for representing students of the particular campus and for organising student activities on that particular campus.

Each SRC nominates two members to serve in the Central UJSRC.

The UJSRC may be described as the SRC for the university as a whole and acts as the legal representative of the student community.



## Look out for UJ TALENT

**UJ Arts & Culture**, a Division of the Faculty of Art, Design & Architecture, produces and presents world-class student and professional arts programmes aligned to the UJ vision of an *International University of Choice, anchored in Africa, dynamically shaping the future*. A robust range of arts platforms are offered on all four UJ campuses for students, staff, alumni and the general public to experience and engage with emerging and established pan-African and international artists drawn from the full spectrum of the arts. For regular updates follow **@ujartscentre** on Twitter or visit <https://arts.uj.ac.za>.



## Look out for your SAFETY – UJ PROTECTION SERVICES

UJ wants to assure your safety with the provision of Protection Services. This team is responsible for guarding and protecting UJ students, staff, visitors, buildings and properties through pro-active crime awareness and investigation activities. Your safety and security is UJ's top priority.

011 559 4555



# NATIONAL & INTERNATIONAL APPLICANTS

## How to determine your Admission Point Score (APS)

An Admission Point Score (APS), explained below, has been developed for the National Senior Certificate (NSC) and the Independent Examinations Board (IEB) based on the Achievement Rating of each subject. The total APS is the sum of the achievement ratings of the six school subjects. Life Orientation is not counted in the calculation of the total APS.

### Rules to be implemented with this development.

In order to determine the Admission Point Score (APS) the following principles need to be taken into consideration:

- Applicants with the following results, WAEC, Diplome or Exam D'Etat, Certificado de Habilitacoes Literarias, Ensino Medio and Baccalaureat should be linked with the Ordinary Level (O) Grades on UJ's Student database.
- Applicants with the following results, HIGCSE, NSSC (HL), AS Level, IB (SL) and KCSE should be linked to the South African NSC (N) Grades on UJ's Student database.
- Applicants who have set for either A Level or IB (HL) should be linked to the (A) Grades on UJ's Student database.

APS	NATIONAL						INTERNATIONAL									
	NSC (IEB/SACAI /ISC)	SC HG (M-SCORE)	SC SG (M-SCORE)	HIGCSE/ NSSC (HL)	IGCSE/ NSSC (OL)	AS LEVELS	A LEVELS	IB (HL)	IB (SL)	WAEC	KCSE	Diplome/ Exam D'Etat	CHL/EM	Bacca-laureate	AHSD	
10							A/A*	7								
9							B	6								
8							C	5								
7	7 (80-100%)	A		1		A/A* (7)	D	4	7		A				A	
6	6 (70-79%)	B	A	2		B (6)	E	3	6		B				B	
5	5 (60-69%)	C	B	3	A/A* (9-7)	C (5)		2	5	A	C	80-100%	16-20	16-20	C	
4	4 (50-59%)	D	C	4	B (6-5)	D (4)		1	4	B	D	70-79%	14-15	14-15	D	
3	3 (40-49%)	E	D		C (4)	E (3)			3	C	E	50-69%	10-13	10-13		
2	2 (30-39%)	F	E		D/E (3)				2	D/E	F	30-49%	8-9	8-9		
1	1 (0-29%)	G	F		F/G (2-1)				1	F/G	G	0-29%	0-7	0-7		

### ABBREVIATIONS

NSC	National Senior Certificate (completed Grade 12 in and after 2008)
SC HG	Senior Certificate Higher Grade (completed Grade 12 before 2008)
SC SG	Senior Certificate Standard Grade (completed Grade 12 before 2008)
IEB	Independent Examination Board
ISC	International Secondary Certificate
SACAI	South African Comprehensive Assessment Institute
HIGCSE	Higher International General Certificate of Secondary Education
IGCSE	International General Certificate of Secondary Education
NSSC(HL)	Namibia Senior Secondary Certificate (Higher Level)
NSSC(OL)	Namibia Senior Secondary Certificate (Ordinary Level – Cambridge)
AS	Advanced Subsidiary Level (Cambridge)
A Level	Advanced Level (Cambridge)
IB(HL)	International Baccalaureate Schools (Higher Levels)
IB(SL)	International Baccalaureate Schools (Standard Levels)
WAEC	West African Examination Council
KCSE	Kenya Certificate of Secondary Education
Diplome/Exam D'Etat	Diplôme/Examen d'Etat Diplôme d'Etat or/ou d'études du cycle secondaire
CHL/EM	Certificado de Habilitacoes Literarias (Mozambique) / Ensino Medio (Angola)
Baccalaureate	Gabonese School Leaving
AHSD	American High School Diploma

Scan here to calculate your AP Score online



Points are awarded for the six symbols on your Grade 11 or Grade 12 report. See example below.

School Subject	Marks	APS
First language (language of teaching and learning)	65%	5
Additional recognised language	71%	6
Mathematics or Mathematical Literacy	61%	5
Accounting	68%	5
History	81%	7
Geography	86%	7
<b>Total</b>		<b>35</b>

\* Life Orientation is not counted in the calculation of the total APS.



**20 YEARS**  
— 2005-2025 —

**Our Future. Reimagined.**



# Calling all **top** **achieving matriculants!**

**See your hard work turned into  
rewards that you could only dream of.**

The UJ Orange Carpet Rewards is a programme for top performing matriculants who achieved a minimum of 70% in their six best subjects required for the programme you are interested in with your final Grade 11 and Grade 12 results. **This programme rewards excellence and embraces accomplishment.** It does not only include guaranteed monetary rewards, but also other incentives that will enrich your student life.

Read more about this exciting programme at [www.uj.ac.za/imaginethat](http://www.uj.ac.za/imaginethat).

*Terms and conditions apply.*

## Faculty of Art, Design and Architecture

PROGRAMME	Minimum APS	English *	Mathematics	Mathematical Literacy	Technical Mathematics **
<b>DEGREE PROGRAMMES</b>					
<b>Bachelor Degree (3 years)</b>					
<b>B ARCHITECTURE</b>	30	5 (60%+)	5 (60%+)	Not accepted	Not accepted
<b>BA Degree (3 years)</b>					
<b>BA (COMMUNICATION DESIGN) BA (DIGITAL MEDIA DESIGN)</b>	25 with Mathematics OR 26 with Mathematical Literacy	5 (60%+)	3 (40%+)	4 (50%+)	Not accepted
<b>BA (FASHION DESIGN) BA (INDUSTRIAL DESIGN) BA (INTERIOR DESIGN)</b>		5 (60%+)	4 (50%+)	5 (60%+)	Not accepted
<b>BA (VISUAL ART) ✪</b>	25 with Mathematics / Technical Mathematics OR 26 with Mathematical Literacy	5 (60%+)	3 (40%+)	4 (50%+)	3 (40%+)
<b>DIPLOMA PROGRAMMES</b>					
<b>Diploma (3 years)</b>					
<b>ARCHITECTURE</b>	25 with Mathematics OR 26 with Technical Mathematics	5 (60%+)	4 (50%+)	Not accepted	5 (60%+)
<b>FASHION PRODUCTION</b>	22 with Mathematics OR 23 with Mathematical Literacy	5 (60%+)	3 (40%+)	4 (50%+)	Not accepted
<b>JEWELLERY DESIGN AND MANUFACTURE</b>	20 with Mathematics OR 21 with Mathematical Literacy OR 22 with Technical Mathematics	5 (60%+)	3 (40%+)	4 (50%+)	5 (60%+)

✪ The requirement for Maths or Maths Literacy as a matric subject for international admission into the BA in Visual Art undergraduate degree may be exempt – provided the university entrance requirements and APS score remain intact and such admission is compliant with all undergraduate degree requirements.

\* English, Home Language, First Additional Language

\*\* Recommended subjects: Engineering Graphics and Design, Mechanical Technology, Consumer Studies, History.

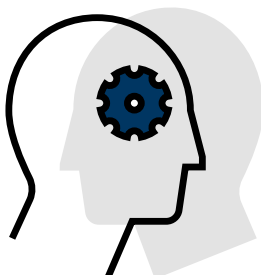
Admission Point Scores (APS) are used with the current South African National Senior Certificate (NSC) structure. Visit [www.uj.ac.za/fada](http://www.uj.ac.za/fada) for further information.





## College of Business and Economics

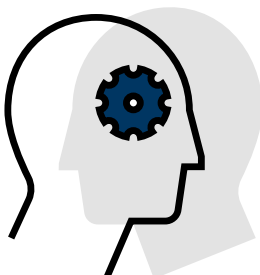
PROGRAMME	Minimum APS	English	Mathematics	Mathematical Literacy	Technical Mathematics
<b>DEGREE PROGRAMMES</b>					
<b>Bachelor degree (3 years)</b>					
ACCOUNTING (CA)	33	4 (50%+)	5 (60%+)	Not accepted	Not accepted
HOSPITALITY MANAGEMENT	26 Maths / Tech Maths OR 28 Math Lit	5 (60%+)	4 (50%+)	5 (60%+)	4 (50%+)
HUMAN RESOURCE MANAGEMENT	28 Maths / Tech Maths OR 28 Math Lit	4 (50%+)	4 (50%+)	5 (60%+)	4 (50%+)
TOURISM DEVELOPMENT AND MANAGEMENT	26 Maths / Tech Maths OR 28 Math Lit	5 (60%+)	3 (40%+)	4 (50%+)	3 (40%+)
<b>Bachelor of Arts Degree (3 years)</b>					
PUBLIC MANAGEMENT AND GOVERNANCE	26 Maths / Tech Maths OR 28 Math Lit	5 (60%+)	3 (40%+)	5 (60%+)	3 (40%+)
<b>Bachelor of Commerce Degree (3 years)</b>					
ACCOUNTING ECONOMICS AND ECONOMETRICS FINANCE	28	4 (50%+)	4 (50%+)	Not accepted	Not accepted
BUSINESS MANAGEMENT ENTREPRENEURIAL MANAGEMENT INFORMATION SYSTEMS MARKETING MANAGEMENT	26	4 (50%+)	4 (50%+)	Not accepted	4 (50%+)
INDUSTRIAL PSYCHOLOGY	26 Maths / Tech Maths OR 28 Math Lit	4 (50%+)	4 (50%+)	5 (60%+)	4 (50%+)
INFORMATION MANAGEMENT	26 Maths / Tech Maths OR 28 Math Lit	4 (50%+)	4 (50%+)	6 (70%+)	4 (50%+)
TRANSPORT AND LOGISTICS MANAGEMENT	27	5 (60%+)	4 (50%+)	Not accepted	4 (50%+)
<b>EXTENDED DEGREE PROGRAMMES</b>					
<b>Bachelor of Commerce Extended Degree (4 years)</b>					
ACCOUNTING ECONOMICS AND ECONOMETRICS FINANCE	25 with Mathematics OR 28 with Mathematical Literacy	4 (50%+)	3 (40%+)	6 (70%+)	Not accepted
BUSINESS MANAGEMENT	25 Maths / Tech Maths OR 28 Math Lit	4 (50%+)	3 (40%+)	6 (70%+)	3 (40%+)



## College of **Business and Economics** (cont.)

PROGRAMME	Minimum APS	English	Mathematics	Mathematical Literacy	Technical Mathematics
<b>DIPLOMA PROGRAMMES</b>					
Diploma (3 years)					
<b>ACCOUNTING FINANCIAL SERVICES OPERATIONS</b>	22 Mathematics / Technical Mathematics OR 24 Mathematical Literacy	4 (50%+)	3 (40%+)	5 (60%+)	3 (40%+)
<b>BUSINESS INFORMATION TECHNOLOGY</b>	22 Mathematics / Technical Mathematics OR 24 Mathematical Literacy	4 (50%+)	3 (40%+)	6 (70%+)	3 (40%+)
<b>FOOD AND BEVERAGE OPERATIONS PEOPLE MANAGEMENT MARKETING RETAIL BUSINESS MANAGEMENT SMALL BUSINESS MANAGEMENT TOURISM MANAGEMENT</b>	22 Mathematics / Technical Mathematics OR 24 Mathematical Literacy	4 (50%+)	3 (40%+)	5 (60%+)	3 (40%+)
<b>LOGISTICS TRANSPORTATION MANAGEMENT</b>	24 Mathematics / Technical Mathematics OR 26 Mathematical Literacy	4 (50%+)	3 (40%+)	5 (60%+)	3 (40%+)
<b>EXTENDED DIPLOMA PROGRAMMES</b>					
Extended Diploma (4 Years)					
<b>PEOPLE MANAGEMENT SMALL BUSINESS MANAGEMENT</b>	19 Mathematics / Technical Mathematics OR 21 Mathematical Literacy	4 (50%+)	3 (40%+)	4 (50%+)	3 (40%+)
<b>LOGISTICS TRANSPORTATION MANAGEMENT</b>	22 Mathematics / Technical Mathematics OR 24 Mathematical Literacy	4 (50%+)	3 (40%+)	5 (60%+)	3 (40%+)
<b>ONLINE PROGRAMMES</b>					
Bachelor of Commerce Degrees					
<b>BACHELOR OF HUMAN RESOURCE MANAGEMENT</b>	28 Mathematics / Technical Mathematics OR 28 Mathematical Literacy	4 (50%+)	4 (50%+)	5 (60%+)	4 (50%+)
<b>BACHELOR OF COMMERCE IN ACCOUNTANCY</b>	28 with Mathematics	4 (50%+)	4 (50%+)	Not accepted	Not accepted

- Online programmes are presented in English and offered on an online basis only. Applications for these two programmes must be completed via the following website: <https://online.uj.ac.za/> and enquiries must be directed to 0800 980 364 (Toll free) or [enquiries@online.uj.ac.za](mailto:enquiries@online.uj.ac.za).



## Faculty of Engineering and the Built Environment

PROGRAMME	Minimum APS	English	Mathematics / Technical Mathematics	Mathematical Literacy	Physical Science	OR	Technical Science	Geography
<b>DEGREE PROGRAMMES</b>								
<b>Bachelor of Engineering (BEng) Degree (4 years)</b>								
<b>CIVIL ENGINEERING</b>	32	5 (60%+)	5 (60%+)	Not accepted	5 (60%+)	–	Not accepted	Not applicable
<b>ELECTRICAL AND ELECTRONIC ENGINEERING</b>								
<b>MECHANICAL ENGINEERING</b>								
<ul style="list-style-type: none"> <li>• Because of a limited number of places, fulfilling all the minimum entry requirements does not guarantee acceptance into the programme.</li> <li>• Completion of an Engineering Science degree may lead to registration as a Professional Engineer with ECSA, depending on appropriate experience.</li> </ul>								
<b>Bachelor of Engineering Technology (BEngTech) Programmes (3 years)</b>								
<b>CHEMICAL ENGINEERING</b>	30	4 (50%+)	5 (60%+)	Not accepted	5 (60%+)	–	Not accepted	Not applicable
<b>CIVIL ENGINEERING</b>	28	4 (50%+)	5 (60%+)		5 (60%+)	OR	5 (60%+)	
<b>ELECTRICAL ENGINEERING</b>	30	4 (50%+)	5 (60%+)		5 (60%+)	–	Not accepted	
<b>EXTRACTION METALLURGY</b>	30	4 (50%+)	5 (60%+)		5 (60%+)	–	Not accepted	
<b>INDUSTRIAL ENGINEERING</b>	30	4 (50%+)	5 (60%+)		5 (60%+)	OR	5 (60%+)	
<b>MECHANICAL ENGINEERING</b>	30	4 (50%+)	5 (60%+)		5 (60%+)	OR	5 (60%+)	
<b>MINING ENGINEERING</b>	23	4 (50%+)	5 (60%+)		5 (60%+)	OR	5 (60%+)	
<b>PHYSICAL METALLURGY</b>	30	4 (50%+)	5 (60%+)		5 (60%+)	–	Not accepted	
<b>Bachelor of Mine Surveying Degree (3 years)</b>								
<b>MINE SURVEYING</b>	23	4 (50%+)	5 (60%+)	Not accepted	5 (60%+)	OR	5 (60%+)	Not applicable
<b>Bachelor of Science in Construction (BSc) Degree (3 years)</b>								
<b>CONSTRUCTION</b>	30	4 (50%+)	5 (60%+)	Not accepted	5 (60%+)	OR	5 (60%+)	Not applicable
<b>Bachelor of Urban and Regional Planning Degree (3 years)</b>								
<b>URBAN AND REGIONAL PLANNING</b>	27	4 (50%+)	5 (60%+)	Not accepted	Not applicable	–	Not accepted	5 (60%+)
<b>DIPLOMA PROGRAMMES</b>								
<b>Diploma (3 Years)</b>								
<b>MANAGEMENT SERVICES</b>	19 with Mathematics 21 with Maths Lit / Tech Maths	4 (50%+)	3 (40%+)	5 (60%+)	Not applicable	–	Not applicable	Not applicable
<b>OPERATIONS MANAGEMENT</b>	20 with Mathematics 22 with Maths Lit / Tech Maths	4 (50%+)	3 (40%+)	5 (60%+)	Not applicable	–	Not applicable	Not applicable

## Faculty of Engineering and the Built Environment (cont.)

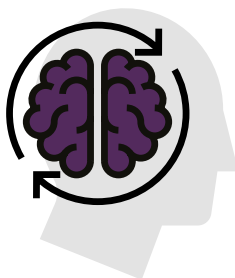
PROGRAMME	Minimum APS	English	Mathematics / Technical Mathematics	Mathematical Literacy	Physical Science	OR	Technical Science
<b>EXTENDED TECHNOLOGY DEGREE PROGRAMMES</b>							
<b>Extended Bachelor of Science (BSc) Degree Programme</b>							
<b>CONSTRUCTION</b>	26	4 (50%+)	5 (60%+)	Not accepted	5 (60%+)	OR	5 (60%+)
<b>Extended Bachelor of Engineering Technology (BEngTech) Degree Programmes</b>							
<b>CIVIL ENGINEERING</b>	26	4 (50%+)	4 (50%+)	Not accepted	4 (50%+)	OR	4 (50%+)
<b>ELECTRICAL ENGINEERING</b>	26	4 (50%+)	5 (60%+)		5 (60%+)		Not accepted
<b>EXTRACTION METALLURGY</b>	22	4 (50%+)	4 (50%+)		4 (50%+)		Not accepted
<b>INDUSTRIAL ENGINEERING</b>	24	4 (50%+)	5 (60%+)		5 (60%+)	OR	5 (60%+)
<b>MECHANICAL ENGINEERING</b>	24	4 (50%+)	5 (60%+)		5 (60%+)	OR	5 (60%+)
<b>PHYSICAL METALLURGY</b>	22	4 (50%+)	4 (50%+)		4 (50%+)		Not accepted
<b>Extended Diploma Programmes</b>							
<b>MANAGEMENT SERVICES</b>	19 with Mathematics 21 with Maths Lit / Tech Maths	4 (50%+)	3 (40%+)	5 (60%+)	Not applicable	-	Not applicable
<b>OPERATIONS MANAGEMENT</b>	20 with Mathematics 22 with Maths Lit / Tech Maths	4 (50%+)	3 (40%+)	5 (60%+)	Not applicable	-	Not applicable

Disclaimer: Due to limited space, fulfilling all minimum entry requirements does not guarantee acceptance into a programme.



## Faculty of Health Sciences

PROGRAMME	Minimum APS	English	Mathematics	Mathematical Literacy	Physical Science	Life Sciences	Technical Mathematics	Technical Science
<b>DEGREE PROGRAMMES</b>								
<b>Bachelor of Biokinetics (4 years)</b>								
<b>BIOKINETICS</b>	32 with Mathematics OR 33 with Mathematical Literacy	5 (60%+)	4 (50%+)	5 (60%+)	Not applicable	Not applicable	Not accepted	Not accepted
<b>Bachelor of Health Science (4 years)</b>								
<b>EMERGENCY MEDICAL CARE (EMC) *</b>	27	5 (60%+)	4 (50%+)	Not accepted	4 (50%+)	4 (50%+)	Not accepted	Not accepted
<b>CHIROPRACTIC COMPLEMENTARY MEDICINE</b>	28	5 (60%+)	4 (50%+)	Not accepted	4 (50%+) OR 4 (50%+)	4 (50%+)	Not accepted	Not accepted
<b>PODIATRY</b>	28	5 (60%+)	4 (50%+)	Not accepted	4 (50%+)	4 (50%+)	Not accepted	Not accepted
<b>MEDICAL LABORATORY SCIENCE</b>	30	5 (60%+)	4 (50%+)	Not accepted	4 (50%+)	5 (60%+)	4 (50%+)	Not accepted
* Applicants must pass both the fitness assessment, phobias evaluation and the medical examination in order to gain entry into the Emergency Medical Care degree programme.								
<b>Bachelor of Environmental Health (4 years)</b>								
<b>ENVIRONMENTAL HEALTH</b>	24	4 (50%+)	4 (50%+)	Not Accepted	4 (50%+)	4 (50%+)	Not accepted	Not accepted
<b>Bachelor Degree (4 years)</b>								
<b>DIAGNOSTIC RADIOGRAPHY DIAGNOSTIC ULTRASOUND NUCLEAR MEDICINE RADIATION THERAPY</b>	31 with Mathematics	5 (60%+)	4 (50%+)	Not accepted	4 (50%+)	5 (60%+)	Not accepted	Not accepted
<b>Bachelor of Nursing (4 years)</b>								
<b>NURSING</b>	30	5 (60%+)	4 (50%+)	Not accepted	4 (50%+)	4 (50%+)	Not accepted	Not accepted
<b>Bachelor of Optometry (4 years)</b>								
<b>B OPTOM</b>	34	5 (60%+)	5 (60%+)	Not accepted	5 (60%+)	5 (60%+)	Not accepted	Not accepted



## Faculty of Health Sciences (cont.)

PROGRAMME	Minimum APS	English	Mathematics	Mathematical Literacy	Physical Science	Life Sciences	Technical Mathematics	Technical Science
<b>BCom Degree (3 years)</b>								
<b>SPORT MANAGEMENT</b>	23 with Mathematics	4 (50%+)	4 (50%+)	Not accepted	Not applicable	Not applicable	Not accepted	Not applicable
<b>Bachelor of Health Science (3 years)</b>								
<b>SPORT AND EXERCISE SCIENCE</b>	27 with Mathematics OR 28 with Mathematical Literacy	5 (60%+)	3 (40%+)	4 (50%+)	Not applicable	4 (50%+)	4 (50%+)	4 (50%+)
<b>DIPLOMA PROGRAMMES</b>								
<b>Diploma (3 years)</b>								
<b>SPORT MANAGEMENT</b>	22 with Mathematics 23 with Mathematics Literacy	3 (40%+)	3 (40%+)	4 (50%+)	Not applicable	Not applicable	3 (40%+)	Not applicable

*Note: The minimum admission requirements for this qualification does not include Physical Science / Technical Science. (Technical Science will be considered if the applicant was enrolled for it as an additional module).*

**Meeting the Faculty's minimum requirements for a particular programme does not necessarily guarantee admission to that programme due to space constraints.**



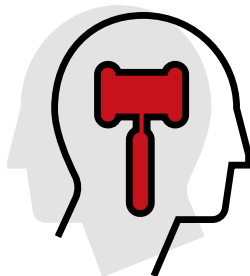
## Faculty of Humanities

PROGRAMME	Minimum APS	English	Mathematics	Mathematical Literacy
<b>DEGREE PROGRAMMES</b>				
<b>Bachelor of Social Work (4 years)</b>				
<b>SOCIAL WORK</b>	31	5 (60%+)	Not applicable	Not applicable
<b>Bachelor of Arts (3 years)</b>				
<b>BA</b>	27	5 (60%+)	Not applicable <i>(Technical Mathematics is not accepted, and the Faculty of Science's minimum requirements for Grade 12 Mathematics (4 (50%+)) for the module registration should be met)</i>	Not applicable
<ul style="list-style-type: none"> <li>The list of subjects that you can choose towards your BA degree can be found on the link below. Please note that the subjects taken outside of the Faculty of Humanities must comply with the entry requirements of the respective home faculties. <a href="https://www.uj.ac.za/faculties/humanities/newBA">https://www.uj.ac.za/faculties/humanities/newBA</a></li> </ul>				
<b>BA with specialisation in LANGUAGE PRACTICE</b>	27	5 (60%+)	Not applicable	Not applicable
<b>BA with specialisation in POLITICS, ECONOMICS AND TECHNOLOGY</b>	27 with Mathematics	5 (60%+)	4 (50%+)	Not applicable
<b>COMMUNITY DEVELOPMENT AND LEADERSHIP</b>	27	5 (60%+)	Not applicable	Not applicable
<b>EXTENDED DEGREE PROGRAMME</b>				
<b>Bachelor of Arts (4 years)</b>				
<b>BA with specialisation in DEVELOPMENT STUDIES</b>	24-26 OR 27	5 (60%+) OR 4 (50%+)	Not applicable	Not applicable
<b>BA with specialisation in LINGUISTICS</b>	24-26 OR 27	5 (60%+) OR 4 (50%+)	Not applicable	Not applicable
<b>BA with specialisation in LINGUISTICS AND LANGUAGE PRACTICE</b>	24-26 OR 27	5 (60%+) OR 4 (50%+)	Not applicable	Not applicable
<b>BA with specialisation in STRATEGIC COMMUNICATION</b>	24-26 OR 27	5 (60%+) OR 4 (50%+)	Not applicable	Not applicable
<ul style="list-style-type: none"> <li>In addition, interviews will be conducted with individual applicants.</li> <li>Note: The APS score in English determines the range of the overall APS score.</li> </ul>				
<b>DIPLOMA PROGRAMME</b>				
<b>Diploma (3 years)</b>				
<b>PUBLIC RELATIONS AND COMMUNICATION</b>	25	5 (60%+)	Not applicable	Not applicable
<b>EXTENDED DIPLOMA PROGRAMME</b>				
<b>Extended Diploma (4 years)</b>				
<b>PUBLIC RELATIONS AND COMMUNICATION</b>	24	4 (50%+)	Not applicable	Not applicable

## Faculty of Law

PROGRAMME	Minimum APS	English	Additional Language	Mathematics	Mathematical Literacy
<b>DEGREE PROGRAMMES</b>					
<b>B degree (3 years)</b>					
<b>BA (LAW)</b>	31 with Mathematics OR 32 with Mathematical Literacy	5 (60%+)	4 (50%+)	3 (40%+)	4 (50%+)
<b>BCOM (LAW)</b>	31 with Mathematics ONLY	5 (60%+)	4 (50%+)	4 (50%+)	Not accepted
<b>B degree (4 years)</b>					
<b>LLB</b>	31 with Mathematics OR 32 with Mathematical Literacy	5 (60%+)	4 (50%+)	3 (40%+)	4 (50%+)

Note: Meeting the Faculty's minimum requirements for a particular programme does not necessarily guarantee admission to that programme due to space constraints.





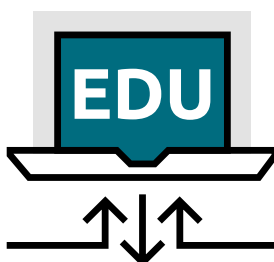
## Faculty of Education

PROGRAMME	Minimum APS	English as a home language	OR	English as a first or second additional language	Mathematics	Mathematical Literacy / Technical Mathematics	
<b>DEGREE PROGRAMMES FOR PRIMARY SCHOOL TEACHING</b>							
<b>BEd degree in Foundation Phase Teaching (4 years)</b>							
<b>FOUNDATION PHASE TEACHING GRADES R-3</b>	28	5 (60%+)	OR	6 (70%+)	3 (40%+)	5 (60%+)	
<b>BEd degree Intermediate Phase Teaching (4 years)</b>							
<b>INTERMEDIATE PHASE TEACHING GRADES 4-7</b>	28	5 (60%+)	OR	6 (70%+)	3 (40%+)	5 (60%+)	
Note: For primary school teaching programmes Technical Mathematics will only be considered if a candidate obtains a level 5 (60%+) or above for Mathematical Literacy.							
<b>DEGREE PROGRAMMES FOR HIGH SCHOOL TEACHING</b>							
<b>BEd degree in Senior Phase and Further Education and Training (Grade 8-12) – LIFE ORIENTATION (4 years)</b>							
<b>PSYCHOLOGY</b>	28	5 (60%+)	OR	6 (70%+)	Not accepted	Not accepted	
PROGRAMME	Minimum APS	English as a home language	OR	English as a first or second additional language	Mathematics	OR	Mathematical Literacy / Technical Mathematics
<b>BEd Degree in Senior Phase and Further Education and Training (Grade 8-12) – COMMERCE EDUCATION</b>							
<b>ACCOUNTING</b>	28	5 (60%+)	OR	6 (70%+)	4 (50%)	OR	Not applicable
<b>BUSINESS MANAGEMENT</b>	28	5 (60%+)	OR	6 (70%+)	4 (50%)	OR	5 (60%)
<b>ECONOMICS</b>	28	5 (60%+)	OR	6 (70%+)	4 (50%)	OR	Not applicable
PROGRAMME	Minimum APS	English	Afrikaans	IsiZulu	Sepedi		
<b>BEd Degree in Senior Phase and Further Education and Training (Grade 8-12) – LANGUAGE EDUCATION</b>							
<b>ENGLISH</b>	28	Home Language 5 (60%+) OR Additional Language 6 (70%+)	Not applicable	Not applicable	Not applicable		
<b>AFRIKAANS</b>	28	Home Language 5 (60%+) OR Additional Language 6 (70%+)	Home Language 4 (50%+) OR Additional Language 5 (60%+)	Not applicable	Not applicable		
<b>ISIZULU</b>	28	Home Language 5 (60%+) OR Additional Language 6 (70%+)	Not applicable	Home Language 4 (50%+) OR Additional Language 5 (60%+)	Not applicable		
<b>SEPEDI</b>	28	Home Language 5 (60%+) OR Additional Language 6 (70%+)	Not applicable	Not applicable	Home Language 4 (50%+) OR Additional Language 5 (60%+)		

*Disclaimer: Due to limited space, meeting all the minimum entry requirements does not guarantee acceptance into a programme.*

## Faculty of Education (cont.)

PROGRAMME	Minimum APS	English as a home language	OR	English as a first or second additional language	Mathematics / Technical Mathematics	OR	Mathematical Literacy	AND/OR	Physical Sciences	OR	Life Sciences	AND	Geography
<b>DEGREE PROGRAMMES FOR HIGH SCHOOL TEACHING (cont.)</b>													
<b>BEd Degree in Senior Phase and Further Education and Training (Grade 8-12) – GEOGRAPHY, LIFE SCIENCES, MATHEMATICS AND PHYSICAL SCIENCES</b>													
<b>GEOGRAPHY</b>	28	5 (60%+)	OR	6 (70%+)	4 (50%+)	OR	6 (70%+)	OR	3 (40%+)	OR	3 (40%+)	AND	3 (40%+)
<b>LIFE SCIENCES</b>	28	5 (60%+)	OR	6 (70%+)	4 (50%+)	OR	6 (70%+)	AND	4 (50%+)	OR	4 (50%+)	-	Not applicable
<b>MATHEMATICS</b>	28	5 (60%+)	OR	6 (70%+)	4 (50%+)	OR	6 (70%+)	-	Not applicable	-	Not applicable	-	Not applicable
<b>PHYSICAL SCIENCE</b>	28	5 (60%+)	OR	6 (70%+)	4 (50%+)	-	Not applicable	AND	4 (50%+)	-	Not applicable	-	Not applicable



PLEASE NOTE:  
**Technical Mathematics**  
**and Technical Science**  
 are not accepted for  
 Degree programmes in  
 the Faculty of Science.

## Faculty of Science

PROGRAMME	Minimum APS	English	Mathematics
-----------	-------------	---------	-------------

### DEGREE PROGRAMME

#### Bachelor of Science in Information Technology (3 years)

<b>INFORMATION TECHNOLOGY COMPUTER SCIENCE AND INFORMATICS</b>	30	5 (60%+)	6 (70%+)
<b>COMPUTER SCIENCE AND INFORMATICS specialising in ARTIFICIAL INTELLIGENCE (AI)</b>	34	5 (60%+)	7 (80%+)

PROGRAMME (Major Subject Combination)**	Minimum APS	English	Mathematics*	Physical Science **	Life Science
---	-------------	---------	--------------	---------------------	--------------

### DEGREE PROGRAMME

#### Bachelor of Science in Life and Environmental Sciences (3 years)

<b>BIOCHEMISTRY AND BOTANY BOTANY AND ZOOLOGY ZOOLOGY AND BIOCHEMISTRY ZOOLOGY AND GEOGRAPHY PHYSIOLOGY AND BIOCHEMISTRY PHYSIOLOGY AND PSYCHOLOGY</b>	30	5 (60%+)	5 (60%+) / 6 (70%+)*	4 (50%+) / 5 (60%+)**	4 (50%+)
<b>BOTANY AND CHEMISTRY ZOOLOGY AND CHEMISTRY</b>	30	5 (60%+)	6 (70%+)	4 (50%+) / 5 (60%+)**	4 (50%+)
<b>ZOOLOGY AND ENVIRONMENTAL MANAGEMENT GEOGRAPHY AND ENVIRONMENTAL MANAGEMENT</b>	30	5 (60%+)	5 (60%+)	4 (50%+)**	4 (50%+)
<b>GEOLOGY AND ENVIRONMENTAL MANAGEMENT GEOLOGY AND GEOGRAPHY</b>	30	5 (60%+)	5 (60%+)	4 (50%+) / 5 (60%+)**	4 (50%+)
<b>ZOOLOGY AND PHYSIOLOGY</b>	30	5 (60%+)	5 (60%+) / 6 (70%)	4 (50%+)	4 (50%+)

\* A minimum rating of 6 for Mathematics if Mathematics 1A is included in the programme.

A minimum rating of 5 for Mathematics if Mathematics 1C is included in the programme.

\*\* A minimum rating of 5 for Physical Science if Chemistry 1A and/or Physics 1A/S1 are included in the programme. A minimum rating of 4 for Physical Science if Chemistry 1C and/or Physics G1/L1 and/or Biology and/or Geology are included in the programme.

\*\*\* You are applying for the degree programme as indicated in the heading of the table. The Faculty reserves the right not to offer all major combinations in a given year depending on student numbers, industry needs and capacity.



## Faculty of Science (cont.)

PROGRAMME (Major Subject Combination)**	Minimum APS	English	Mathematics	Physical Science**
<b>DEGREE PROGRAMMES</b>				
<b>Bachelor of Science in Mathematical Sciences (3 years)</b>				
APPLIED MATHEMATICS AND COMPUTER SCIENCE APPLIED MATHEMATICS AND MATHEMATICAL STATISTICS APPLIED MATHEMATICS AND MATHEMATICS	31	5 (60%+)	6 (70%+)	4 (50%+) / 5 (60%+)**
COMPUTATIONAL SCIENCE	33	5 (60%+)	7 (80%+)	5 (60%+)**
MATHEMATICAL STATISTICS AND COMPUTER SCIENCE MATHEMATICS AND COMPUTER SCIENCE MATHEMATICS AND INFORMATICS MATHEMATICS AND MATHEMATICAL STATISTICS	31	5 (60%+)	6 (70%+)	Not applicable
MATHEMATICS AND PSYCHOLOGY	31	5 (60%+)	6 (70%+)	4 (50%+)
MATHEMATICS AND MATHEMATICAL STATISTICS (with FINANCIAL ORIENTATION) MATHEMATICAL STATISTICS AND ECONOMICS (with FINANCIAL ORIENTATION) MATHEMATICS AND ECONOMICS (with FINANCIAL ORIENTATION)	33	5 (60%+)	6 (70%+)	Not applicable
ACTUARIAL SCIENCES	33	5 (60%+)	7 (80%+)	Not applicable

\*\* A minimum rating of 5 for Physical Science if Chemistry 1A and/or Physics 1A are included in the programme.  
A minimum rating of 4 for Physical Science if Chemistry 1C and/or Physics G1 are included in the programme.

PROGRAMME (Major Subject Combination)**	Minimum APS	English	Mathematics*	Physical Science**	Life Science
<b>DEGREE PROGRAMMES</b>					
<b>Bachelor of Science in Physical Sciences (3 years)</b>					
BIOCHEMISTRY AND CHEMISTRY GEOLOGY AND CHEMISTRY	31	5 (60%+)	6 (70%+)	5 (60%+)	4 (50%+)
CHEMISTRY AND MATHEMATICS CHEMISTRY AND PHYSICS	31	5 (60%+)	6 (70%+)	5 (60%+)	Not applicable
GEOLOGY AND MATHEMATICS GEOLOGY AND PHYSICS	31	5 (60%+)	6 (70%+)	4 (50%+) or 5 (60%+)	Not applicable
PHYSICS AND APPLIED MATHEMATICS PHYSICS AND MATHEMATICS	31	5 (60%+)	6 (70%+)	5 (60%+)	Not applicable

\* A minimum rating of 5 for Mathematics if Mathematics 1A is included in the programme.  
A minimum rating of 4 for Mathematics if Mathematics 1C is included in the programme.

\*\* A minimum rating of 5 for Physical Science if Chemistry 1A and/or Physics 1A/1S are included in the programme.  
A minimum rating of 4 for Physical Science if Geology is included in the programme.

\*\*\* You are applying for the degree programme as indicated in the heading of the table. The Faculty reserves the right not to offer all major combinations in a given year depending on student numbers, industry needs and capacity.

## Faculty of Science (cont.)

PROGRAMME (Major Subject Combination)**	Minimum APS	English	Mathematics*		
<b>EXTENDED DEGREE PROGRAMME</b>					
<b>Bachelor of Science in Information Technology (Extended) Degree</b>					
<b>COMPUTER SCIENCES AND INFORMATICS</b>	26	4 (50%+)	5 (60%+)		
PROGRAMME (Major Subject Combination)**	Minimum APS	English	Mathematics*	Physical Science**	Life Science
<b>EXTENDED DEGREE PROGRAMMES</b>					
<b>Bachelor of Science in Life and Environmental Sciences (Extended)</b>					
<b>BIOCHEMISTRY AND BOTANY</b>	26	4	5	4	4
<b>BOTANY AND CHEMISTRY</b>		(50%+)	(60%+)	(50%+)	(50%+)
<b>BOTANY AND ZOOLOGY</b>					
<b>GEOGRAPHY AND ENVIRONMENTAL MANAGEMENT</b>					
<b>PHYSIOLOGY AND BIOCHEMISTRY</b>					
<b>PHYSIOLOGY AND PSYCHOLOGY</b>					
<b>ZOOLOGY AND BIOCHEMISTRY</b>					
<b>ZOOLOGY AND CHEMISTRY</b>					
<b>ZOOLOGY AND ENVIRONMENTAL MANAGEMENT</b>					
<b>ZOOLOGY AND GEOGRAPHY</b>					
PROGRAMME (Major Subject Combination)**	Minimum APS	English	Mathematics	Physical Science**	
<b>EXTENDED DEGREE PROGRAMMES</b>					
<b>Bachelor of Science in Mathematical Sciences (Extended)</b>					
<b>APPLIED MATHEMATICS AND COMPUTER SCIENCE</b>	26	4	5	4	
<b>APPLIED MATHEMATICS AND MATHEMATICS</b>		(50%+)	(60%+)	(50%+)**	
<b>APPLIED MATHEMATICS AND MATHEMATICAL STATISTICS</b>	26	4	5	Not applicable	
<b>MATHEMATICAL STATISTICS AND COMPUTER SCIENCE</b>		(50%+)	(60%+)		
<b>MATHEMATICS AND COMPUTER SCIENCE</b>					
<b>MATHEMATICS AND INFORMATICS</b>					
<b>MATHEMATICS AND MATHEMATICAL STATISTICS</b>					
<b>MATHEMATICS AND PSYCHOLOGY</b>					



## Faculty of Science (cont.)

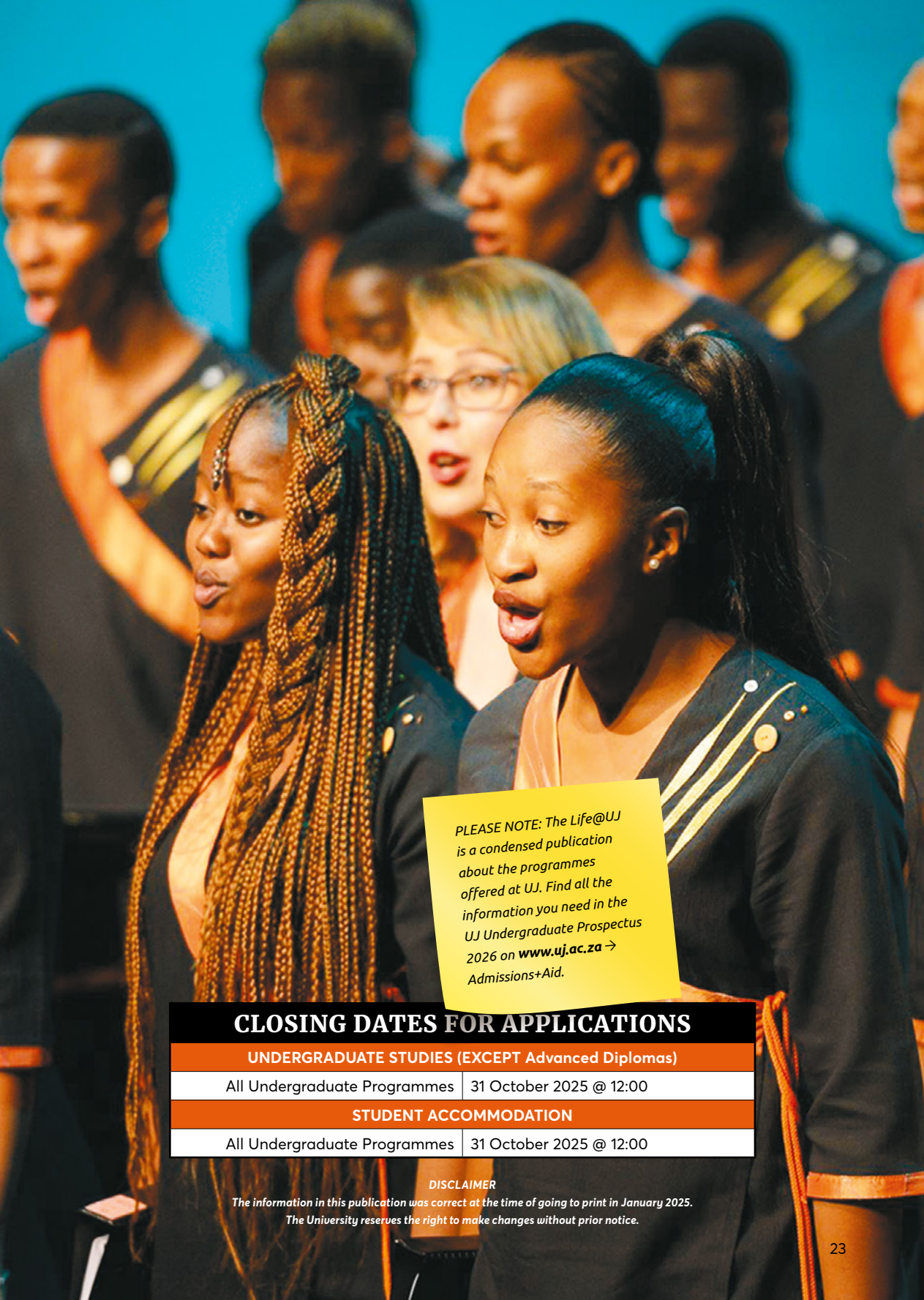
PROGRAMME (Major Subject Combination)**	Minimum APS	English	Mathematics	Physical Science**	Life Science
<b>EXTENDED DEGREE PROGRAMMES</b>					
<b>Bachelor of Science in Physical Sciences (Extended)</b>					
<b>BIOCHEMISTRY AND CHEMISTRY</b>	26	4 (50%+)	5 (60%+)	4 (50%+)**	4 (50%+)
<b>CHEMISTRY AND MATHEMATICS</b> <b>CHEMISTRY AND PHYSICS</b> <b>PHYSICS AND APPLIED MATHEMATICS</b> <b>PHYSICS AND MATHEMATICS</b>	26	4 (50%+)	5 (60%+)	4 (50%+)**	Not applicable

\*\* A minimum rating of 4 for Physical Science is required if Chemistry and/or Physics are included in the programme.

\*\*\* You are applying for the degree programme as indicated in the heading of the table. The Faculty reserves the right not to offer all major combinations in a given year depending on student numbers, industry needs and capacity.

PROGRAMME	Minimum APS	English	Mathematics / Technical Mathematics	Physical Science	Life Science
<b>DIPLOMA PROGRAMMES</b>					
<b>Diploma (Extended)</b>					
<b>ANALYTICAL CHEMISTRY</b>	22	4 (50%+)	3 (40%+)	4 (50%+)	Not applicable
<b>FOOD TECHNOLOGY</b>	22	4 (50%+)	3 (40%+)	3 (40%+)	3 (40%+)
<b>BIOTECHNOLOGY</b>	23	4 (50%+)	3 (40%+)	3 (40%+)	3 (40%+)





PLEASE NOTE: *The Life@UJ* is a condensed publication about the programmes offered at UJ. Find all the information you need in the UJ Undergraduate Prospectus 2026 on [www.uj.ac.za](http://www.uj.ac.za) → Admissions+Aid.

## CLOSING DATES FOR APPLICATIONS

### UNDERGRADUATE STUDIES (EXCEPT Advanced Diplomas)

All Undergraduate Programmes	31 October 2025 @ 12:00
------------------------------	-------------------------

### STUDENT ACCOMMODATION

All Undergraduate Programmes	31 October 2025 @ 12:00
------------------------------	-------------------------

#### DISCLAIMER

The information in this publication was correct at the time of going to print in January 2025. The University reserves the right to make changes without prior notice.

# Faculty Contact Details

## Faculty of Art, Design and Architecture

Telephone: 011 559 1098 / Email: [web-fada@uj.ac.za](mailto:web-fada@uj.ac.za)

## College of Business and Economics

### Auckland Park Kingsway Campus (APK)

Telephone: 011 559 2475 or 011 559 2492 or 011 559 3861

Email: [AskCBE@uj.ac.za](mailto:AskCBE@uj.ac.za) or [Inuku@uj.ac.za](mailto:Inuku@uj.ac.za) or [bobbyk@uj.ac.za](mailto:bobbyk@uj.ac.za)

### Auckland Park Bunting Road Campus (APB)

Telephone: 011 559 1348 or 011 559 1474 / Email: [oupat@uj.ac.za](mailto:oupat@uj.ac.za)

## Soweto Campus (SWC)

Telephone: 011 559 5559 or 011 559 5709

Email: [matebogom@uj.ac.za](mailto:matebogom@uj.ac.za)

## Faculty of Education

Telephone: 011 559 3251 (APK)

Telephone: 011 559 5562 (SWC)

Email: [eduqueries@uj.ac.za](mailto:eduqueries@uj.ac.za)

## Faculty of Engineering and the Built Environment

### Auckland Park Kingsway Campus (APK)

Telephone: 011 559 3565

Email: [web-engineering@uj.ac.za](mailto:web-engineering@uj.ac.za)

### Doornfontein Campus (DFC)

Telephone: 011 559 6811 / Email: [web-engineering@uj.ac.za](mailto:web-engineering@uj.ac.za)

## Faculty of Health Sciences

Telephone: 011 559 6925 / Email: [web-healthscience@uj.ac.za](mailto:web-healthscience@uj.ac.za)

## Faculty of Humanities

Telephone: 011 559 2197 / Email: [humanitiesreceph@uj.ac.za](mailto:humanitiesreceph@uj.ac.za)

## Faculty of Law

Telephone: 011 559 2141 or 011 559 2775

Email: [thokozilem@uj.ac.za](mailto:thokozilem@uj.ac.za)

## Faculty of Science

Telephone: 011 559 4562 or 011 559 6349

Email: [web-science@uj.ac.za](mailto:web-science@uj.ac.za)

## Centre for Psychological Services and

### Career Development (PsyCaD)

Telephone: 011 559 2394 (APK) / 011 559 6042 (DFC)

011 559 5752 (SWC) / 011 559 1318 (APB)

Email: [psycadinfo@uj.ac.za](mailto:psycadinfo@uj.ac.za)

## UJ Call Centre

Telephone: 011 559 4555 / Email: [mylife@uj.ac.za](mailto:mylife@uj.ac.za)

WhatsApp: +27 87 240 6854

[uj.ac.za/imaginethat](http://uj.ac.za/imaginethat)

Scan here to experience  
this publication online

