

HOW TO ACCESS DATABASES WITH A SECURITY CERTIFICATE WARNING

Some databases require a SSL certificate. If the certificate has not been acquired yet, it will show a security warning, but you are still able to access the databases by following the steps below:

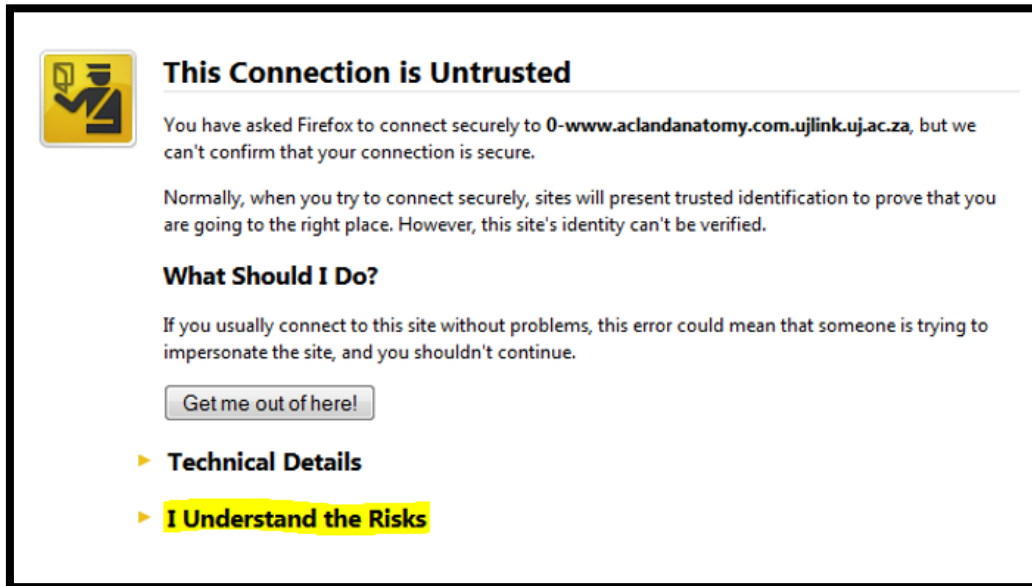
STEP 1

CLICK ON THE LINK, **FOR EXAMPLE:**

<https://0-www.aclandanatomy.com.ujlink.uj.ac.za>

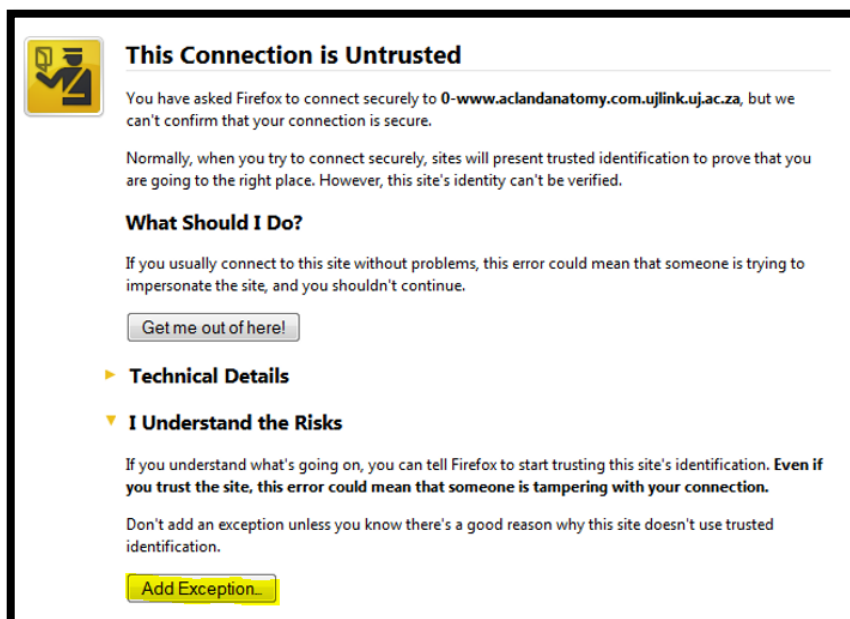
You will get the screen below, click on **"I understand the risks"**

(Note the message might be worded differently on different browsers)



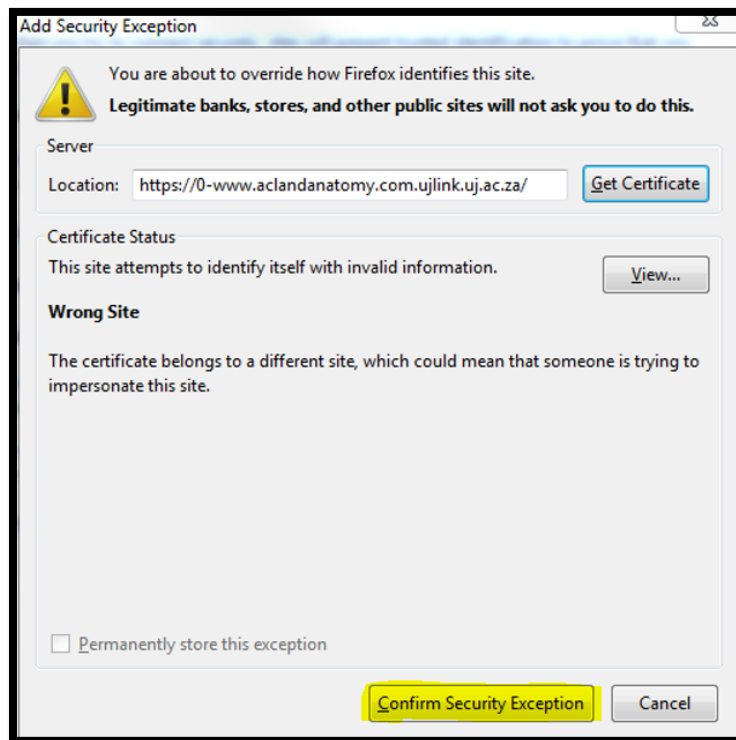
STEP 2

After completing step 1, the following screen will appear. Click on **"Add Exception"** etc.



STEP 3

Once step 2 is successfully completed, the following screen will appear, click on **“Confirm Security Exception”**



STEP 4

If you successfully completed steps 1 to 3 you will be requested to authenticate yourself by entering your details.

UJLINK Breaking Knowledge Boundaries

Authentication Page

You have 2 options to access the Library Services:

A. Library Option: Use your Surname, UJ ID and Library PIN
B. Campus Option: Use your UJ Email Address and Password

*** Supported Browsers: ***
Internet Explorer10, FireFox & Google Chrome (Click here for IE9 fix)

A. Library Option:
[Need Help? - contact [Library Circulation Desk](#)]

B. Campus Option:
[Need Help? - [Students](#) or [Staff](#)]

Surname: _____

UJ Staff/Student Number: _____

Personal Identification Number [PIN]:
Not yet created PIN?
Click on Submit below

By clicking on "Submit", you accept the Terms as stated below.

PIN Instructions

1. You will be prompted to create and enter a PIN in addition to your Surname and UJ Staff/Student Number
2. It is your responsibility to ensure the secrecy of your PIN and to logout to end your session
3. The PIN that you create must be at least 6 characters long [max 30] and be alphanumeric, e.g. 3cats22 or ca4ts1
4. To change your PIN, login to "My UJLink" [Once logged in, enter your current PIN and then create a new PIN]
5. If you can't remember the PIN that you have created, contact the [Circulation Desk](#)

I am a registered UJ:

Student
 Staff member

Student Number or Staff Username
[i.e. 1st part of your UJ E-mail Address]: _____

@student.uj.ac.za / @uj.ac.za

UJ Email Password: _____

By clicking on "Submit", you accept the Terms as stated below.

Once authenticated, you should be able to access the database.

Should you need assistance please contact nmatlawe@uj.ac.za or faithd@uj.ac.za