



the automotive industry and its various fields. Training is practical, allowing the learner to specialise in a particular field.

- Phambili Counseling Division focuses on practical support.
- Auxiliary community projects – Waste not, want not (collection of food, clothes and unwanted goods to the needy).

The Slovo Center of Excellence

This project was established as a resource centre, based on the foundation of a faith-based ministry called the Wayside Sunday School, which reaches out to children who are not able to attend a Sunday school at a church. UJ became involved when a more holistic approach was considered to look at the needs of the community. SCE, operating separately from the WSS ministry, includes the social, physical, intellectual,

24-hour crisis line a beacon of hope

PsyCaD

One of the biggest highlights on UJ's 2009 calendar was definitely the launch of its first 24-hour crisis line, a free service to any member of the UJ population who is in distress or has experienced a trauma.

The crisis line, part of UJ's Centre for Psychological Services and Career Development (PsyCaD) is part of a wide range of professional and confidential services, ranging from therapeutic, psycho-educational and career services. It is manned by a team of 10 intern psychologists. Since its inception in February this year more than 100 students and staff members have received therapeutic interventions and medical assistance.

PsyCaD and RAUCALL (Grade 8 to 12): The focus is on the applying of psychological knowledge, skills and experiences in a professional and ethical manner to an important sphere of RAUCALL learners' everyday life – career development. An estimated 2 800 RAUCALL learners benefited from this project over the last 11 years through the selection process, the subject choice guidance and career counselling.

creative and emotional wellbeing of the children, in addition to their spiritual wellbeing. Some of its main objectives are: an aftercare programme; a health and wellness programme (addressing HIV/Aids and other diseases); and networking with other organisations and stakeholders within the surrounding communities.

Stop Frame Animation Workshop

Sabela Sizwe focuses on programs to give support to the development of the children from the Orlando Industrial area (art classes, language classes, facilitated homework, life skills, excursions to theatre and other places of interest). About 65 HIV/Aids orphans and vulnerable impoverished children who live in shacks and building basements were supported over the last three years. Art work made by these children (unique garments, cards and calendars) are sold to generate money.

Peer Buddies Project

Peer buddies are students who volunteered to PsyCaD with the objective to promote wellness of people, believing that a happy mind leads to a healthy body and a positive future.

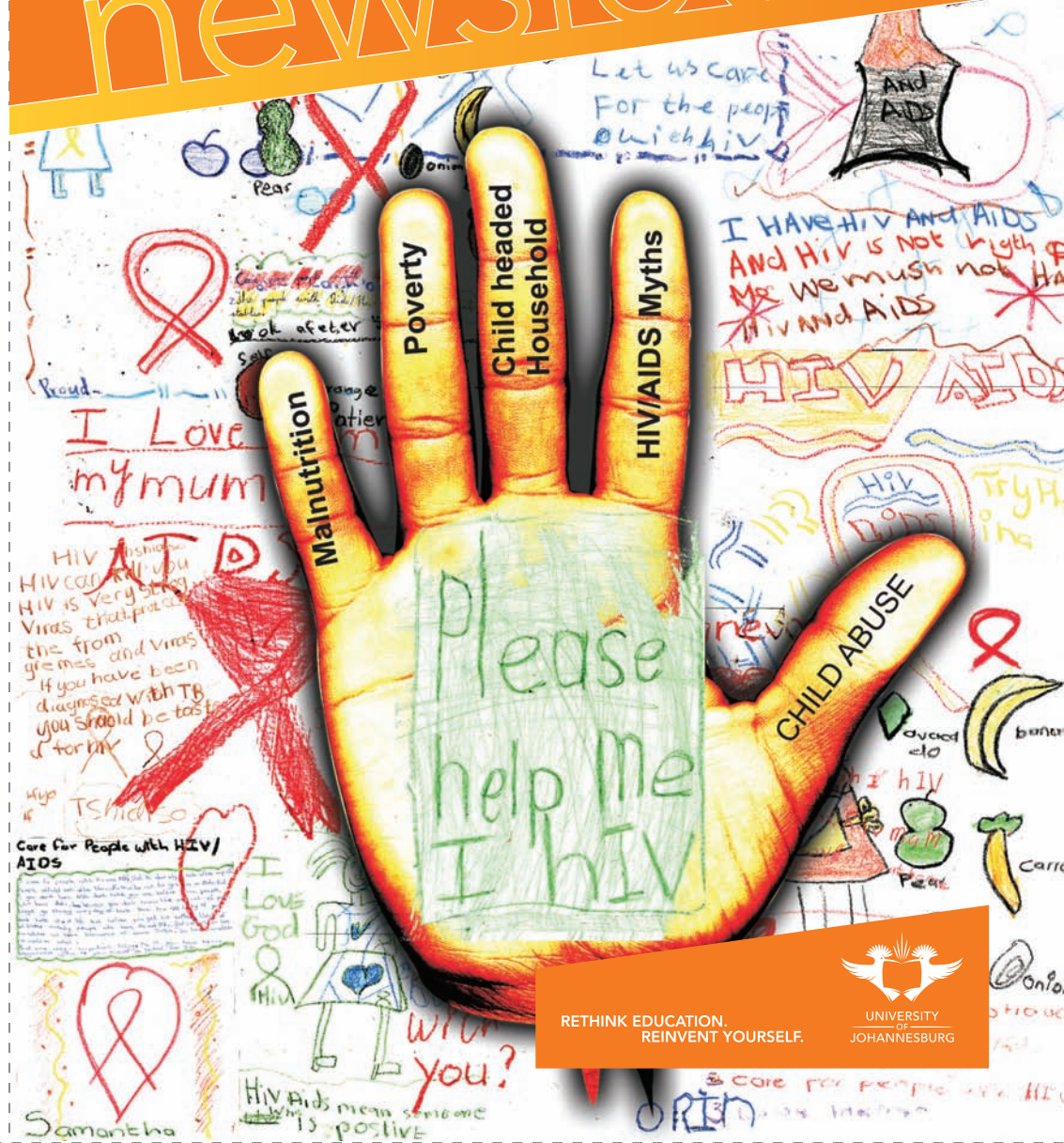
RAUCALL

RAUCALL, established in 1992, is a school community of Crosby. It provides education with a fixed curriculum to learners from disadvantaged communities with the potential to academically succeed in tertiary studies. It has achieved a 100% matriculation pass rate since 1996, its first matriculation class.

UNIVERSITY OF JOHANNESBURG COMMUNITY ENGAGEMENT

No 1 : JANUARY to MARCH 2010

newsletter



RETHINK EDUCATION.
REINVENT YOURSELF.



Remember and Give (RAG)

Millions have been donated to charitable causes since its beginning, showing that it is about people, caring about people, making a difference and being proud about it.

RAG, a registered fundraising organisation driven by UJ students, is the umbrella body that coordinates community service activities, as well as those undertaken by the 13 student houses on the APK campus. Some of the community services undertaken include:

- Educational tours to the Hector Petersen Museum, the Apartheid Museum and Constitution Hill to educate learners about the history of South Africa's apartheid system.
- Awareness programs where learners are taught about the environment and caring for animals – field trips to the Zoo and the Botanical Garden.
- Cancer Awareness Week; Optometry Month (free eye tests);
- Leadership Camps – skills on how to overcome difficult situations.
- Internal community services, like distribution of soya; Christmas parties for the underprivileged; visits to sanctuaries like Cotlands and Mohau Children's Home; helping at soup kitchens; hosting of Senior Citizen's Sports Day and Senior Citizens Picnic.
- Educational and environmental awareness – Excursions for the underprivileged to the Johannesburg Zoo; Planetarium at Wits and the Origin Centre at Wits.
- Leadership camps.

Community Service: Houses (their long term projects)

- **Collections** – More than R500 000 worth of goods were collected and distributed.
- **Afslaan** – Tswelopele, a non-profit organisation with a vision of caring and empowering people.
- **Afslaan/Benjemijn** – Slovo Park Crèche in Coronation (cleaning, painting, creating a play area, putting up security gates and fencing, as well as replacing the ceiling and broken windows).
- **Amper Daar** – Thembaletu is an organisation where food and everyday skills are provided to the street children of Melville. The aim is to improve their literacy, Maths, bead and art work, and sporting skills.
- **Annirand** – Cotlands Children's Home in Turffontein
- **Kanniedood** – Two Cacma baboon, Adoons and Kesie, were adopted and students hold regular fundraisers to supply them with food.
- **Kruinsig** – Guild Cottage, a treatment centre for sexually abused children.

- **Kruinsig/Vorendag** – Renovating and fixing the New Nation School in Vrededorp.
- **Vorendag** – The Coronation Hospital Children's Ward.
- **Skoonveld** – A baby house in Florida and toddler house in Dobsonville.
- **Alomdraai** – Cotlands, a baby sanctuary for abused and abandoned children.
- **Bastion** – Huis Hoëveld Old Age Home.
- **Dromedaris** – Abraham Kriel and Emdeni Children's Home.
- **Lebone** – Villa Lambano, a safe home for orphaned or abandoned babies.
- **Oppierif** – Through their feeding project, in conjunction with the Vergesig congregation, they supplied food to 13 families over 11 months.

Adopt-a-Cop

Crime in South Africa is a concern everywhere, and even campuses are no longer the safe havens they used to be.

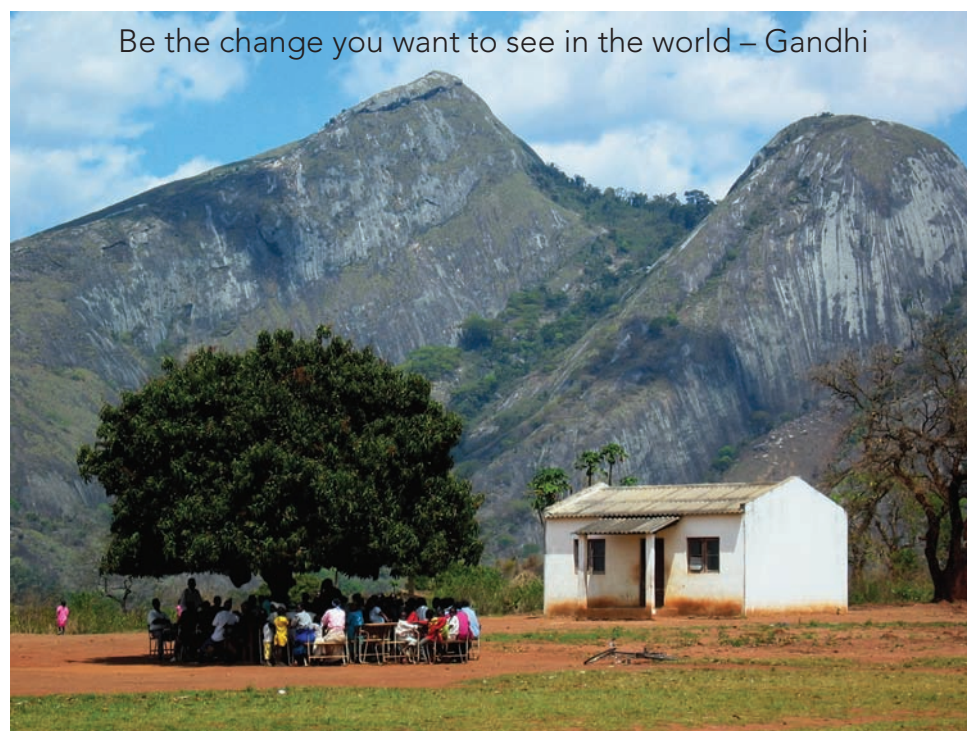
As crime occurs outside rather than inside campuses, it was decided to form an 'Adopt-a-Cop Project where campus security, community, street kids and police are working together. The team includes the Community Engagement society, security control, the Institution for child/adult guidance, ABZ, student community development society, the government and city relations.

The figures says it all

Just to grasp the commitment of the Student Development Society, one only has to look at the UJ Community Engagement Audit.

- A zoo trip on 27 September got 50 UJ students and one staff member involved. An estimated 100 kids benefited from this incentive that had at its core food, education and skills development.
- For the Easter Egg distribution at Helen Joseph Hospital on 20/21 March, 243 patients were reached by 23 students.
- A trip to Cotlands on 12 May to distribute food and clothes got 25 students involved, benefiting 234 people.
- 51 students were part of the outreach to Tembisa to distribute clothes and food, which eventually benefited 432 people.
- Regarding the Crime Project, addressing skills development, from 6 - 9 May, 12 staff members and 50 students reached a whopping 32 456 people. Another 15 stakeholders were involved.
- The Health Awareness week from 9 to 15 May reached 5 600 people and three staff members and 50 UJ students were involved.
- The Children Care Week, starting 27 June, got 56 students and 10 staff members involved, reaching 123 beneficiaries.
- The Career education Project (50 students) reached 200 people; and
- The Chinese Dragon Board (three staff members; 45 students) benefited 98 people.

Be the change you want to see in the world – Gandhi



Events 2010

JANUARY

- 4 Office for Community Engagement (OCE) relocated to DFC
- 20 Community Engagement Advisory Board (CEAB)
- 25 CE Mini CD Calendar distribution

FEBRUARY

- 3 CE Student Training Workshop SWC Campus
- 10 CE Student Training Workshop APB Campus
- 17 CE Student Training Workshop APK Campus
- 22 CE Student Training Workshop DFC Campus

MARCH

- 1 SANVO Volunteers joins the OCE
- 4 & 5 Short Learning Programme in Service Learning Capacity Building
- 8 Community Partners Forum
- 15-26 Art for Aids Programme

Office for Community Engagement at the University of Johannesburg
011 559 6260/6331 or www.uj.ac.za/community



Faculties working hard towards Community Engagement

Faculty of Art, Design and Architecture Fostering creative and professional excellence in art and design

Phumani Paper Project – By reaching out and transferring skills and innovation, Phumani Paper supports the 15 paper making businesses units under its wing to generate income and to fight poverty. They assist these communities to transform biological resources, as well as paper waste, into handmade paper and paper products that can be sold.

Since its inception in 1998, PP has seen significant growth and is currently representing one of the largest active community engagement programmes at UJ.

- Other projects: Soccer Legends logo; Diepsloot Community Project.

Faculty of Economic and Financial Sciences

'Excellence is not a skill; it is an attitude' – Ralph Marston

The Thuthuka Programme is one of UJ's projects to assist in the empowerment and development of students from previously disadvantaged backgrounds – a partnership between SAICA, Fasset and lecturers of the department, as well as various accredited training officers.

Teacher training workshops also fulfill a great need among Economic Management Science teachers, especially regarding economic knowledge, teaching methods and low pass rates resulting in schools dropping EMS as a subject of choice.

- Other projects: Support projects for University of Fort Hare and University of Limpopo; Equity Development Programme and Project 26°.

Faculty of Education

Education has the power to transform human lives

The Faculty of Education adopts a multi-tiered service and support system between students and staff and a number of local schools. It strives to build mutually beneficial relationships with various communities, matching local need with Faculty strengths.

It focuses on 11 school projects, including RAUCALL, 10 service learning sites, and a community organisation in the vicinity of the university. Not only does this involvement out of the classroom make a valuable difference to school communities; it also contributes to the development and preparation of future teachers.

- Examples: Social issues such as HIV/Aids; workshops for learners from partner schools, science on a shoestring, Golden Gate excursion; RAUCALL Mentoring project.

Faculty of Engineering and Built Environment (FEBE)

Positioned to become a leading technology hub in Africa

FEBE engages on many fronts with the national and international community through projects and professional affiliations, eg through joint ventures with Group 5; Formula One in Schools Project, and its Technology Transfer Project.



clinic has developed over the years – rendering free legal services, coupled with the training of law students in a clinical environment dealing with real clients. Today specific communities with specific needs are served by final year LLB students – 202 in 2009 – under the supervision of four attorneys. It is regarded as one of the most advanced South African models, providing inspiration to others.

Faculty of Management

Difficult circumstances and problems must be converted into challenges

As one of the biggest faculties (10 departments over the four campuses), this is also one of the faculties spreading its wings most regarding community engagement. Its flagship – the Students in Free Enterprise (Entrepreneurship Department). SIFE, an international organisation established in 1975, improves the living standards of the needy throughout the world. They develop community outreach projects that equip others with the knowledge and skills to achieve greater economic success. The focus is on teaching the principles of market economics, success, entrepreneurship, financial literacy, business ethics and environmental sustainability. The following projects/organisations have been targeted:

- Siyampambili Schools Project – 15 schools in Soweto grow calendula flowers for its oils. The petals are used for colours in painting.
- The Manica Land Bakery Project – Students worked in Manica, Mozambique to assist the community with a bakery. They imparted critical entrepreneurial skills to the community and the project is currently making profits. Although the

project has ended, UJ is still actively involved in Manica.

- Sir Elton John Foundation in Eldorado Park – Three projects are currently running: a bakery; bead work and fashion designing.
- Abraham Kriel Children's Home – orphans are trained to become independent upon leaving Abraham Kriel by engaging in arts to generate income.

Faculty of Science

Reflecting and thereafter dealing with the problem

This faculty is widely involved in community outreach programmes ranging from HIV education to teaching baking skills to families from disadvantaged communities. There are also academically directed initiatives, for example teaching Mathematics to educators. Various projects have this year created a lot of excitement in the Science Faculty – the Scientiae@UJ, Wisblitz, the Parks Alive Project and the baking course for women in Soweto. Not to mention its Scientele Project that makes its laboratory facilities at the Doornfontein and Kingsway Campus available to grade 11 and 12 learners from disadvantaged schools, with lecturers standing by to provide learners with tuition – free of charge.

To move forward, one must look back and think of those left behind and help them to move ahead



After failing to source high potential students from schools in Soweto, Group 5 became involved at Metropolitan RAUCALL. It identified the lack in skilled engineers from disadvantaged backgrounds as a serious problem to their industry, mostly because they cannot afford the high tuition fees. The programme, now in its fifth year, includes workshops that are held at a regular basis at the Techno-lab for gifted learners from RAUCALL.

- Other outreaches: Formula One (the manufacture of miniature Formula 1 cars by school learners); techno-lab (workshops to school learners) and the Metal casting technology station (technical assistance provided to local foundries and small and medium enterprises (SME's) as part of the MCTS activities).

Faculty of Health Sciences

Dedicated to care and wellness

More than 20 000 patients per year are seen by students in clinics where the focus is on free and subsidised screening.

- Operation Bright Sight focuses on informal settlements where the department carries out eye examinations on patients, using senior students and qualified optometrist supervisors. Not only does it expose students to a broader base of patients; it also helps those in need. Sometimes as many as 200 patients are seen.
- Nursing and Optometry's Phelophepa Train takes students to rural areas to provide free community service, while third year students visit the Helen Joseph Hospital Breast Cancer Unit regularly to conduct reflexology treatment on patients.

- The Chiropractic students offer free health services to detect spinal abnormalities – 700 learners at a primary school in Doornfontein were screened by students.

Faculty of Humanities

Striving for excellence in research and teaching, while promoting human well-being

- One of the biggest success stories, the Kopanang Women's Empowerment Project, focuses on the development of life skills. This group of 50 women generates income with personal artwork/handmade products to support their families. Kopanang means gathering together, building bridges.
- Its psychosocial rehabilitation program for psychiatric patients provides life skills training for mentally ill patients.
- They have also established a school counseling referral system; and
- The educator capacity building helps teachers to deal with dysfunctional learner behavior associated with low self esteem.
- Support group – Eldorado Park Women's Forum's shelter for abused women.

Faculty of Law

Learning from the past to build on the future.

One of UJ's biggest successes, is its Law Clinic, which boasts three operational law clinics – Doornfontein Campus, Kingsway Campus and the Central Divorce Court in Johannesburg. Opening its doors to the public in 1981 with 18 students, the



Community Partners — Taking hands to make the world a better place —

Whether it be art, music, trauma, transformation and development, HIV/Aids or poverty, by forming partnerships with people and organisations outside its borders, UJ is spreading its Community Engagement wings.

Art for Aids International

UJ and Art for Aids International are working together to raise awareness about HIV/Aids through art workshops. This art is then exhibited to generate funds, which are ploughed back to support African projects. The aim is to educate students about the causes and spread of HIV/Aids, and to relieve the suffering of those affected by the pandemic.

ABZ Foundation (Doornfontein Campus)

It started with two young men being inspired by the graffiti – God bless the bridge – on the Joe Slovo Bridge in Doornfontein. From the community work to help the few street children who lived under that bridge grew the exciting Music Academy project to help these kids to find self-worth through music.

Its founders believe that one recorder can change a child's life, becoming a sense of hope, an encouragement.

In Sebokeng teenagers are trained to read music and its Johannesburg CBD Academy attracts 30 kids from five to 14. They don't just play Western instruments, but also learn to play indigenous Stone Age instruments. These handmade instruments are housed in little bags – made by another group under the ABZ umbrella – from recycled plastic.

Leigh Matthews Stress and Trauma Centre

Leigh Matthews was kidnapped the day after she turned 21 and later brutally murdered. Wanting to make a difference, her parents Rob and Sharon, opened The Leigh Matthews Stress and Trauma Centre at the Metropolitan RAUCALL School in Crosby in 2005. Another two branches were later open; in Windsor and at the Soweto Campus. It addresses the need for counseling services after life-changing incidents, including individual counseling and training in various counseling fields.

The Centre for Transformation and Development (CTD)

The CTD was established in 2005 as a skills development centre for the community. A holistic approach to training (accredited with the London Chamber of Commerce and Industry) and upliftment is followed.

- Tswarananag Counseling Training Centre at RAUCALL (focusing on the SAPD and their families).
- Nouvelle Beaute – natural health and wellness, hair, beauty, teaching and training, holistic and alternative therapies. Practical in nature, it is inclusive of learners with special needs/impairments.
- Life Skills Academy (focusing on people living in a traumatised society, caused by a lack of basic skills and unemployment).
- Sinthemba 'Auto-Motive' (We have hope) empowers the individual (including those with special needs/impairments) with an interest in